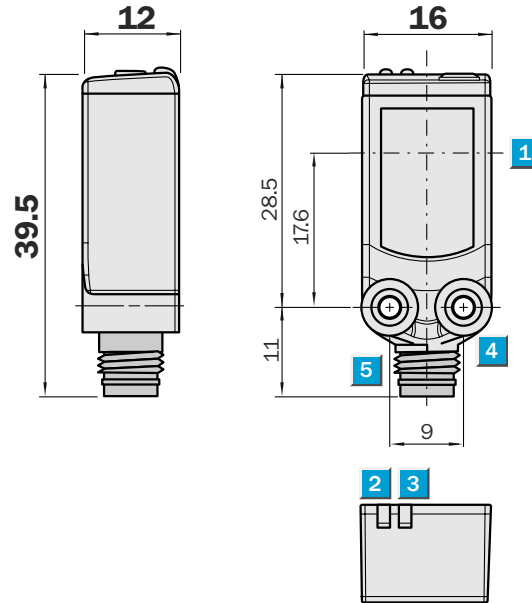


**Scanning range**  
0 ... 5.5 m

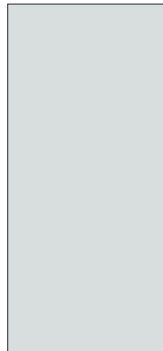
Through-beam photoelectric switch

- Fast and safe alignment through high visibility light spot
- Fast commissioning. Connect, align, ready!
- Easy assembly in slots and guide rails

Dimensional drawing



Adjustments possible

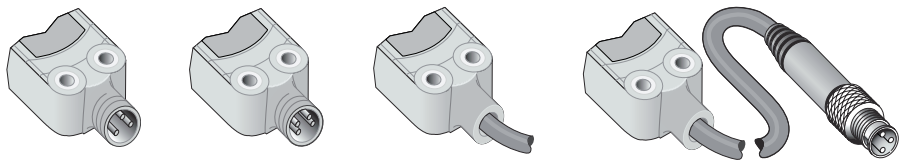


- 1 Centre of optical axis
- 2 LED signal strength indicator orange: status of received light beam
- 3 LED signal strength indicator green: power on
- 4 Mounting hole M3
- 5 Connector

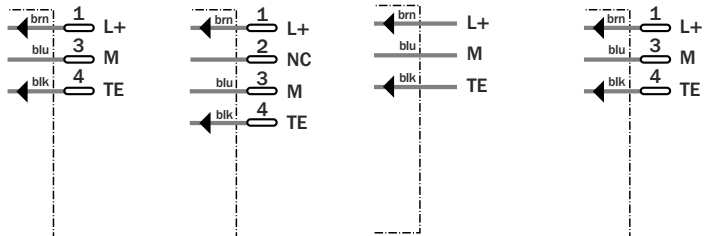


Connection type

WSE4-3N2130	WSE4-3P2230	WSE4-3N1330	WSE4-3P3130
WSE4-3P2130		WSE4-3P1330	
		WSE4-3P1330	

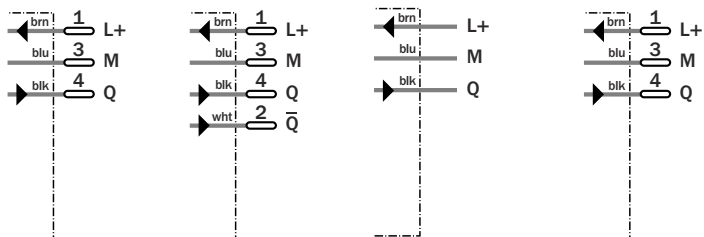


Sender M8, 3-pin M8, 4-pin 3 x 0.14 mm<sup>2</sup> M8, 3-pin



See Accessories chapter  
Mounting systems

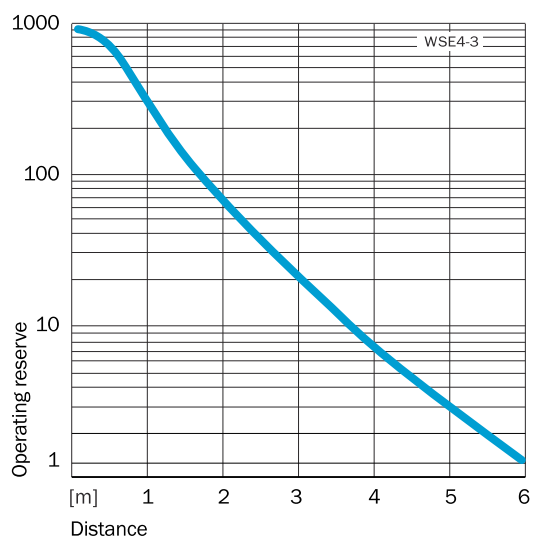
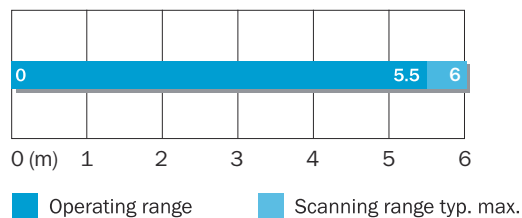
Receiver M8, 3-pin M8, 4-pin 3 x 0.14 mm<sup>2</sup> M8, 3-pin



WSE4-3		N1330	N2130	P1330	P1330	P2130	P2230	P3130			
<b>Scanning range typ. max.</b>	0 ... 5.5 m										
<b>Scanning range, recommended</b>	0 ... 6 m										
<b>Light source, light type</b>	Pin Point LED, red light, 650 nm <sup>1)</sup>										
<b>Supply voltage V<sub>s</sub></b>	DC 10 ... 30 V <sup>2)</sup>										
Ripple	≤ 5 V <sub>ss</sub> <sup>3)</sup>										
Power consumption, sender	≤ 20 mA										
Power consumption, receiver	≤ 20 mA										
<b>Switching outputs</b>	NPN, Q										
	PNP, Q										
	PNP										
Switching mode	Light-switching										
	Complementary										
Output current I <sub>a</sub> max	≤ 100 mA										
Response time	> 0.5 ms <sup>4)</sup>										
Switching frequency	1,000 Hz <sup>5)</sup>										
<b>Connection type</b>	Cable, 2 m <sup>6)</sup>										
	Connector, M8, 3-pin <sup>6)</sup>										
	Cable, 5 m <sup>6)</sup>										
	Connector, M8, 4-pin										
	Cable with plug, M8, 3-pin, 100 mm <sup>6)</sup>										
<b>Circuit protection</b>	V <sub>s</sub> connections reverse-polarity protected / Output Q and Q not short-circuit protected / Interference suppression										
<b>Enclosure rating</b>	IP 66, IP 67										
<b>Ambient temperature operation</b>	-40 °C ... +60 °C										
<b>Ambient temperature storage</b>	-40 °C ... +70 °C										
<b>Weight</b>	Ca. 40 g										
<b>Housing material</b>	Bayblend, PMMA										

<sup>1)</sup> Average service life 100,000 h at T<sub>a</sub> = +25 °C  
<sup>2)</sup> Limit values, reverse-polarity protected  
<sup>3)</sup> operation in short-circuit protected network max. 8 A  
<sup>4)</sup> May not exceed or fall short of  
<sup>5)</sup> V<sub>s</sub> tolerances  
<sup>6)</sup> Signal transit time with resistive load  
<sup>7)</sup> With light/dark ratio 1:1  
<sup>8)</sup> Do not bend below 0 °C

**Scanning range and operating reserve**



Ordering information	
Model Name	Part Number
WSE4-3N1330	1 028 164
WSE4-3N2130	1 028 167
WSE4-3P1330	1 028 159
WSE4-3P1330	1 029 645
WSE4-3P2130	1 028 163
WSE4-3P2230	1 028 160
WSE4-3P3130	1 028 161