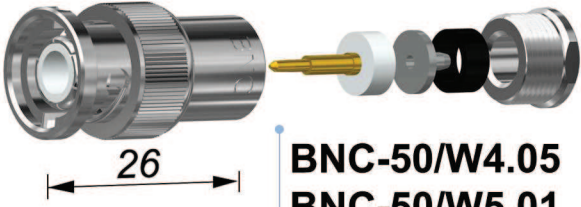


BNC-50/W2.04



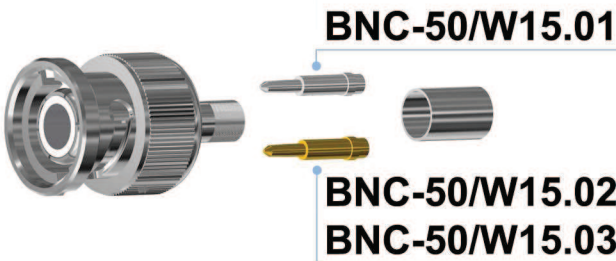
BNC-50/W3



BNC-50/W4.05
BNC-50/W5.01



BNC/NC1



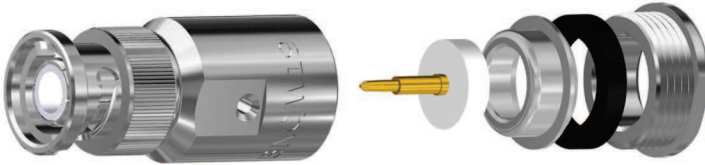
BNC-50/W15.01

BNC-50/W15.02
BNC-50/W15.03



BNC-50/W0

obciążenie 50Ω



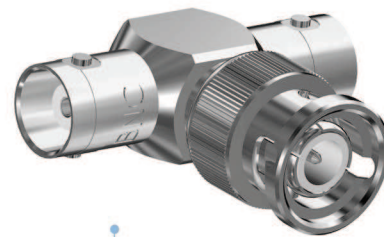
BNC-50/W19.01



BNC-50/WW1.02

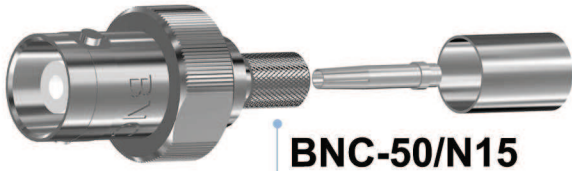


BNC-50/W1.02

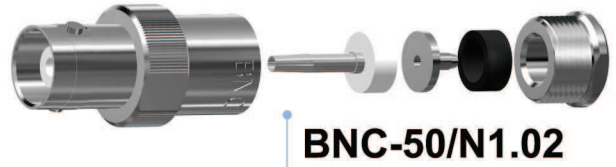


BNC-50/NWN2.02

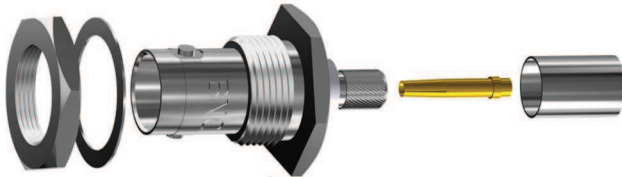
Symbol BNC	Nr katalogowy	Przewód	Korpus	Pin	Isolator	Uwagi	Impedancja			
BNC-50/W2.04	301 102 044	RG58	Niklowany	Złocony	Noryl	Wtyk prosty	50 Ω			
BNC-50/W4.05	301 104 050									
BNC-50/W5.01	301 105 001									
BNC-50/W15.01	301 115 001	RG58		Srebrzony	Teflon					
BNC-50/W15.02	301 115 002	RG58		Złocony						
BNC-50/W15.03	301 115 003	H155		Złocony						
BNC-50/W19.01	301 120 001	CNT400		Srebrzony	Noryl			Wtyk kątowy		
BNC-50/W1.02	301 101 014	RG58						Redukcja BNC/RCA		
BNC/NC-1	350 103 001	-		Tworzywo	-			-	Terminator 50Ω	-
BNC-50/W0	750 028 010								Łącznik	
BNC-50/WW1.02	301 181 020		Trójnik							
BNC-50/NWN2.02	301 185 003									
BNC-50/W3	301 103 011					Pokrywka-zaśleпка				



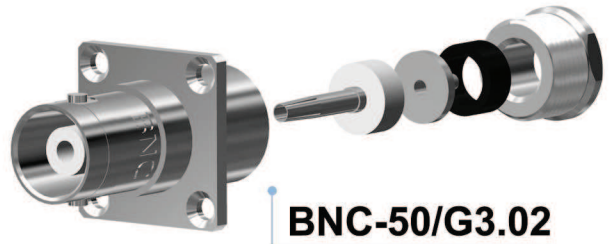
BNC-50/N15



BNC-50/N1.02



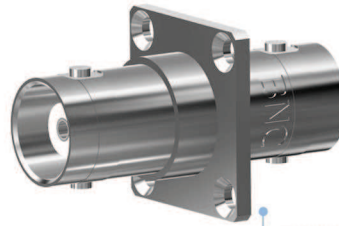
BNC-50/G10.04



BNC-50/G3.02



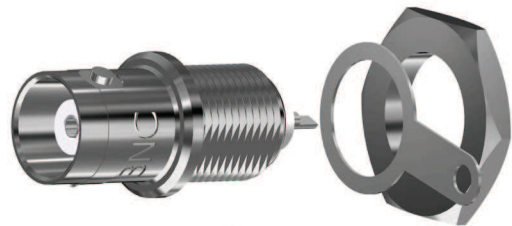
BNC-50/NN1.02



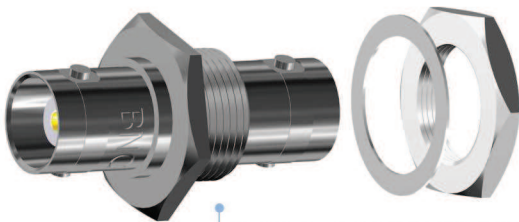
BNC-50/GG1.02



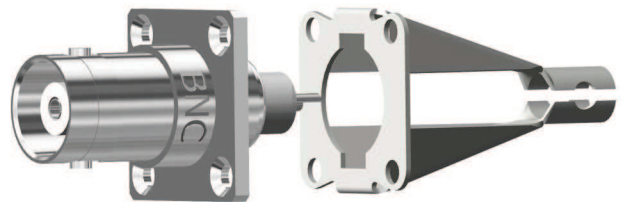
BNC-50/N3



BNC-50/G1.05

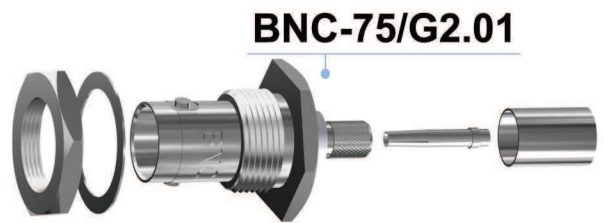
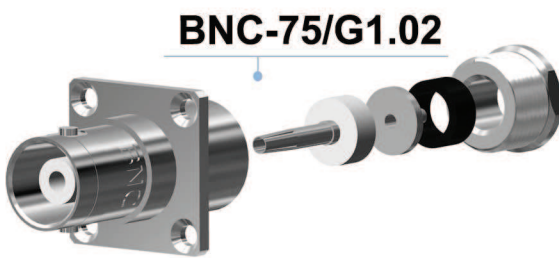
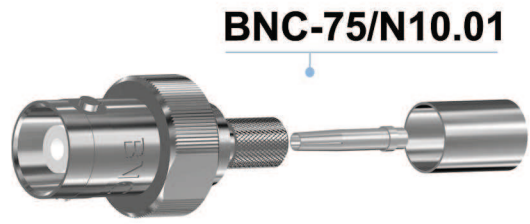
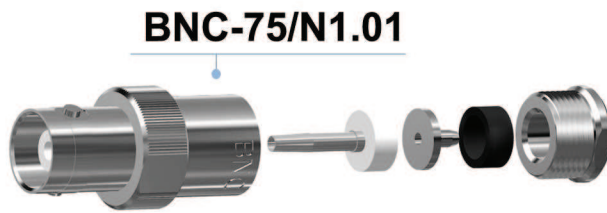
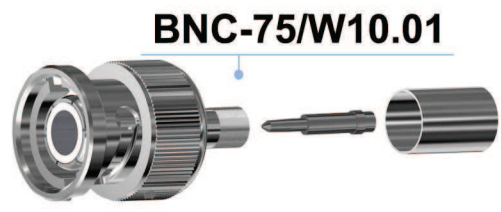
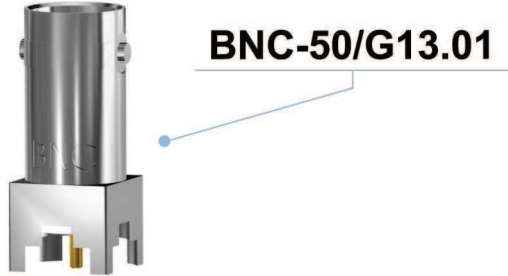
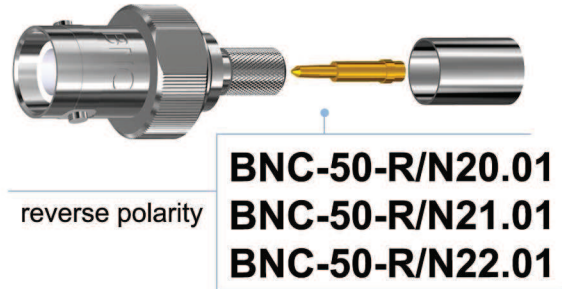
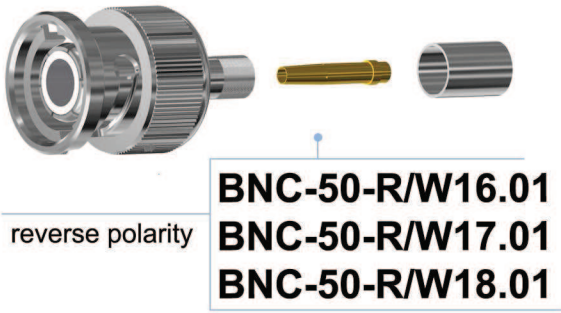


BNC-50/GG2.01



BNC-50/G2.02

Symbol BNC	Nr katalogowy	Przewód	Korpus	Pin	Izolator	Otwór montażowy- typ	Impedancja
BNC-50/N15	301 151 001	RG58	Niklowany	Srebrzony	Noryl	-	50 Ω
BNC-50/G10.04	301 170 040			Złocony	Teflon	B	
BNC-50/NN1.02	301 182 020	-		Srebrzony	-		
BNC-50/N3	301 143 012			-	Pokrywka – zaślepka		
BNC-50/GG2.01	301 186 001	RG58		Złocony	Teflon	K	
BNC-50/N1.02	301 141 020			Srebrzony	Noryl	-	
BNC-50/G3.02	301 163 014	Teflon			A		
BNC-50/GG1.02	301 183 002	RG58		Noryl	C		
BNC-50/G1.05	301 161 050			Teflon	A		
BNC-50/G2.02	301 162 020			Teflon	A		



Symbol BNC	Nr katalogowy	Przewód	Korpus	Pin	Izolator	Otwór montażowy- typ	Impedancja		
BNC-50-R/W16.01	301 116 001	H155	Niklowany	Złocony	Teflon	-	50 Ω		
BNC-50-R/W17.01	301 117 001	RG58							
BNC-50-R/W18.01	301 118 001	RF240							
BNC-50-R/N20.01	301 115 001	H155				Srebrzony		Teflon	A
BNC-50-R/N21.01	301 116 001	RG58							
BNC-50-R/N22.01	301 117 001	RF240							
BNC-50/G13.01	301 173 001	-				PCB			
BNC-75/W1.04	301 201 040	RG59	Niklowany	Złocony	Teflon	-	75 Ω		
BNC-75/W10.01	301 210 001								
BNC-75/N1.01	301 241 012								
BNC-75/N10.01	301 250 001					Srebrzony		Teflon	A
BNC-75/G1.02	301 261 020								
BNC-75/G2.01	301 262 001								
						B			