

TMR 48 analog timers

→ TMR 48

- Multi-function or mono-function
- Multi-range from 0.02 s to 300 h
- Multi-voltage 12 to 240 VDC / 24 to 240 V AC
- Time setting displayed on dial
- 2 changeover relays 5 A / 250 VAC
- Display of power and output states by 2 LEDs
- Housing 48 x 48 mm



Specifications

Type	Functions	Relay outputs	Max. breaking current	Supply voltage	Connection	Part Number
TMR 48 U	A, B, C, W, G, Ac, Bw	2 timed changeover	5 A / 250 VAC	12 → 240 VDC 24 → 240 VAC	Plug-in 11 pin	88 886 016
TMR 48 A	A	2 timed changeover	5 A / 250 VAC	12 → 240 VDC 24 → 240 VAC	Plug-in 8 pin	88 886 106
TMR 48 X	A1, A2, H1, H2, Q1, Q2, D-Di	2 changeover or 1 timed and 1 instantaneous	5 A / 250 VAC	12 → 240 VDC 24 → 240 VAC	Plug-in 8 pin	88 886 116
TMR 48 L	L, Li, G, Gi	2 timed changeover	5 A / 250 VAC	12 → 240 VDC 24 → 240 VAC	Plug-in 11 pin	88 886 516

Accessories

Accessories	Part Number	Part Number	Part Number
11-pin connector base	SA11NN	S11	25 622 080
8-pin connector base	SA8NN	S08	25 622 130
Spring clips (packet of 2)	[For use with socket part numbers 25 622 808 and 25 622 130 only]		79 237 740
face plate or housing in black, gray, or other color	consult us		

General characteristics

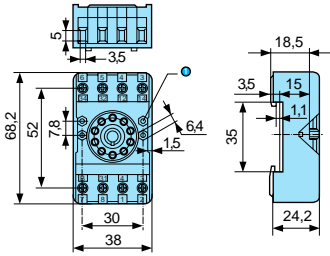
Supply voltage Un	12 → 240 VDC 24 → 240 V AC
Operating range	± 10 % DC supply - 15 % / + 10 % AC supply
Frequency	50 / 60 Hz
Power consumption	4.8 VA / 230 VAC 2.5 VA / 110 VAC 1.1 VA / 24 VAC 0.5 W / 24 VDC 0.8 W / 12 VDC
Timing ranges (14 available options)	0,02 → 1,2 s 0,2 → 12 min. 0,2 → 12 h 0,05 → 3 s 0,5 → 30 min. 0,5 → 30 h 0,2 → 12 s 2 → 120 min. 2 → 120 h 0,5 → 30 s 5 → 300 min. 5 → 300 h 2 → 120 s 5 → 300 s
Repetition accuracy	± 0.5 % of full scale at 25°C (typical with constant parameters)
Temperature drift according to CEI/EN 61812	± 0.05 % of full scale
Display accuracy	± 5 % of full scale at 25°C
Minimum pulse duration START	25 ms
Minimum pulse duration GATE	60 ms
Minimum pulse duration RESET	60 ms
	50 ms
Output specification	
Nominal rating	2 x 5 A
Nominal insulation voltage	250 VAC
Rated power (resistive load)	2000 VA
Minimum current	10 mA
Electrical life at I max. 250 V AC resistive (number of operations)	10 ⁹
Mechanical life (operations)	30 x 10 ⁶
Function and use	
Display of output state by 2 LEDs	Green : power ON, flashing during timing Yellow : ON output ON, OFF output OFF
Operating temperature range (°C)	-20 → +55
Storage temperature range (°C)	-40 → +70
Breakdown voltage	2 KV
Protection class (IEC 60529) - Panel-mounted	IP 50
Protection class (IEC 60529) - Casing	IP 40
Material housing	self-extinguishing
Weight (g)	140

Products and specifications subject to change without notice.

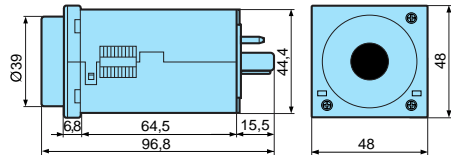
Order/Technical Support – Tel: (800) 677-5311 / FAX: (800) 677-3865 / www.crouzet-usa.com

Dimensions

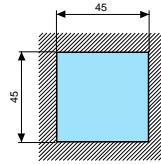
35 mm DIN rail base with clips 79 237 739



TMR 48 U / A / X / L

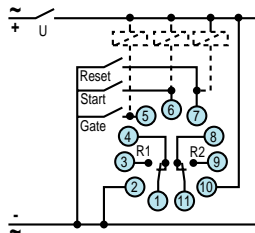


Panel cut-out

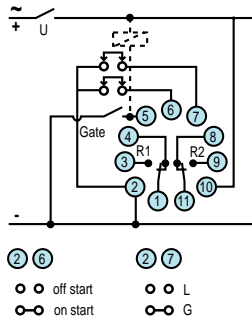


Connections

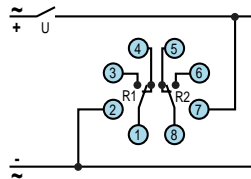
TMR 48 U



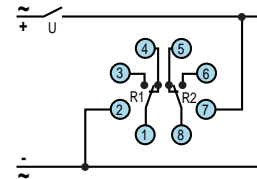
TMR 48 L



TMR 48 A



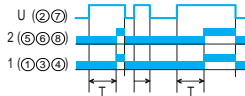
TMR 48 X



Time Function Curves

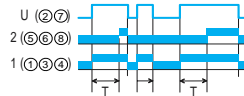
Function A (TMR 48 A)

Delay on make (delay on energisation)



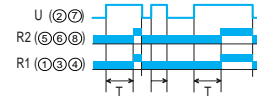
Function A1

Delay on make (delay on energisation)



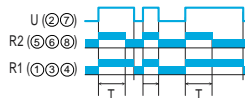
Function A2

Delay on make (delay on energisation)



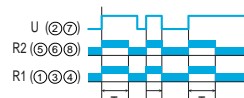
Function H1

Timing on energisation - interval



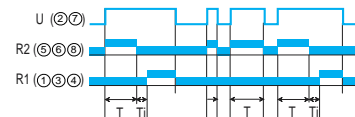
Function H2

Timing on energisation - interval



Function Q1

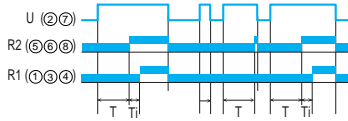
Star-delta



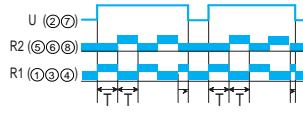
Products and specifications subject to change without notice.

Order/Technical Support – Tel: (800) 677-5311 / FAX: (800) 677-3865 / www.crouzet-usa.com

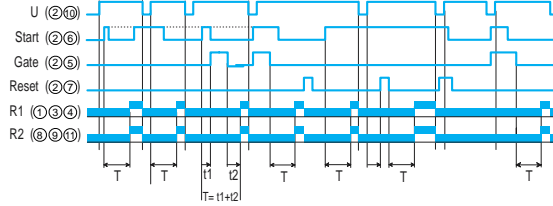
**Function Q2
Star-delta 2**



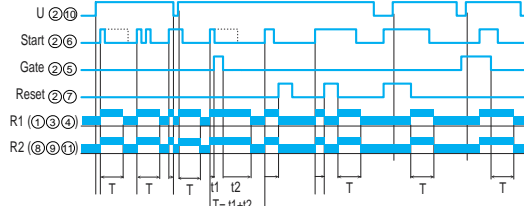
**Function D-Di
Cyclic timing : repeat cycle : symetric recycler**



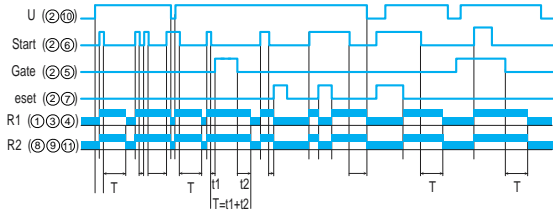
**Function A (TMR 48 U)
Delay on make (delay on energisation)**



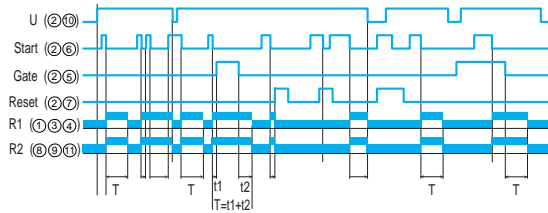
**Function B
Timing on impulse : single shot**



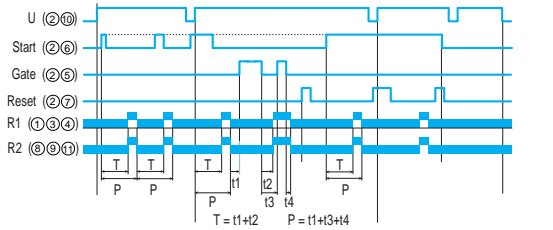
**Function C
Timing after impulse - Delay on break - Delay off w/ constant supply**



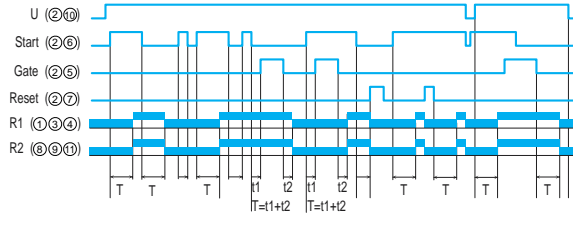
**Function W
Timing after impulse on control contact**



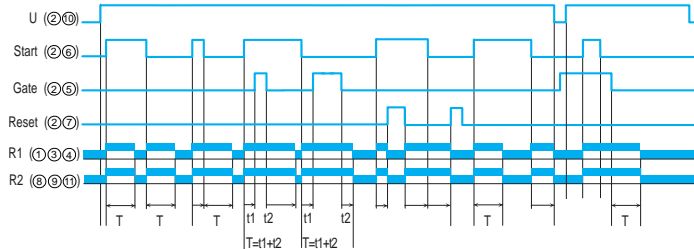
**Function G
Cyclic function**



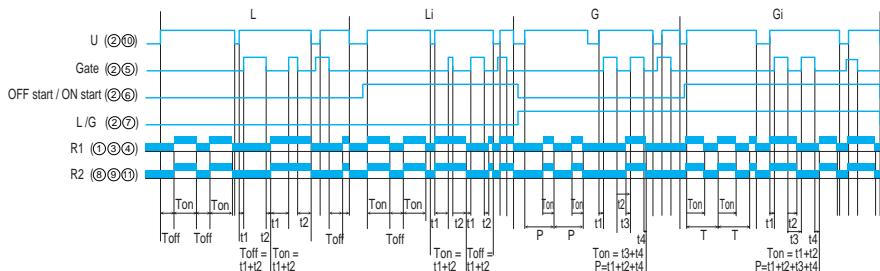
**Function Ac
Timing after closing and opening of control contact**



**Function Bw
Pulse output (adjustable)**



**Function L/Li - G/Gi
Cyclic timing : asymetrical recycler**



Products and specifications subject to change without notice.

Order/Technical Support – Tel: (800) 577-5311 / FAX: (800) 677-3865 / www.crouzet-usa.com