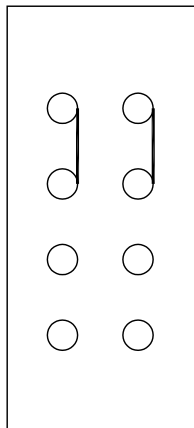
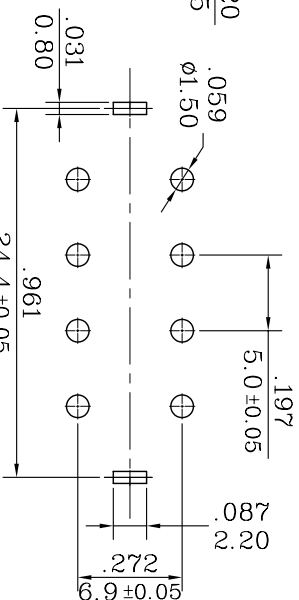
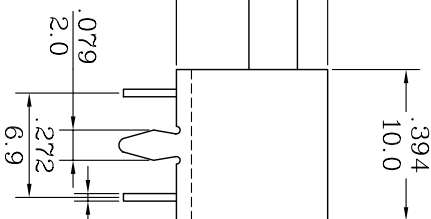
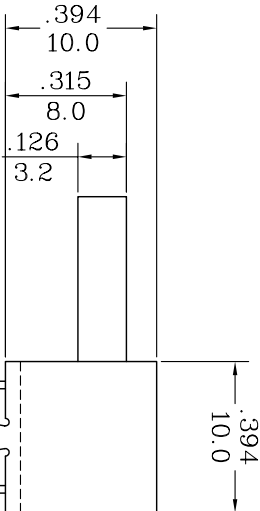
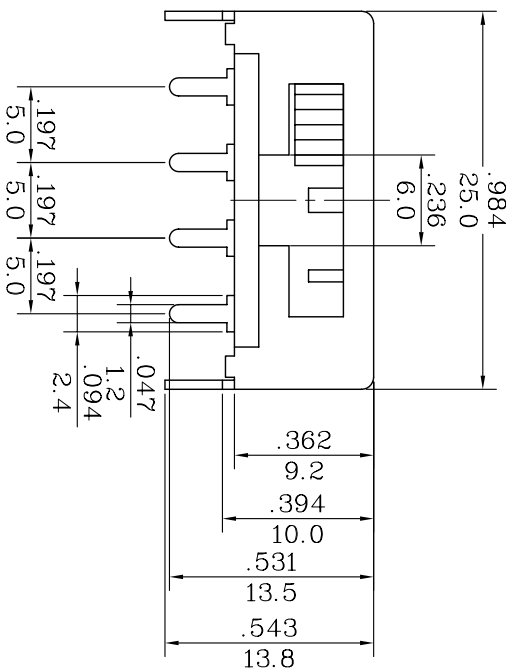


**SCHEMATIC DIAGRAM**



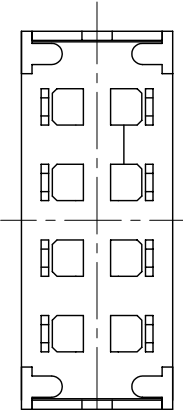
SLIDE SWITCH: MODEL SL13  
 RATING: 1A 125VDC  
 CIRCUIT: DOUBLE POLES TRIPLE THROW  
 CONTACT RESISTANCE: 20mΩ (MAX)  
 DIELECTRIC STRENGTH: 1000VAC FOR 1 MINUTE  
 CYCLE: 100,000.  
 OPERATION FORCE: 300±200g



**P.C. BOARD HOLE**



NOTE: TOLERANCES UNLESS OTHERWISE SPECIFIED:  $\pm \frac{.12}{0.3}$  (in/mm)



修正 REVISION	說明 DESCRIPTION	核准 APPROVAL BY	公差 TOLERANCES	設計 DESIGNED BY	比例尺 SCALE	單位 DIMENSION UNIT	版次 VER	處理 FINISH
			.XX±0.05	馮紅崗	2:1	mm	*	
			繪圖 DRAWN BY	馮紅崗	日期 DATE	品名 TITLE		
			核對 CHECKED BY	核對	2003.03.05	SL13-213C		
				核准 APPROVED BY		圖號 DRAWING NO		
						圖號 DRAWING NO		
						圖號 DRAWING NO		
						圖號 DRAWING NO		