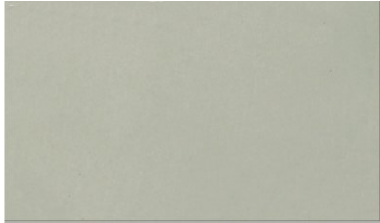


# Ninigi

## THERMALLY CONDUCTIVE COMPOUNDS D A T A S H E E T

### SILICONE SHEETS FOR PADS



#### Specification:

- 1) Breakdown voltage:  $\geq 5$  kV
- 2) Thermal conductance: 1 W/mK
- 3) Operating temperature range:  
-60°C ~ 200°C
- 4) Conformity with: UL-94V-0

#### **SILI150X220-G**

#### Notes:

**None** – without glue  
**G** – with glue

#### Sheet Dimensions:

**150X220** – 150 x 220 mm  
**300X300** – 300 x 300 mm

<b>SERIES NO.</b>	<b>THICKNESS</b>
<b>SILI150X220</b>	0.23 mm
<b>SILI150X220-G</b>	0.23 mm
<b>SILI300X300</b>	0.3 mm
<b>SILI300X300-G</b>	0.3 mm