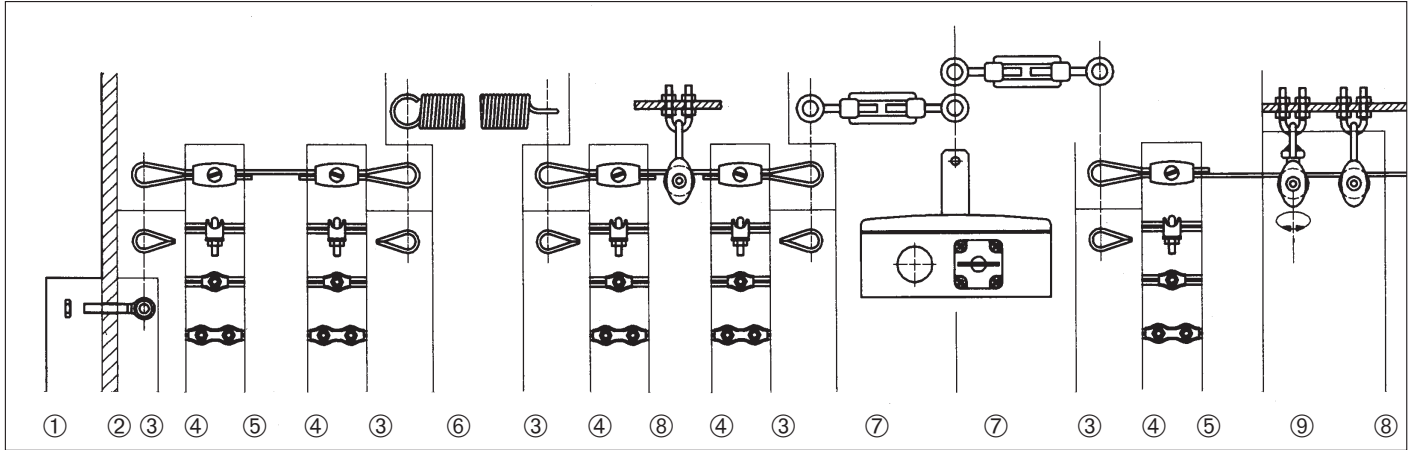


# Rope Pull switch accessories



<b>① Nut</b>	
M 6	260.0439.090
M 8	260.0439.187
M 10	260.0934.092



<b>④ Rope clamp</b>	
D 2	269.0000.004
D 3	269.0000.005
D 4	269.0000.006



<b>⑦ Tension adjuster</b>	
M 5 x 50	269.1480.016
M 6 x 60	269.1480.017
M 6 x 110	269.1480.025



<b>② Eye bolt</b>	
M 10 x 50	260.0444.076
M 6 x 50	260.0444.185
M 8 x 50	260.0444.186



<b>④ Rope clamp (simplex)</b>	
D 2	269.0000.007
D 3	269.0000.008
D 4	269.0000.009



<b>⑦ Turnbuckle nut</b>	
M 6	260.1479.188
M 8	260.1479.189



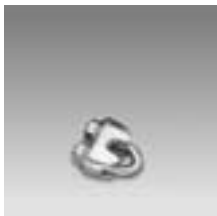
<b>③ Thimble</b>	
D 2.5	269.6899.013
D 3	269.6899.014
D 4	269.6899.015
D 5	269.6899.001



<b>④ Rope clamp (duplex)</b>	
D 2	269.0000.010
D 3	269.0000.011
D 4	269.0000.012



<b>⑧ Pulley block</b>	
269.0000.022	



<b>④ Rope clamp</b>	
D 5	269.0741.002



<b>⑤ Rope</b>	
Line- $\varnothing$ /sleeve- $\varnothing$	
D 1.8/D 5	369.9100.008
D 2/D 2.5	369.9100.024
D 3/D 4	369.9100.025
D 4/D 5	369.9100.026



<b>⑨ Pulley block</b>	
swivel	269.0000.023



<b>⑥ Spring</b>	
18 N	365.2100.331
24 N	365.2100.332



<b>Pulley block clamp for ⑧ and ⑨</b>	
391.1751.437	