

## Portable Refractometers

**Measure the concentration of Sugar, Salt, Lubricants, Antifreeze, Cutting Fluids & more**  
Available with or without Automatic Temperature Compensation

### Features:

- Easy to operate refractometers provide accurate and repeatable measurements on easy to read scales
- Automatic temperature compensation models available for sugar, salt, lubricants, cutting fluids, and antifreeze
- Requires only 2 or 3 drops of solution
- The prism and lens with a simple focus adjustment provides repeatable results
- Complete with carrying case and calibration screwdriver

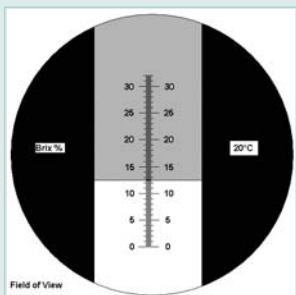


RF18, RF20

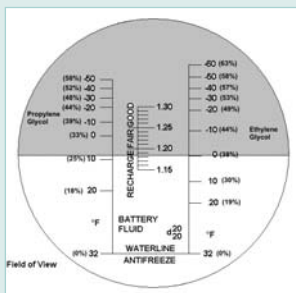
RF10

RF15, RF40

RF30



RF10, 15 - Scale view through eyepiece



RF40 - Scale view through eyepiece

Specifications				
Model	Type	Ranges	Resolution	Accuracy
RF16	Sucrose	0 to 10% Brix	0.1	±0.1%
RF11	Sucrose (ATC)	0 to 10% (10 to 30°C)	0.1	±0.1%
RF18	Lubricants/Cutting fluids	0 to 18% Brix	0.2	±0.2%
RF12	Lubricants/Cutting fluids (ATC)	0 to 18% Brix (10 to 30°C)	0.2	±0.2%
RF10	Sucrose	0 to 32% Brix	0.2	±0.2%
RF15	Sucrose (ATC)	0 to 32% Brix (10 to 30°C)	0.2	±0.2%
RF20	Salt (ATC)	0 to 100ppt (10 to 30°C)	0.001	±0.1%
1.000 to 1.070 Refractive Index				
RF40	Coolant (ATC)	-60 to 32°F Propylene Glycol freeze point	2°F	±2%
		-60 to 25°F Ethylene Glycol freeze point	2°F	±2%
		1.15 to 1.30 Specific Gravity of Battery Acid	0.01	
RF41	Coolant (ATC)	-50 to 0°C Propylene Glycol freeze point	1°C	±2%
		-50 to 0°C Ethylene Glycol freeze point	1°C	±2%
		1.15 to 1.30 Specific Gravity of Battery Acid	0.01	
RF30	Triple Range General Service	0 to 41% Brix	0.2	±0.2%
		42 to 71% Brix	0.2	±0.2%
		72 to 90% Brix	0.2	±0.2%
Dimensions/Wt		RF10/RF15: 6.6 x 1.6 x 1.2" (170 x 40 x 30mm)/ 7oz (200g); RF11/RF16: 7.5 x 1.6 x 1.2" (190 x 40 x 30mm)/ 6.5oz (185g); RF12/RF18: 6.7 x 1.6 x 1.2" (170 x 40 x 30mm)/ 6.5oz (185g); RF20: 7.6 x 1.5 x 1.5" (194 x 38 x 38mm)/ 8oz (227g); RF40/RF41: 6.2 x 1.6 x 1.2" (160 x 40 x 30mm)/ 6.3oz (180g) RF30: 7.9 x 1.5 x 1.1" (200 x 38 x 28mm)/ 21.86oz (620g)		

### Ordering Information:

- RF16** .....0 to 10% Brix Refractometer  
**RF11** .....0 to 10% Brix Refractometer with ATC  
**RF18** .....0 to 18% Brix Refractometer  
**RF12** .....0 to 18% Brix Refractometer with ATC  
**RF10** .....0 to 32% Brix Refractometer  
**RF15** .....0 to 32% Brix Refractometer with ATC  
**RF20** .....Salinity Refractometer with ATC  
**RF40** .....Battery Coolant/Glycol Refractometer with ATC (°F)  
**RF41** .....Battery Coolant/Glycol Refractometer with ATC (°C)  
**RF30** .....Triple Range General Service Brix Refractometer

