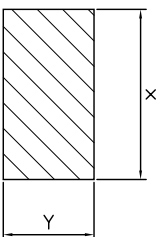
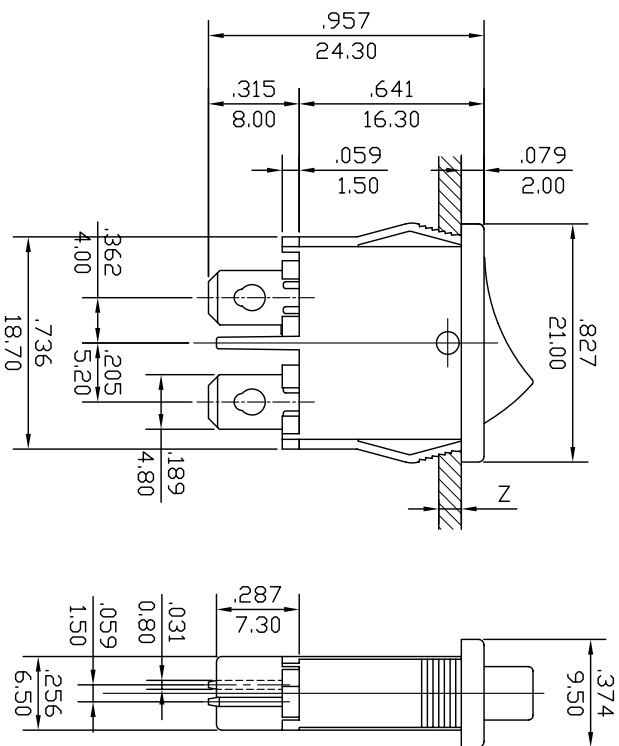


ROCKER SWITCH MODEL MR SERIES

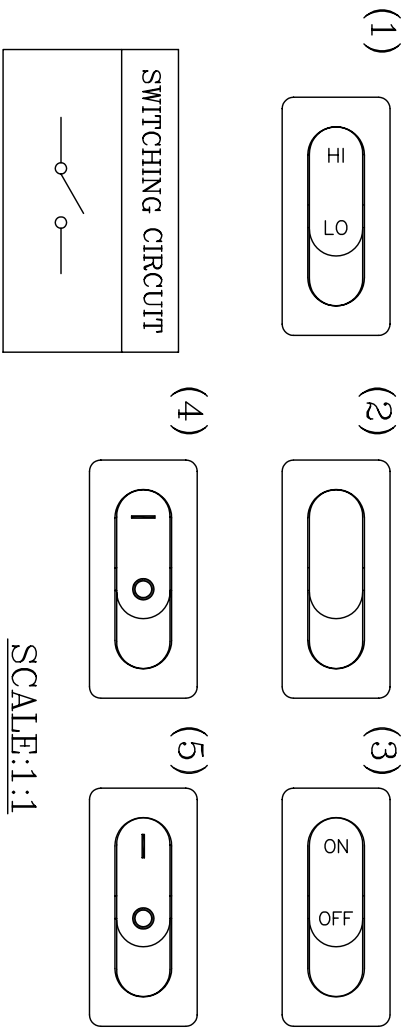
RATING: 12A 125VAC, 10A 250VAC 1/4HP (CSA)
 10A 125VAC, 8A 250VAC 1/4HP (UL)
 10(4)A 250V~T125/55 (VDE, SEMKO, DEMKO, NEMKO,
 FIMKO, SEV)

DIELECTRIC WITHSTAND VOLTAGE: 1000VAC 1 MINUTE
 INSULATION RESISTANCE: 100MΩ (MIN.)
 CONTACT RESISTANCE: 20mΩ (MAX.)

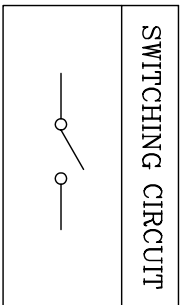


PANEL CUTOUT DIMENSION TABLE

X(CUTOUT DIMENSION)	Y(CUTOUT DIMENSION)	Z(PANEL THICKNESS)
19.2 ⁺⁰ _{-0.15}	6.65~6.75mm	0.75~1.25mm
19.4 ⁺⁰ _{-0.15}	6.65~6.75mm	1.25~2mm
19.8 ⁺⁰ _{-0.15}	6.65~6.75mm	2~3mm



SCALE:1:1



MODEL NO, SEE NUMBER SYSTEM

REVISION	DESCRIPTION	APPROVAL BY	TOLERANCES X±0.3	ANGLE 1/2°	UNIT mm	PART NAME	DWG NO
△						SMALL MINI-SIZED ROCKER SWITCH	S0005A
△							
△							
△							
△							

DESIGNED BY	ERIC	SCALE	DATE	PART NO	MR-H10-C*N-**-0**
DRAWN BY	吳美玉	3/2	2003.12.04		
CHECKED BY					
APPROVED BY					