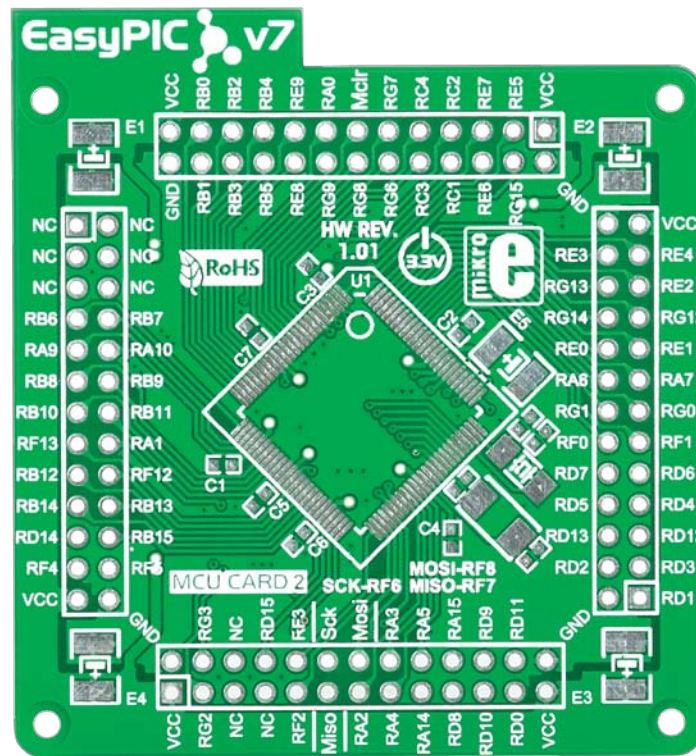


Empty 100-pin TQFP PF MCU CARD 2



Supported microcontrollers

PIC24FJ64GA010
PIC24FJ96GA010
PIC24FJ128GA010
PIC24HJ64GP210A
dsPIC33FJ64GP310A
PIC24HJ64GP510A
PIC24HJ128GP210A
dsPIC33FJ128GP310A
PIC24HJ128GP310A
PIC24HJ128GP510A
dsPIC33FJ64MC510A
dsPIC33FJ32GS610
dsPIC33FJ128MC510A
dsPIC33FJ64GP710A
PIC24HJ256GP210A
dsPIC33FJ256GP510A
dsPIC33FJ128GP710A
dsPIC33FJ64GS610
dsPIC33FJ64MC710A
dsPIC33FJ256MC510A
PIC24HJ256GP610A
dsPIC33FJ128MC710A
dsPIC33FJ256GP710A
dsPIC33FJ256MC710A

Bill of Materials for PF MCU card 2

Designator	Comment	Footprint
C1	100nF	0603
C2	100nF	0603
C3	100nF	0603
C4	100nF	0603
C5	100nF	0603
C6	100nF	0603
C7	100nF	0603
C8	22pF	0603
C9	22pF	0603
C10	22pF	0603
C11	22pF	0603
E1	10uF	ELCO CASE-B
E2	10uF	ELCO CASE-B
E3	10uF	ELCO CASE-B
E4	10uF	ELCO CASE-B
E5	10uF	ELCO CASE-B
HD1	M2X26	HEADER 2x13A
HD2	M2X26	HEADER 2x13B
HD3	M2X26	HEADER 2x13C
HD4	M2X26	HEADER 2x13D
U1	MICROCONTROLLER	LQFP-100
X1	8MHz	CRYSTAL ABM7 SMD V2
X2	32.768KHz	FC-255

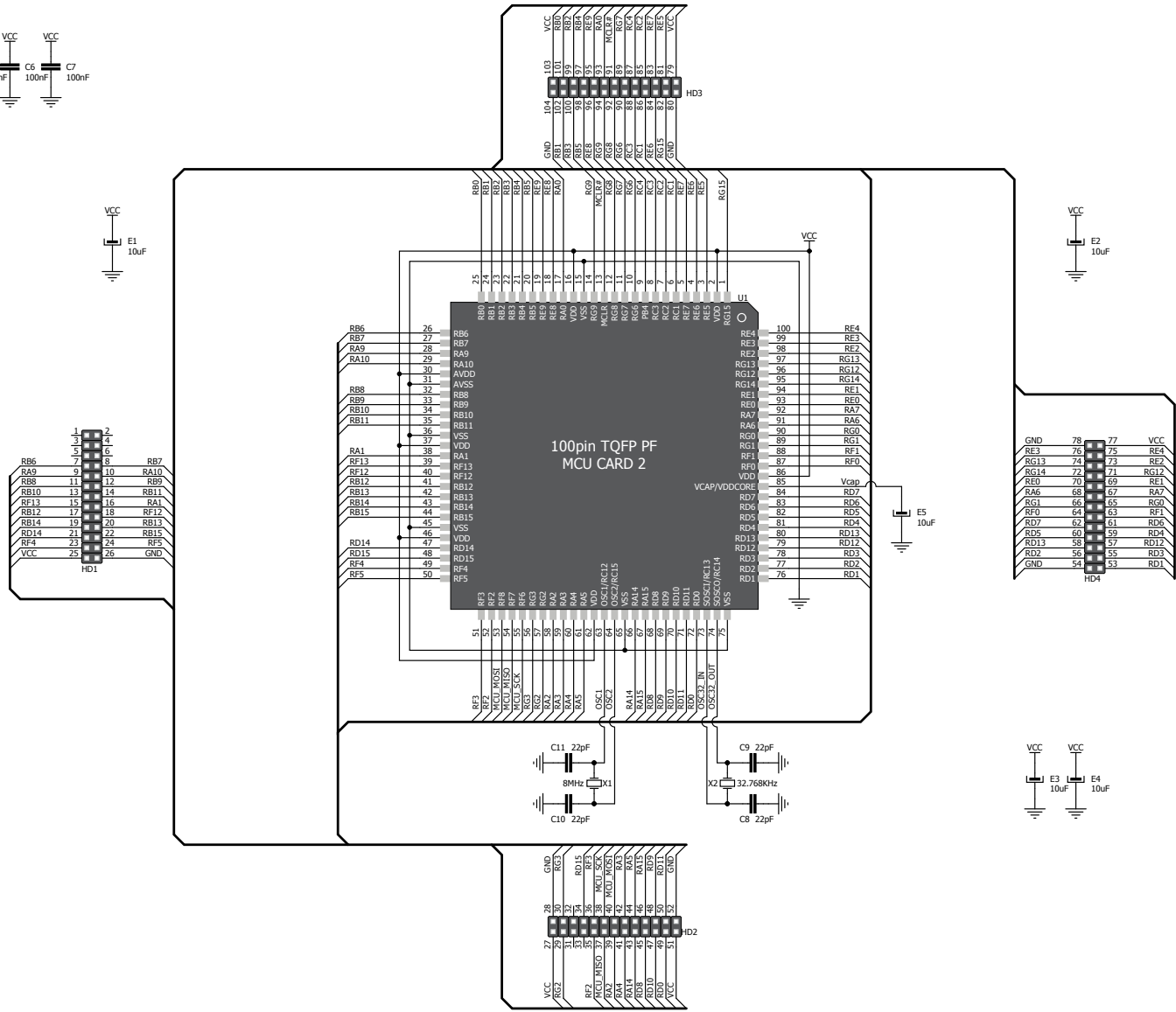
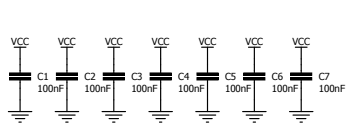


Figure 1: MCU card schematic

Card dimensions

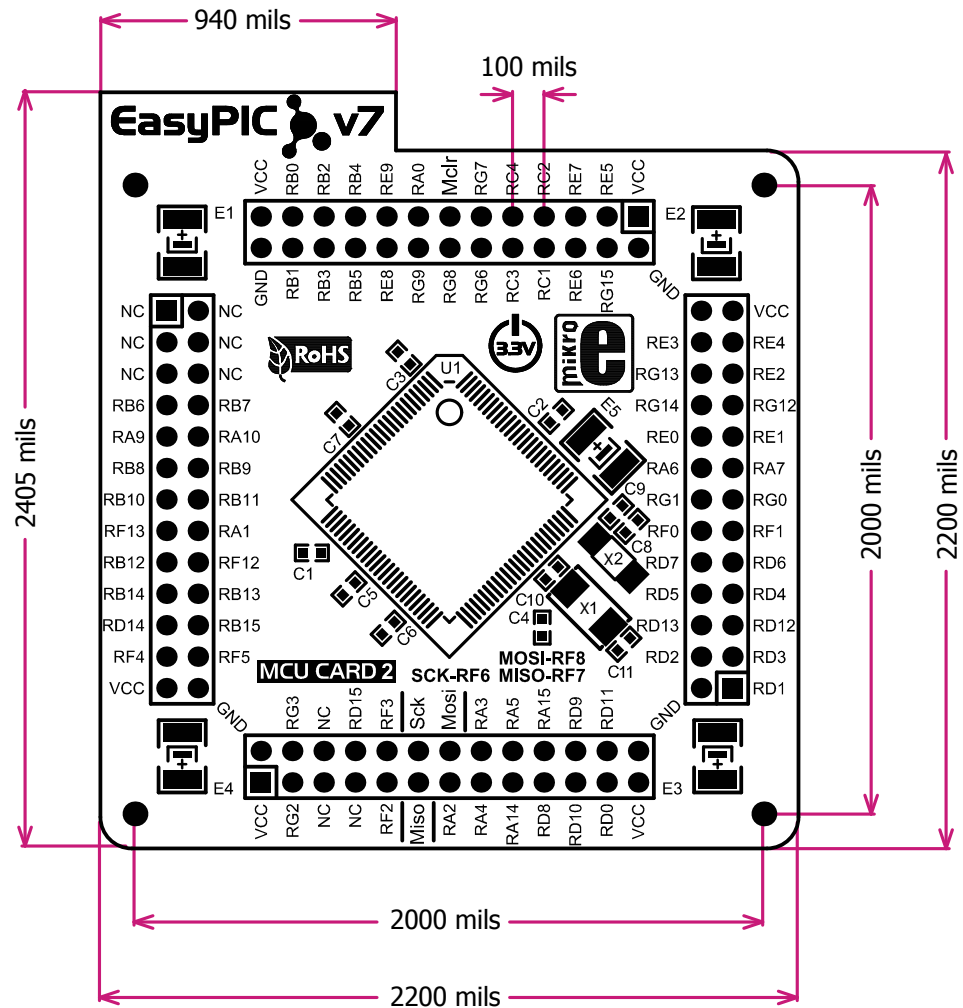
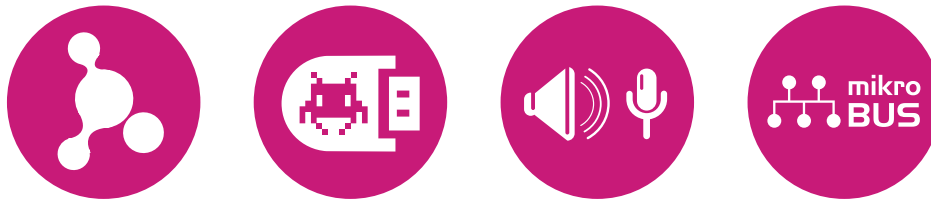


Figure 2: MCU card dimensions.



If you want to learn more about our products, please visit our website at www.mikroe.com

If you are experiencing some problems with any of our products or just need additional information, please place your ticket at www.mikroe.com/esupport

If you have any questions, comments or business proposals,
do not hesitate to contact us at office@mikroe.com