



ul. Konstytucyjna 79/81
95-200 Pabianice
tel/fax 48 42 2270971 POLAND
e-mail: fif@fif.com.pl

CP-709 VOLTAGE RELAYS one-phase type

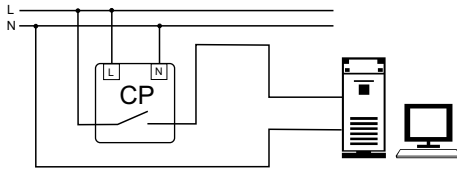


www.fif.com.pl

F&F products are covered by an 24 months warranty from date of purchase

PURPOSE

Voltage relays CP-709 serves to voltage control in single phase mains and to protect receiver against the effects of voltage collapse or increase beyond set values.



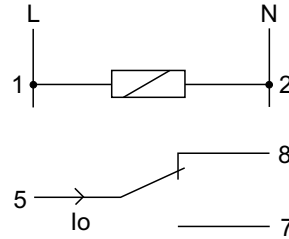
FUNCTIONING

Lower voltage value ($U1$) and upper voltage value ($U2$) are set by means of potentiometers. It is so-called eye of voltage, in limits of which can occur changes of phases voltages that do not cause activation of relay. Supplied a relay is signalized by shine of LED green U. Correct value of voltage is signalized by shine of yellow LED. (position of joint 5-7). Change of phase voltage on one of phases above or below set voltage thresholds will cause activation of relay (switch joints to position 5-8). Decrease of voltage below establish value $U1$ is signalized by shine of LED red ($U1$). Increase of voltage below establish value $U2$ is signalized by shine of LED red ($U2$). Reactivation follows automatically return of correct voltage value.

ASSEMBLY

1. Take OFF the power.
2. Put on the relay on the rail in the switchgear box.
3. Connected to installation with wiring diagram.
4. Set to voltage thresholds $U1$ and $U2$.

WIRING DIAGRAM



TECHNICAL DATA

supply	150÷450V AC
current load	<16A
joint	1P
sygnalling of supply	4×LED
voltage activation treshold	
lower $U1$	150÷210V
upper $U2$	230÷260V
hystereisis	
for $U1$	5V
for $U2$	5V
activation time	
for $U1$	0,5sec
for $U2$	0,1sec
recovery time	
for $U1$	1,5sec
for $U2$	1,5sec
power consumption	0,8W
working temperature	-25÷50°C
connection	screw terminals 2,5mm ²
dimensions	1 module (18mm)
fixing	on rail TH-35