



Czujniki widelkowe WFM

WFM80-60P321



Nazwa modelu > **WFM80-60P321**

Numer cz ci > **6037828**



Produkt mo e ró ni si od ilustracji

At a glance

- Highly visible red emitted light
- No setup, out-of-the-box operation
- 360° output indicator
- 5 fork sizes: maximum depth 120 mm, maximum width 180 mm
- Rugged, IP 67 aluminum housing

Your benefits

- Fixed housings guarantee a high level of operational safety with simple commissioning
- A visible red light enables easy alignment and fast adjustment
- The 360-degree yellow output indicator makes continual process control possible
- A wide range of different fork sizes increases installation flexibility
- The aluminum housing meets all requirements for use in harsh industrial conditions



Cechy

Sposób działania:	Optical detection principle
Fork width:	80 mm
Fork depth:	60 mm
MDO ¹⁾ :	0,8 mm
Label detection:	-
Nadajnik światła:	Red LED
Nastawa:	None
Tryb przełączania:	Dark-switching

¹⁾ Najmniejszy wykrywalny obiekt

Mechanika/elektronika

Napięcie zasilania VS ¹⁾ :	DC 10 V ... 30 V
Tętnienia resztkowe ²⁾ :	< 10 %
Current consumption ³⁾ :	< 20 mA
Switching frequency ⁴⁾ :	4 kHz
Czas reakcji ⁵⁾ :	125 µs
Stability of response time:	± 15 µs
Wyjście przełączające:	NPN: HIGH = approx. VS/LOW ≤ 1.5 V PNP: HIGH = VS - ≤ 1.5 V/LOW = 0 V
Tryb przełączania:	PNP

Output current I_{max}: 100 mA
 Initialization time: 140 ms
 Sposób przyłączenia: Connector M8, 3-pin
 Bezpieczna jasność oświetlenia: Sunlight: ≤ 10.000 klx
 Klasa ochronności⁶⁾: III
 Układ zabezpieczenia: Vs connections reverse-polarity protected
 Wyjście Q zabezpieczone przed zwarciami
 Tłumienie interferencji

Enclosure rating: IP 67
 Ciężar: Ca. 80 g ... 190 g⁷⁾
 Housing material: Aluminium

1) Limit values, reverse-polarity protected, operation in short-circuit protected network, max. 8 A²⁾ May not exceed or fall short of V_S tolerances³⁾ Bez obciążenia⁴⁾
 With light/dark ratio 1:1⁵⁾ Signal transit time with resistive load⁶⁾ Reference voltage DC 50 V⁷⁾ Depending on fork width

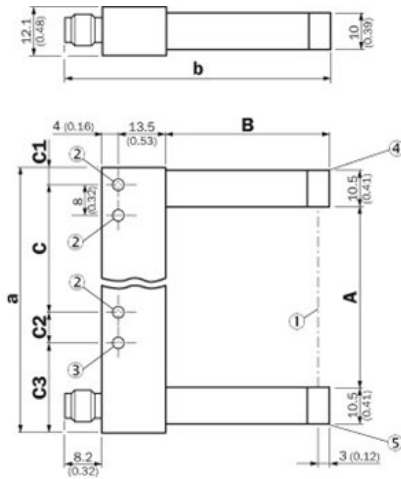
Dane otoczenia

Ambient temperature¹⁾: Operation: -10 ... 60 °C
 Storage: -40 ... 80 °C

Obciążenie uderzeniowe: According to EN 60068-2-27
 UL File-No.: UL No. NRKH.E191603 & cUL No. NRKH7.E191603

1) Do not bend below 0 °C

Dimensional drawing

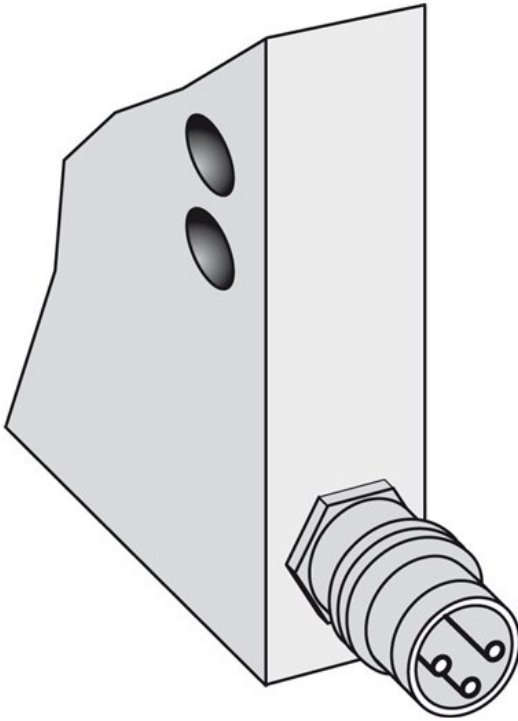


Dimensions in mm (inch)

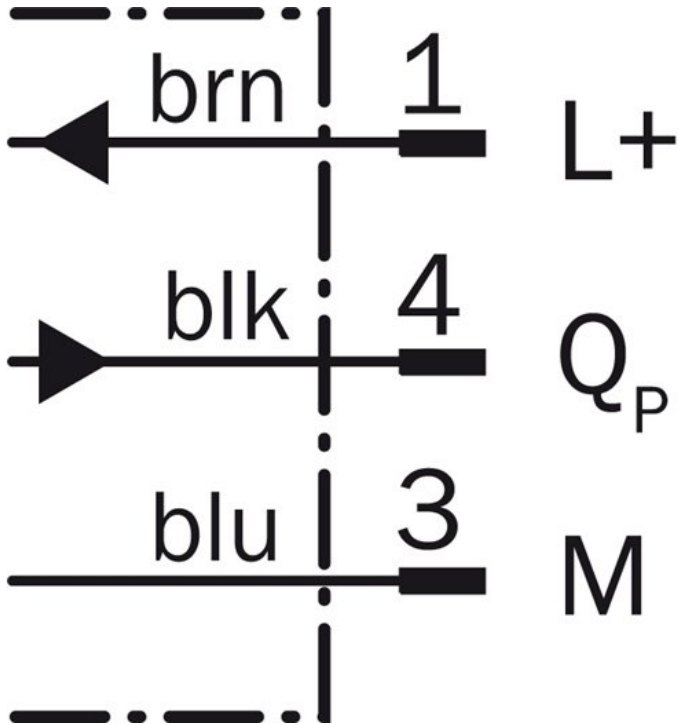
	A Fork width	B Fork depth	C	C1
WFM30	30 (1.18)	42 (1.65)	30 (1.18)	6.5 (0.26)
WFM50	50 (1.97)	60 (2.36)	40 (1.57)	6.5 (0.26)
WFM80	80 (3.15)	60 (2.36)	70 (2.76)	6.5 (0.26)
WFM120	120 (4.72)	124.3 (4.89)	100 (3.94)	17 (0.67)
WFM180	180 (7.09)	124.3 (4.89)	152 (5.98)	22 (0.87)

	C2	C3	a	b
WFM30	- (-)	- (-)	54 (2.13)	67.7 (2.67)
WFM50	8 (0.31)	19.5 (0.77)	74 (2.91)	85.7 (3.37)
WFM80	8 (0.31)	19.5 (0.77)	104 (4.09)	85.7 (3.37)
WFM120	10 (0.39)	17 (0.67)	144 (5.67)	150.2 (5.91)
WFM180	8 (0.31)	22 (0.87)	204 (8.03)	150.2 (5.91)

Connection type



Connection diagram



Australia

Phone +61 3 9457 0600
1800 334 802 – tollfree
E-Mail sales@sick.com.au

Belgium/Luxembourg

Phone +32 (0)2 466 55 66
E-Mail info@sick.be

Brasil

Phone +55 11 3215-4900
E-Mail sac@sick.com.br

Canada

Phone +1 905 771 14 44
E-Mail information@sick.com

Ceská Republika

Phone +420 2 57 91 18 50
E-Mail sick@sick.cz

China

Phone +86 4000 121 000
E-Mail info.china@sick.net.cn
Phone +852-2153 6300
E-Mail ghk@sick.com.hk

Danmark

Phone +45 45 82 64 00
E-Mail sick@sick.dk

Deutschland

Phone +49 211 5301-301
E-Mail kundenservice@sick.de

España

Phone +34 93 480 31 00
E-Mail info@sick.es

France

Phone +33 1 64 62 35 00
E-Mail info@sick.fr

Great Britain

Phone +44 (0)1727 831121
E-Mail info@sick.co.uk

India

Phone +91-22-4033 8333
E-Mail info@sick-india.com

Israel

Phone +972-4-6801000
E-Mail info@sick-sensors.com

Italia

Phone +39 02 27 43 41
E-Mail info@sick.it

Japan

Phone +81 (0)3 3358 1341
E-Mail support@sick.jp

Magyarország

Phone +36 1 371 2680
E-Mail office@sick.hu

Nederlands

Phone +31 (0)30 229 25 44
E-Mail info@sick.nl

Norge

Phone +47 67 81 50 00
E-Mail austefjord@sick.no

Österreich

Phone +43 (0)22 36 62 28 8-0
E-Mail office@sick.at

Polska

Phone +48 22 837 40 50
E-Mail info@sick.pl

România

Phone +40 356 171 120
E-Mail office@sick.ro

Russia

Phone +7-495-775-05-30
E-Mail info@sick.ru

Schweiz

Phone +41 41 619 29 39
E-Mail contact@sick.ch

Singapore

Phone +65 6744 3732
E-Mail admin@sicksgp.com.sg

Slovenija

Phone +386 (0)1-47 69 990
E-Mail office@sick.si

South Africa

Phone +27 11 472 3733
E-Mail info@sickautomation.co.za

South Korea

Phone +82 2 786 6321/4
E-Mail info@sickkorea.net

Suomi

Phone +358-9-25 15 800
E-Mail sick@sick.fi

Sverige

Phone +46 10 110 10 00
E-Mail info@sick.se

Taiwan

Phone +886-2-2375-6288
E-Mail sales@sick.com.tw

Türkiye

Phone +90 (216) 528 50 00
E-Mail info@sick.com.tr

United Arab Emirates

Phone +971 (0) 4 8865 878
E-Mail info@sick.ae

USA/México

Phone +1(952) 941-6780
1 800-325-7425 – tollfree
E-Mail info@sickusa.com

More representatives and agencies
at www.sick.com