



MICRO SWITCH

FREEPORT, ILLINOIS, U.S.A.
A DIVISION OF HONEYWELL

FED. MFG. CODE 91829

SWITCH -- BASIC

CATALOG LISTING



V3-101

CKB 0100

M V3-101

DRAWING NUMBER

ISSUE **101**

12/18/17

REVISIONS

A CO20189

25 MAY 65

B CO21688

M B F

3 OCT 66

C CO24941

M B S

3 DEC 68

D CO26075

M B S

26 AUG 69

E CO31748

S D

2 APR 73

F CO 32395

GLH

14 AUG 73

G CU 59921

SMA

29 SEPT 86

H CO74475

K D R

15 APR 93

REPLACES

RELEASE NO.

CHECK

27 MAY 65

27 MAY 65

27 MAY 65

27 MAY 65

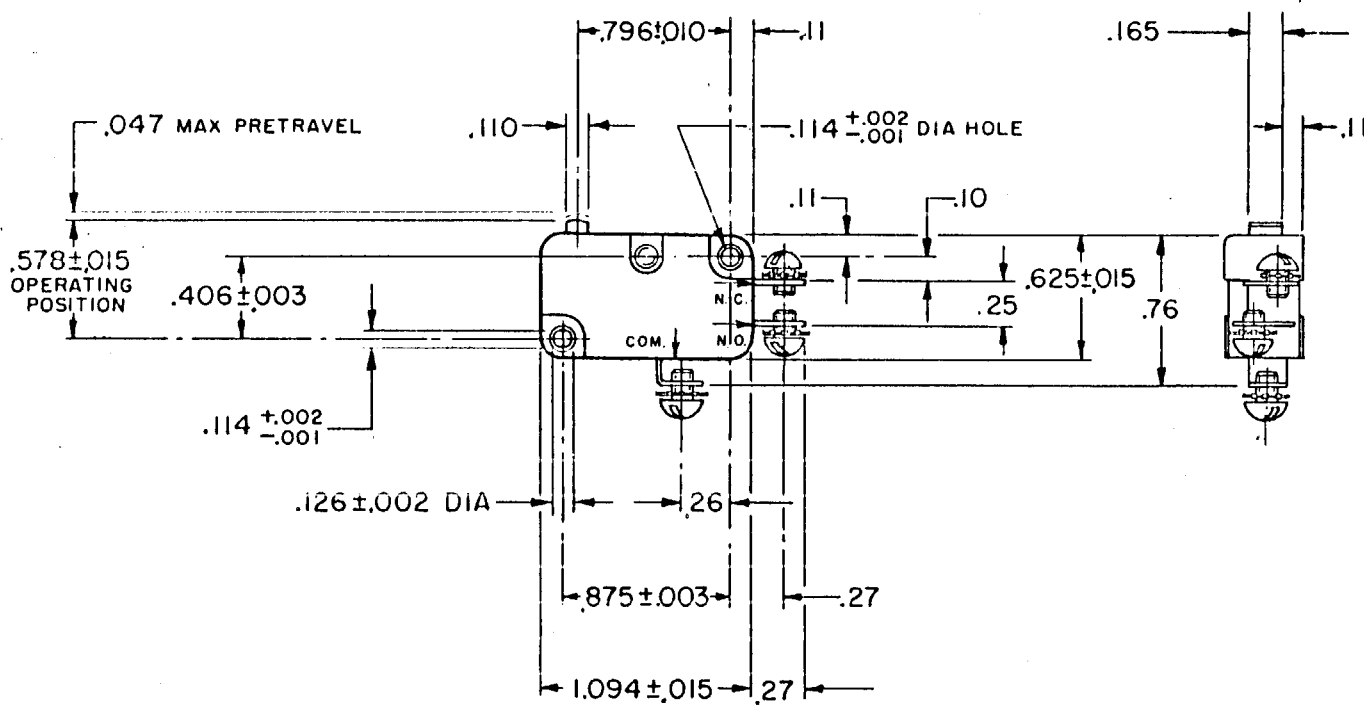
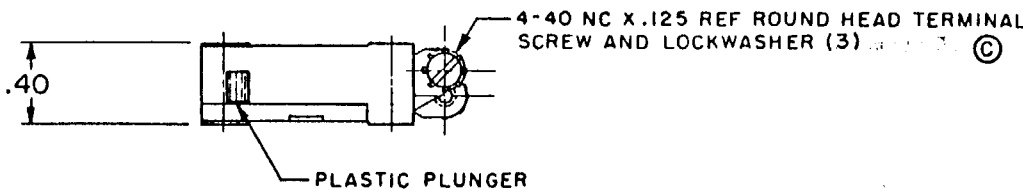
27 MAY 65

27 MAY 65

27 MAY 65

27 MAY 65

27 MAY 65



THIS DRAWING COVERS A PROPRIETARY ITEM AND IS THE PROPERTY OF MICRO SWITCH, A DIVISION OF HONEYWELL. THIS DRAWING IS NOT TO BE COPIED OR USED WITHOUT THE APPROVAL OF MICRO SWITCH.

CHARACTERISTICS	ELECTRICAL DATA	SCALE FULL
OPERATING FORCE----- 8 OZ MAX	CONTACT ARRANGEMENT S P D T	DO NOT SCALE PRINT
RELEASE FORCE----- 2 OZ MIN	11A-1/3HP-125-250-277 VAC - L156 - 1/2A-125 VDC; 1/4A-250 VDC 4A-125 VAC "L"	UNLESS OTHERWISE NOTED DIMENSIONS ARE IN INCHES TOLERANCES ARE:
DIFFERENTIAL TRAVEL----- .006-.016		ONE PLACE (.0) ±.030 TWO PLACE (.001) ±.015 THREE PLACE (.000) ±.005 ANGLES ±
OVERTRAVEL----- .040 MIN		WEIGHT .017 LB
FREE POSITION----- .625 MAX		
RELEASE TRAVEL----- .007 MIN		

50378