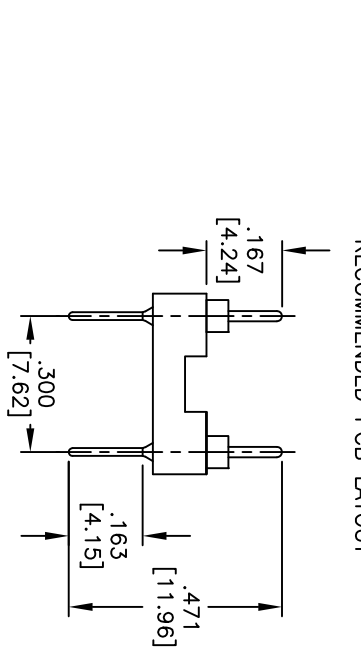
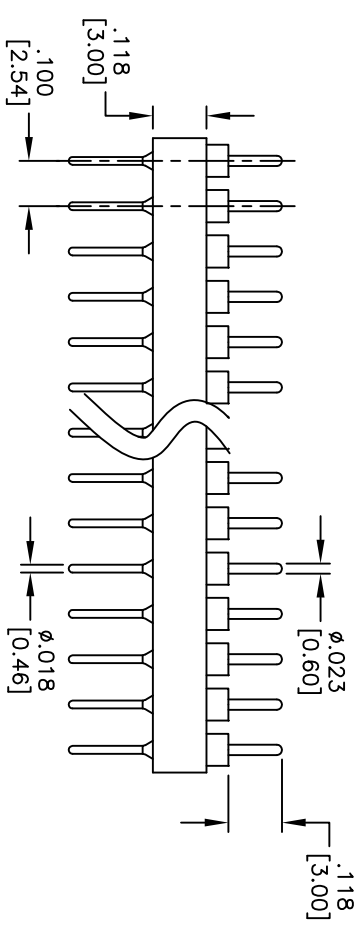
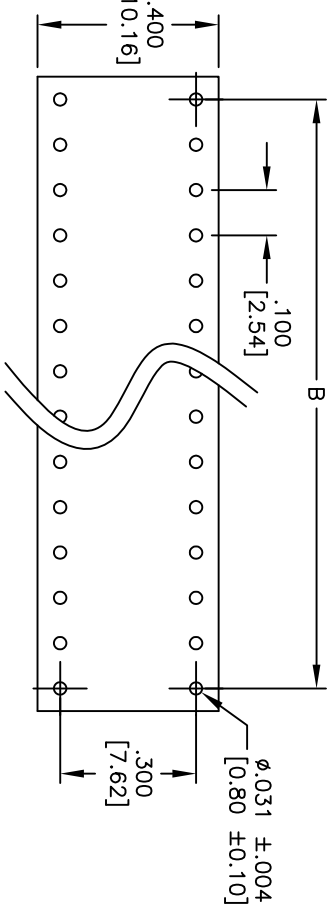
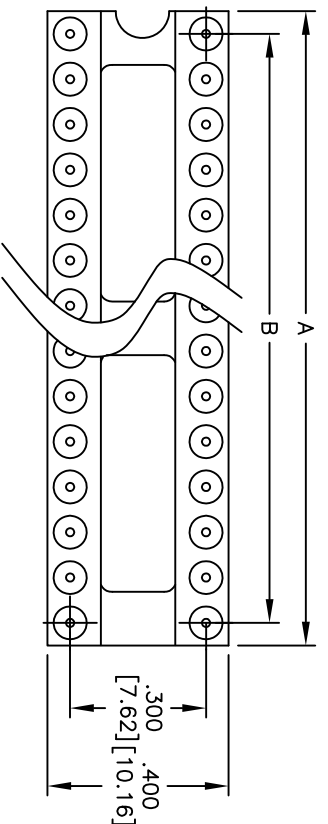


Rev	AWO #	Description	Date	Appr
-		RELEASED	8/02/10	

APPROVED: \_\_\_\_\_  
 DATE: \_\_\_\_\_ TITLE: \_\_\_\_\_



RECOMMENDED PCB LAYOUT

**SPECIFICATIONS:**  
 Material: PBT, Glass reinforced, rated UL 94V-0  
 Insulator color: Black  
 Contacts: Brass  
 Plating: Gold flash over Nickel underplate overall

**Electrical:**  
 Current rating: 3 Amp max  
 Insulation resistance: 1,000 Mohms min  
 Temperature Rating: Operating temperature: -55°C to +105°C  
 Environmental: Lead free, RoHS compliant

Positions: 06, 08, 10, 14, 16, 18, 20, 24 & 28  
 A = .100 [2.54] x No. of Positions per row  
 B = .100 [2.54] x No. of Spaces

**ADAM TECH**

909 Railway Avenue, Union, NJ 07083  
 Phone: 908-687-5000 Fax: 908-687-5710

**SREW MACHINE TERMINAL STRIP**  
 .100 [2.54] SPACING, GOLD PLATED

UNLESS OTHERWISE SPECIFIED ALL DIMENSIONS ARE IN INCHES [MM]		TOLERANCES: EXCEPT AS NOTED	
INCHES	HOLES	INCHES	HOLES
.X ±.10	ØXX ±.10	.XX ±.020	ØXXX ±.015
.XXX ±.015	ØXXX ±.010	APPROVALS	
DATE	DATE	DRAWN DY 8/02/10	
CHECKED	APPROVED	SIZE X	PART NO. TMC-3XX-1-G
APPROVED	APPROVED	REF: S00007T	SCALE: NTS

