

校訂版次 REVISIONS

版次	記述 DESCRIPTION	DATE	核可

MAXIMUM ELECTRIC CURRENT

A. W. G	26	24	22
MAX AMP	5.5	7	9

NOTE: DIN 46234

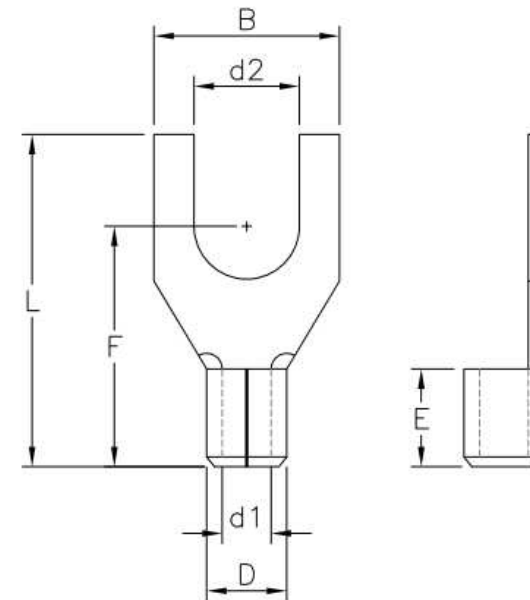
1. BRAZED SEAM

2. WIRE RANGE: 26-22 AWG / 0.1-0.5 mm²

3. MATERIAL THICKNESS: t

TOLERANCE: ±0.05

B	
0-3	+0.00 -0.14
3-6	+0.00 -0.18
6-10	+0.00 -0.22
10-18	+0.00 -0.27
18-30	+0.00 -0.33
30-50	+0.00 -0.39



WIRE RANGE AWG/mm ²	ITEM NO.	d2 ±0.20	B	F ±0.25	L ±1.00	E ±0.60	D ±0.30	d1 ±0.30	t
26-22 AWG 0.1-0.5 mm ²	ST-0902/1	2.2	5.0	10.0	12.5	4.0	2.2	1.0	0.5
	ST-0903/1	2.7	5.0	10.0	12.5				
		3.2	5.0	10.0	12.5				
		3.7	6.0	12.0	15.0				
		4.3	6.5	12.0	15.2				
		5.3	8.0	12.0	16.0				

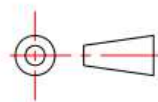
認可 APPROVALS

製圖 DRAFT: TINA

設計 DESIGN: KEN

核可 CHECKED: ANDY

第三視角
THIRD VIEW



MATERIAL

INSULATION: NON

MATERIAL: COPPER

TIN PLATING

單位 UNIT

m/m

比例 SCALE

日期 DATE: 2015. 01. 05