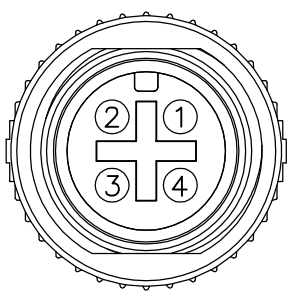
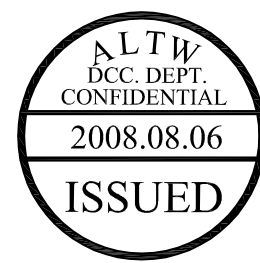
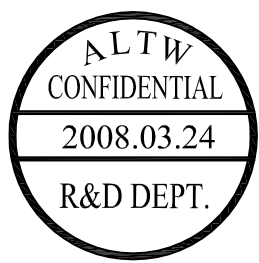
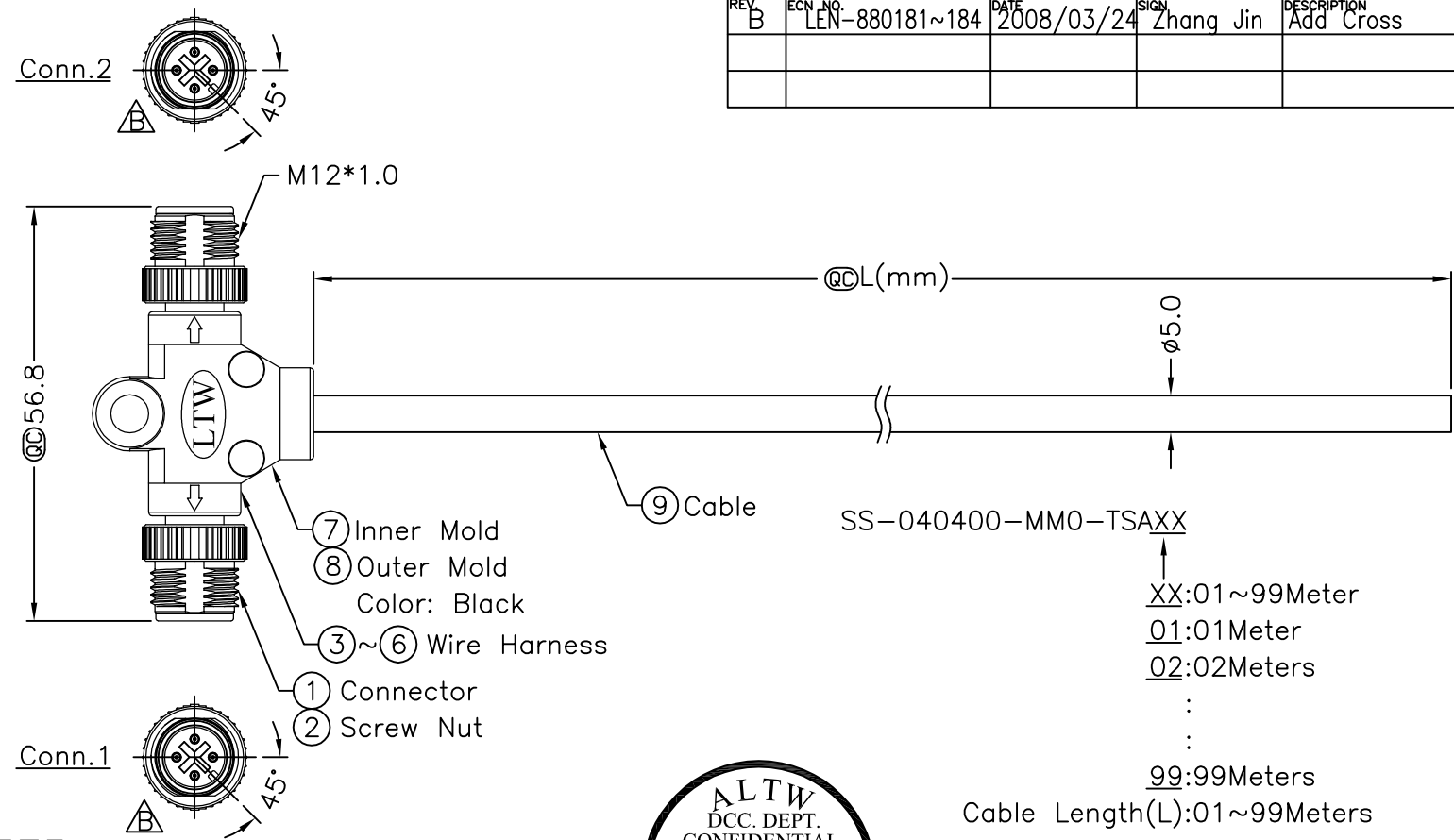


REV.	ECN NO.	DATE	SIGN	DESCRIPTION
B	LEN-880181~184	2008/03/24	Zhang Jin	Add Cross



Conn.1 & Conn.2
Pin Assignments
Front View

4	Black	黑	4
3	Blue	藍	3
2	White	白	2
1	Brown	棕	1
Conn.1	Wire Color		Conn.2
Pin Out			

Cable Length(L):01~99Meters

- Note:
- * @C Important Dimension.
 - * Waterproof Rate: IP68
 - * Housing: Black, PU
 - * Male Pin: Copper Alloy, Gold Plated
 - * Wire Harness: UL1007 24AWG, 4Pcs.
 - * Cable: UL2464 22AWG*4C+Talc Black, PVC Jacket UV Resistant OD=5.0mm
 - * Cable Length Tolerance: 1M~10M±5%mm, 11M~99±500mm.

UNIT:mm		TITLE	M12 Conn T Cable Screw		ITEM NO	DRAWN BY	DATE
TOLERANCE	±0.5 mm	SCALE	Free	SHEET 1 OF 1	DWG NO	SS-040400-MM0-TSAXX	CHECKED BY
REV.	B	SIZE	A4	@C :Inspection Item	CUSTOMER	ALTW	APPROVED BY
							Luke
							DATE
							2008/04/29

Amphenol LTW
安費諾亮泰企業股份有限公司

THIS DOCUMENT IS SUBJECT TO CHANGE WITHOUT NOTICE. IT IS CONFIDENTIAL AND A PROPERTY OF Amphenol LTW. DISCLOSURE TO THIRD PARTY HAS TO BE AUTHORIZED BY Amphenol LTW.