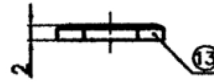
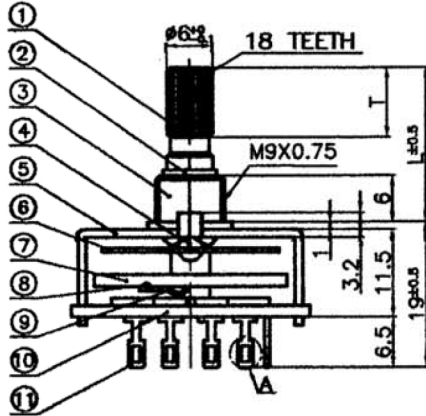
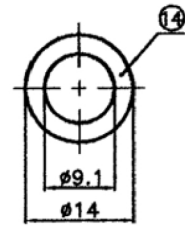


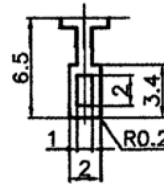
NUT 1PC



WASHER t=0.4

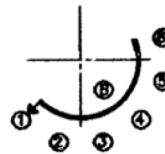
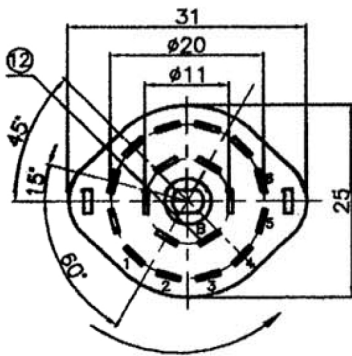


DETAIL A



t=0.5

Ninigi



Pole	position					
	B	1	2	3	4	5

DIRECTION OF ROTATION

SCHEMATIC

16	WZZ-032	Butter			
15	WG-355	Grease			
14	W-9	Washer	1	Steel t=0.4	Zinc Plating
13	N-9	NUT	1	Steel t=2	Zinc Plating
12	SR25105-6	Internal terminal	1	Brass t=0.5	Ag Plating
11	SR25105	External terminal	6	Brass t=0.5	Ag Plating
10	SR2511-6	Element	1	Phenolic t=1.5	No Plating
9	SR2506	Contact Piece	1	Phosphor-bronze t=0.1	Ag Plating
8	SR2517	Rivet	1	Aluminum	Degrease
7	SR2519-6	Change Plate	1	Phenolic t=1.5	No Plating
6	SR2515	Spring Piece	1	Stainless Steel t=0.3	Ni Plating
5	SR2509-6	Foreplate	1	Steel t=0.8	Zinc Plating
4	SR2527	Steel Ball	1	Steel	Ni Plating
3	SR2502	Bushing	1	Zinc	No Plating
2	SR2521	Wash	1	Steel t=1.0	Zinc Plating
1	SR2501-K	Shaft	1	Aluminum	No Plating

NO	MODEL	L	T	NO	MODEL	L	T
	10K	10	1.6		11.5K	11.5	3.5
✓	15K	15	5		16K	16	5
	20K	20	9		17.5K	17.5	5
	25K	25	13				
	30K	30	13				

NO	Part No	Description	QTY	Material	Finishing	MODEL	SR251-1-6-	15	K-9-S	B
TOLERANCES		DIMENSION	SCALE	DRAWING BY	CHECKED BY	APPROVED BY	DRAWING NO.			
less than	10	± 0.3	m/m	/			SR251-K-022			
above	10 - 30	± 0.5								
above	30 - 100	± 1.0								
angular dimension		± 5 °	Switch\SR25\Spec							

△			
△			
△	Jul.03'10		