

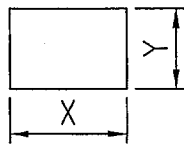
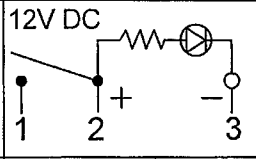
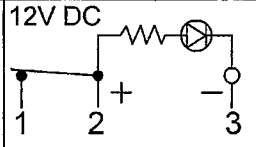
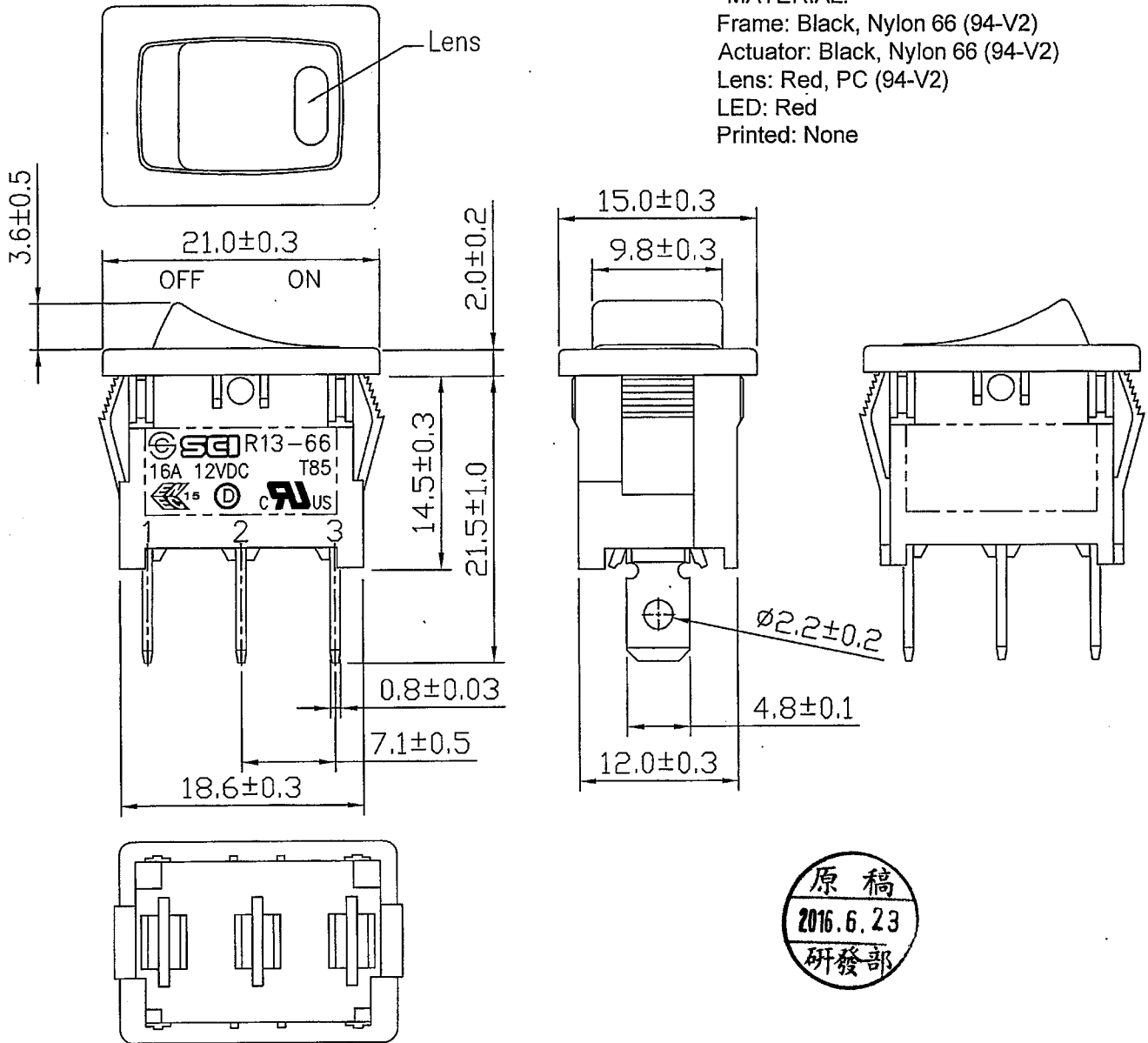


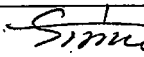
Rating	16A 12VDC  	Mounting Hole 	Circuit Diagram				
Contact Resistance	50m ohm Max.		OFF				
Insulation Resistance	DC 500V 100M ohm Min.	Thickness	X	Y			
Dielectric Strength	AC 1500V 1 minute				0.75...1.25	19.2-0.1	13.2+0.1
Operation Temperature	-20°C~85°C				1.25...2	19.4-0.1	13.2+0.1
Switch Function	3P SPST ON-OFF (LED dependent)	2...3	19.8-0.1	13.2+0.1			
			ON				

*MATERIAL:

Frame: Black, Nylon 66 (94-V2)
 Actuator: Black, Nylon 66 (94-V2)
 Lens: Red, PC (94-V2)
 LED: Red
 Printed: None



原稿
2016.6.23
研發部

						△	
						△	
Date		Name		Description		NO	
Drawn	Checked	Approved	SCI BOM NO.	1823135	Model Name	ROCKER SWITCH	
周傑輝			Customer No.		Model No.	R13-66B4-02	Rev.
6/20/16		6/20/16	Unit	mm	Shin Chin Industrial Co., Ltd.		0