



Products for tomorrow...

Headquarter Europe
MEDER electronic AG
Friedrich-List Strasse 6
D-78234 Engen-Welschingen
Tel.: +49(0)7733-9487-0
Fax: +49(0)7733-9487-32
eMail: info@meder.com
Internet: www.meder.com

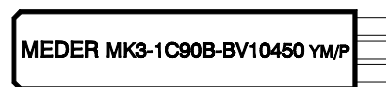
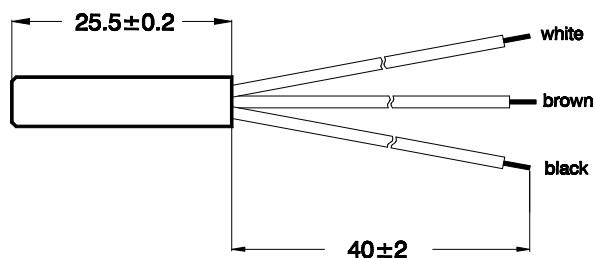
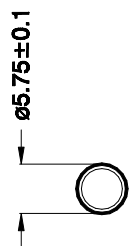
Headquarter USA
MEDER electronic Inc.
766 Falmouth Rd
Mashpee, MA 02649
Phone: +1/ 508-539-0002
Fax: +1/ 508-539-4088
eMail: salesusa@meder.com

Reed Sensor: MK3-1C90B-BV10450

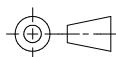
Part Number: 2230010450

Dimensions (mm)

Marking



MEDER-Label
Type
Production-Code-EN60062/Factory Code



Magnetic Characteristics	Conditions at 20°C	Min.	Typ.	Max.	Units
Pull-In Switch unmodified	Testcoil KMS-01	10		15	AT
Drop Out Switch unmodified	Testcoil	-		-	AT
Pull-In Switch modified	Testcoil KMS-13	22		44	AT
Drop Out Switch modified	Testcoil	-		-	AT

Contact Data 90F (Form C/Dry)					
Contact Rating	Any combination of the switching voltage and current must not exceed the given rated power			10	W
Switching Voltage	DC or Peak AC			175	V
Switching Current	DC or Peak AC			0,5	A
Carry Current	DC or Peak AC			1,0	A
Static Contact Resistance (initial)	Measured with 40% overdrive			150	mΩ
Insulation Resistance	RH 45%	10 ⁹			Ω
Breakdown Voltage		200			VDC
Operate Time, including Bounce	Measured with 40% overdrive			2,6	ms
Release Time				0,1	ms
Capacitance			0,8		pF

Environmental Data					
Shock	½ sine wave, duration 11ms			50	g
Vibration	from 50 - 2000 Hz			30	g
Operating Temperature	10°C/min max. allowable	-20		80	°C
Storage Temperature	10°C/min max. allowable	-20		80	°C
Soldering Temperature	5 sec. at			260	°C
Contact Resistance with Cable	Measured with 40% overdrive			160	mΩ
Cleaning				fully sealed	
Material of Case				non-reinforced semi-crystalline polybutylene terephthalate /PBTP)	
Sealing Compound				Epoxy resin	
Cable	3 x single wire LiYV/T 0,14 mm ² , Colour of wire: brown, black, white Ends of cable with approx. 5 mm tined leads				
Remarks					

Customer /Customer part number	MESIT pristroje spol. s.r.o.
--------------------------------	-------------------------------------