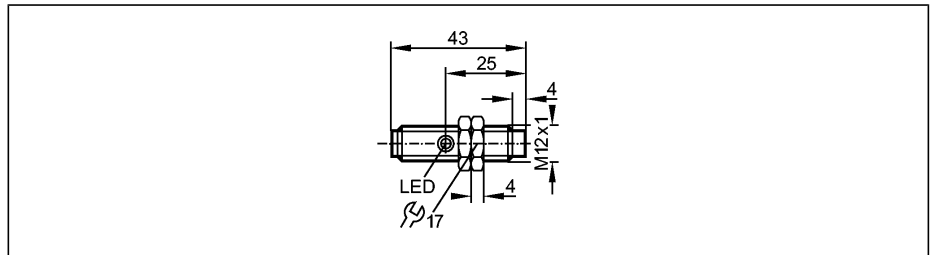


Inductive sensors

IF5539

IFB3004-BPKG/US
Inductive sensor
Metal thread M12 x 1
Connector

Sensing range 4 mm [nf]
non-flush mountable



Made in Germany

Electrical design	DC PNP
Output	normally open
Operating voltage [V]	10...36 DC
Current rating [mA]	150
Short-circuit protection	pulsed
Reverse polarity protection	yes
Overload protection	yes
Voltage drop [V]	< 2.5
Current consumption [mA]	< 15 (24 V)
Real sensing range (Sr) [mm]	4 ± 10 %
Operating distance [mm]	0...3.25
Switch-point drift [% of Sr]	-10...10
Hysteresis [% of Sr]	3...15
Switching frequency [Hz]	1500
Correction factors	mild steel = 1 / stainless steel approx. 0.7 / brass approx. 0.4 / Al approx. 0.3 / Cu approx. 0.2
Ambient temperature [°C]	-25...80
Protection	IP 67
EMC	EN 60947-5-2 EN 55011: class B
MTTF [Years]	2531
Housing materials	brass white bronze coated; active face: PC (polycarbonate)
Function display	
Switching status LED	yellow
Connection	M12 connector
Weight [kg]	0.024
Accessories (included)	2 lock nuts

Wiring

