

6

5

4

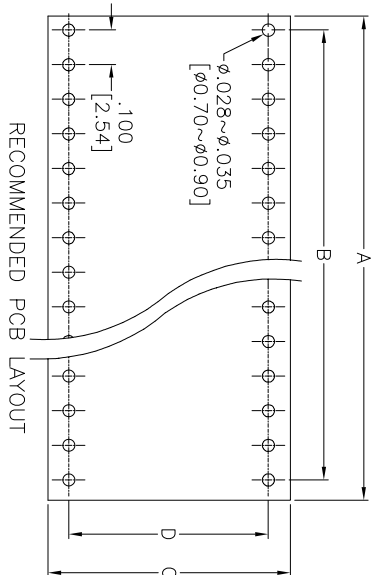
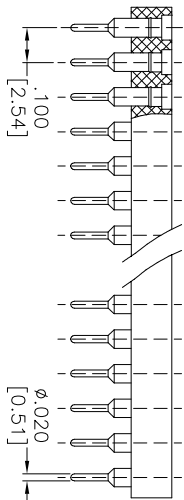
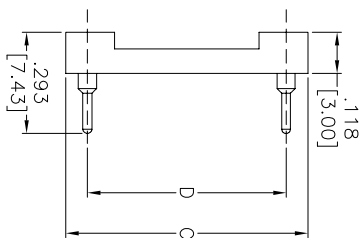
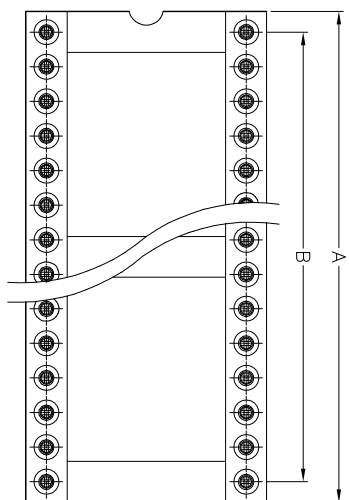
3

2

1

APPROVED: _____
 DATE: _____ TITLE: _____

Rev	AWO #	Description	Date	Appr
-		RELEASED	3/30/05	
A		REVISED SPEC.	10/25/11	



Series	POSITION	A	B	C	D
ICM-3XX	6	.300 [7.62]	.200 [5.08]		
	8	.400 [10.16]	.300 [7.62]		
	10	.500 [12.70]	.400 [10.16]		
	14	.700 [17.78]	.600 [15.24]	.400	
	16	.800 [20.32]	.700 [17.78]	.400	.300
	18	.900 [22.86]	.800 [20.32]	.400	.300
	20	1.00 [25.40]	.900 [22.86]		
	24	1.20 [30.48]	1.10 [27.94]		
	28	1.40 [35.56]	1.30 [33.02]		

ADAM TECH

909 Railway Avenue, Union, NJ 07083
 Phone: 908-687-5000 Fax: 908-687-5710

TITLE: **SCREW MACHINE IC SOCKET**
.300" ROW SPACING

SPECIFICATIONS:
Material: Insulator: Glass filled thermoplastic polyester, rated UL 94V-0
 Insulator color: Black
 Contacts: Brass
 Clip: Beryllium copper
 Plating: Gold over Nickel underplate on inner contacts, Tin over Copper underplate on outer sleeve
Electrical:
 Current rating : 3amps/contact max.
 Current resistance : $\leq 4m\Omega$ / contact
 Insulation resistance : $\geq 10,000M\Omega$ at 500 VAC
 Rated voltage : 100 VRMS / 150VDC
Mechanical:
 Operating temperature : Gold plated : -55°C to + 125°C (Continuous) Tin plated : -40°C to + 105°C
 Average insertion force : < 250g
 Average withdrawal force : > 50g
 With steel pin of $\phi 0.17$ [0.43mm]
 With steel pin of $\phi 0.17$ [0.43mm]
 Mechanical life : min. 200
 Environmental:
 Lead free, RoHS compliant.



UNLESS OTHERWISE SPECIFIED ALL DIMENSIONS ARE INCHES [MM]	
TOLERANCES: EXCEPT AS NOTED	
INCHES	HOLDS
.X ± .10	ØXX ± .10
.XX ± .020	ØXXX ± .015
.XXX ± .015	ØXXXX ± .010
APPROVALS	DATE
DRAWN	SS
CHECKED	3/30/05
APPROVED	

SIZE	PART NO.	REV.
X	ICM-3XX-1-GT	A
REF:	S00007T	
SCALE:	NIS	
SHEET	1 OF 1	

6

5

4

3

2

1