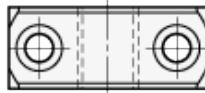
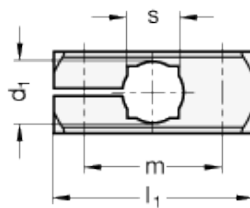
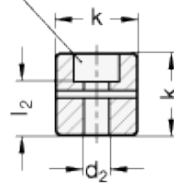


# GN 477

Clamp mountings



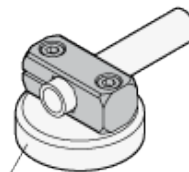
Countersunk for  
socket cap screw DIN 912



Adjustable  
clamping lever GN 511



Application example



Retaining magnet GN 51.6



## technical informations

### Material

Aluminium.

### Finish

- Version MT: matte, ground.
- Version ELS: anodised, black.

### Features and applications

The clamp mountings GN 477 have no thread. Fixing or clamping is made via two threads on the attachment side. The bore spacing  $m$  of the clamp mountings GN 477 is matched with the foot clamp mountings GN 473 as well as retaining magnets GN 51.6 and the flanged bolts GN 480.

### Accessories

Clamping kits [GN 511](#) (clamping handles GN 300.1 with distance bushing)

Standard Elements	Main dimensions							Clamping kits	Weight
Description	$d_1$ Bore B for shaft tol. h11	k	$d_2$	$l_1$	$l_2$	m	s Square V	for $d_3$	g
GN 477-B8-MT	B8	14	M 4	31.5	10	22	-	GN 511-M4-20	11
GN 477-B10-MT	B10	16	M 5	38	10.5	27	8	GN 511-M5-25	18
GN 477-B12-MT	B12	16	M 5	38	10.5	27	10	GN 511-M5-25	37
GN 477-B15-MT	B15	20	M 6	45	14	32	12	GN 511-M6-25	40
GN 477-B16-MT	B16	20	M 6	45	14	32	-	GN 511-M6-25	29
GN 477-B20-MT	B20	25	M 6	50	14	36	16	GN 511-M6-32	52
GN 477-B8-ELS	B8	14	M 4	31.5	10	22	-	GN 511-M4-20	11
GN 477-B10-ELS	B10	16	M 5	38	10.5	27	8	GN 511-M5-25	18
GN 477-B12-ELS	B12	16	M 5	38	10.5	27	10	GN 511-M5-25	20
GN 477-B15-ELS	B15	20	M 6	45	14	32	12	GN 511-M6-25	31
GN 477-B16-ELS	B16	20	M 6	45	14	32	-	GN 511-M6-25	29
GN 477-B20-ELS	B20	25	M 6	50	14	36	16	GN 511-M6-32	52



STANDARD MACHINE ELEMENTS WORLDWIDE