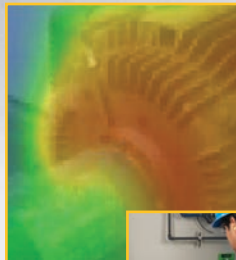


## KEY APPLICATIONS

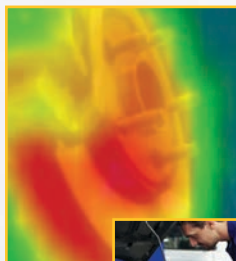
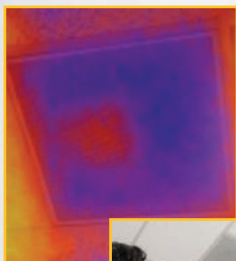


### Electrical

- Electrical panels and wiring
- Fuses and insulators
- Switch gear

### Industrial maintenance

- Motors, pumps, bearings and windings
- Belts and drive shafts
- Steam traps



### HVAC/R

- Ducts, grills and diffusers
- Heating and cooling systems
- Bearing components
- Pipes

### Automotive

- Brakes
- Condensers
- Wiring, bearings, exhaust systems and manifolds
- Hydraulics, compressors and seals

## 2 EXCITING MODELS

	VT02	VT04
Built-in digital camera	Yes	
Infrared heat map overlay	Yes (five blending modes)	
Image optics system	PyroBlend™ optic	PyroBlend™ Plus optic, 4 x sharper image
Center-point temperature measurement	Yes	
Field of view	20° x 20°	28° x 28°
Battery	4 AA batteries (8 hours)	Li-Ion rechargeable battery (8 hours)
Temperature alarms	—	Yes
Temperature range	-10 °C to +250 °C (14 °F to 482 °F)	
Temperature measurement accuracy	± 2 °C or ± 2 %	
Compact and focus free	Yes – no training required	
SD card (4 GB included)	Yes – 10,000 images per GB	
Professional reporting SmartView® software	Free download from Fluke website. <a href="http://www.fluke.com/vtsmartview">www.fluke.com/vtsmartview</a>	

**Fluke Corporation**  
PO Box 9090, Everett, WA 98206 U.S.A.

**Fluke Europe B.V.**  
PO Box 1186, 5602 BD Eindhoven, The Netherlands

**For more information call:**  
In the U.S.A. (800) 443-5853 or Fax (425) 446-5116  
In Europe/M-East/Africa +31 (0) 40 2675 200 or Fax +31 (0) 40 2675 222  
In Canada (800)-36-FLUKE or Fax (905) 890-6866  
From other countries +1 (425) 446-5500 or Fax +1 (425) 446-5116  
Web access: <http://www.fluke.com>

©2012-2013 Fluke Corporation.  
Specifications subject to change without notice.  
Printed in U.S.A. 12/2013 4286364E\_EN

Modification of this document is not permitted without written permission from Fluke Corporation.

## Visual IR Thermometers

# DETECT ISSUES INSTANTLY



**A troubleshooting tool with an infrared heat map**

## SEARCHING FOR TEMPERATURE ISSUES SPOT BY SPOT?

Traditional IR thermometers are designed for only one purpose – detecting single-spot temperature readings.

If you don't know exactly where to look, you can miss a serious problem or waste valuable time searching.

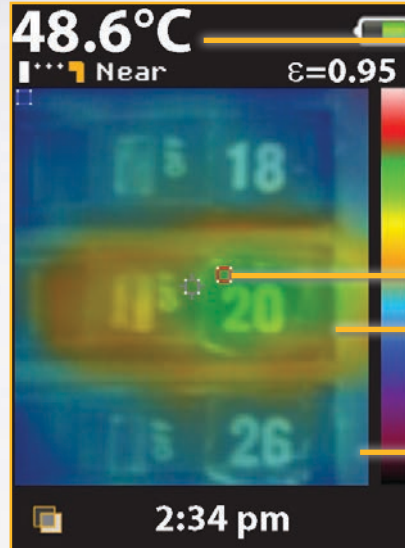


## HOT AND COLD SPOTS CAN'T HIDE ANYMORE

Visual IR thermometers combine the convenience of a point and shoot IR thermometer with the visual insight of an infrared heat map so you can see the complete picture.

## DESIGNED TO SEE IT ALL

Every Fluke Visual IR Thermometer has a built-in digital camera with an infrared heat map overlay to instantly identify the exact location of the problem.



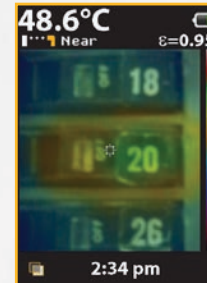
**Center-point temperature (°C/°F)**

**Hot and cold markers**

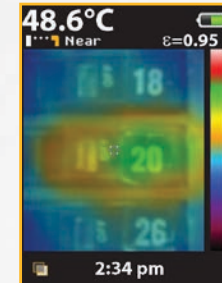
**Digital image for context**

Clearly see that breaker 20 is overloaded and communicate your findings.

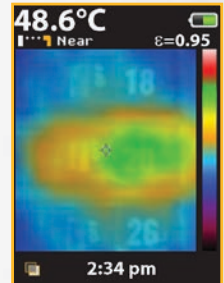
**Infrared heat map overlay**



25 % heat map



50 % heat map



75 % heat map

## GET THE PERFECT FIT FOR YOU

- Fits in your pocket
- Fits your budget – priced to outfit your entire team
- Fits the way you work – get to work as soon as you take it out of the box

