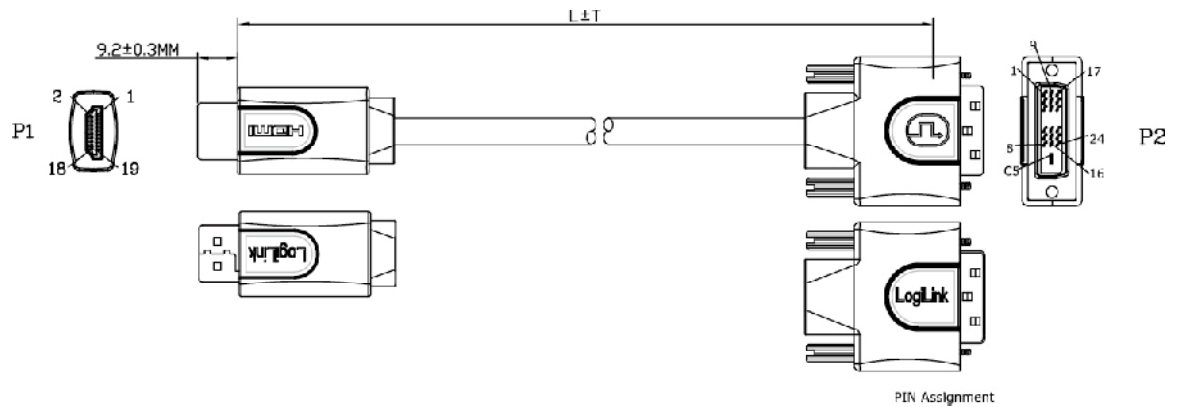


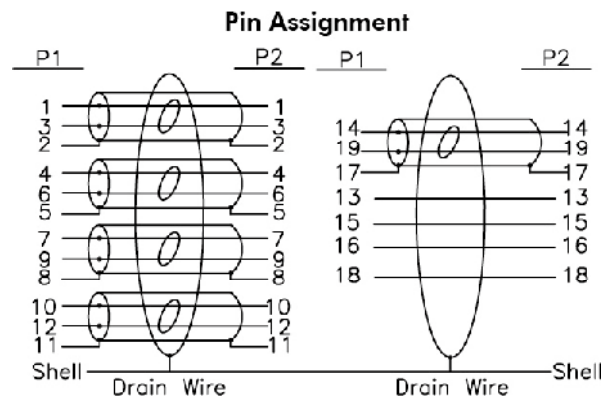


Art No. CHB3101 to CHB3110

## HDMI/DVI Cable, M/M, Black



**DVI** Our DVI to HDMI cable is specially designed for connecting your computers DVI output into your hi-def Plasma or LCD TV. We use premium grade material for our cable components and jackets. Our gold plated connectors ensure better connectivity, signal strength and cable-life longevity. Our DVI to HDMI cables are bi-directional, so you can send a signal from HDMI to DVI too. Set up your Multimedia Center like a professional, with the high quality cables you expect from us.



\* The specifications and pictures are subject to change without notice.  
 \*All trade names referenced are the registered trademark of their respective owners.





Art No. CHB3101 to CHB3110

## HDMI/DVI Cable, M/M, Black

### Specification:

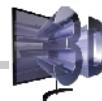
- HDMI to DVI Cable, Gold plated, length from 1M to 10M
- UL20276 (28AWG\*IPR+EAM)\*5C+28AWG\*4C+AEB OD:7.3MM Black
- HDMI Male 19P Solder Type, Insulation: Black, Gold Plated
- Transparent PE
- PVC 65P Color: Black
- HDMI Transparent Dust Cap
- PVC 45P Color: Blue

### Electrical Test:

1. 100% Test (Open, Short, Mis Wire)
2. Contact Resistance: 2 ohm max.
3. Insulation Resistance: 10M ohm min.
4. Hi-Pot Test: DC 300V/10ms

### Packaging Information:

Model Name	L	T	Q'ty	Carton Dimension	EAN Code
CHB3101	100cm	2cm	20pcs	420x340x270 mm	4260113573006
CHB3102	200cm	3cm	20pcs	420x340x270 mm	4260113573013
CHB3103	300cm	4cm	20pcs	420x340x270 mm	4260113573020
CHB3105	500cm	5cm	20pcs	420x340x270 mm	4260113573037
CHB3110	1,000cm	10cm	10pcs	490x440x220 mm	4260113573044



\* The specifications and pictures are subject to change without notice.  
\*All trade names referenced are the registered trademark of their respective owners.



RoHS compliant