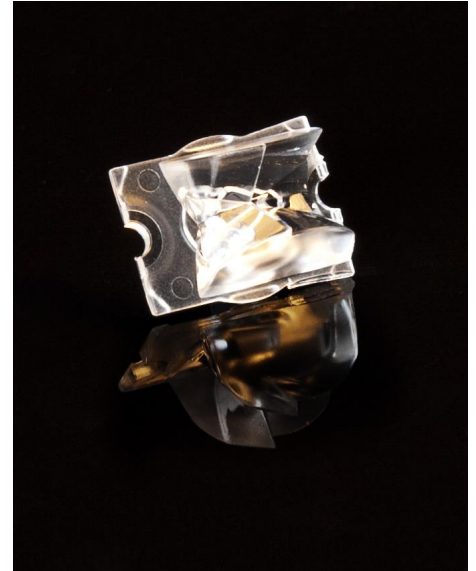


## DETAILS

<b>Product Number</b>	CA12087_STRADA-FW
<b>Family</b>	Strada-Forward
<b>Type</b>	Assembly
<b>Color</b>	clear
<b>Diameter</b>	15.4 x 19.6 mm
<b>Height</b>	10.8 mm
<b>Style</b>	rectang
<b>Optic Material</b>	PMMA
<b>Holder Material</b>	
<b>Fastening</b>	screw, pin, tape
<b>Status</b>	ready
<b>ROHS Compliant</b>	Yes
<b>Date Updated</b>	24/04/2014

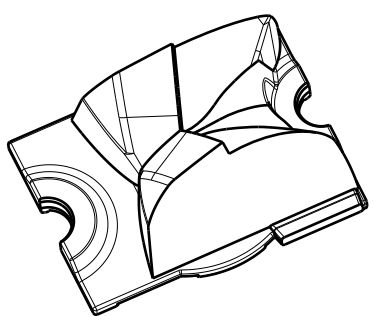


## OPTICAL PROPERTIES

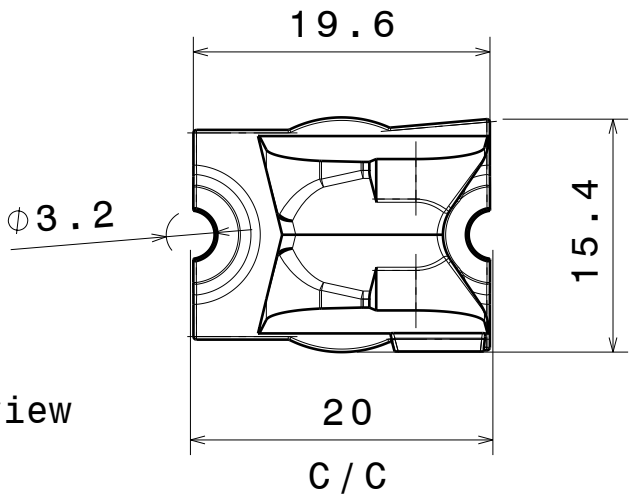
LED	Viewing Angle	Light Beam	Efficiency	cd/lm	Connector
XM-L2	Asym deg	Asymmetric	94 %	0.700	-
Z5M1/Z5M2	Asymmetric deg	Asymmetric	94 %	0.900	-
LH351Z	Asym deg	Asymmetric	94 %	0.970	-
LUXEON TX	Asymmetric deg	Asymmetric	93 %	0.830	-
XP-G2	Asym deg	Asymmetric	93 %	0.900	-
LUXEON T	Asym deg	Asymmetric	91 %	0.841	-
XP-E	Asymmetric deg	Asymmetric	92 %	-	-
XP-G	Asymmetric deg	Asymmetric	92 %	-	-
LUXEON Rebel	Asymmetric deg	Asymmetric	92 %	-	-
LUXEON Rebel ES	Asymmetric deg	Asymmetric	92 %	-	-
NCSxx19A	Asymmetric deg	Asymmetric	92 %	-	-
NVSxx19A	Asymmetric deg	Asymmetric	92 %	sim: 0.000	-
Oslon SSL 80	Asymmetric deg	Asymmetric	92 %	-	-
Z5	Asymmetric deg	Asymmetric	92 %	-	-
XT-E	Asymmetric deg	Asymmetric	sim: 90 %	sim: 0.000	-
XP-L	Asymmetric deg	Asymmetric	93 %	0.670	-
H35C0 (LEMWA33)	Asymmetric deg	Asymmetric	sim: 88 %	0.880	-
Oslon SSL 150	Asymmetric deg	Asymmetric	92 %	-	-
XM-L	Asymmetric deg	Asymmetric	92 %	sim: 0.000	-
LUXEON Z ES	Asymmetric deg	Asymmetric	91 %	0.970	-
H35B0 (LEMWA32)	Asymmetric deg	Asymmetric	91 %	1.000	-

D C B A

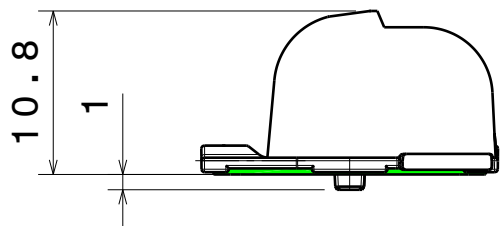
4



Isometric view



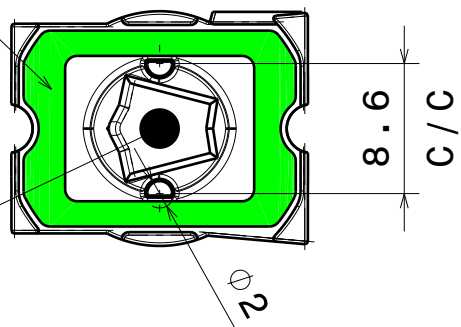
Top view



Front view

Tape 0.4mm

Led position



Bottom view

**MATERIALS**  
 Lens: PMMA  
 Colour: Clear

3

2

Tolerances if not otherwise shown  
 According to DIN ISO 2768-1  
 Linear measures:  
 Up to 30mm class M, otherwise class C.  
 According to DIN ISO 2768-2  
 Form and position: class L

**LEDiL** Ledil Oy  
 Salorankatu 10  
 FIN 24240 SALO  
 Finland

THIRD ANGLE PROJECTION:

DRAWING TITLE  
**STRADA - FW**

This drawing is the property of LEDiL Oy. It may not be reproduced, copied or communicated without a written agreement with LEDiL Oy."

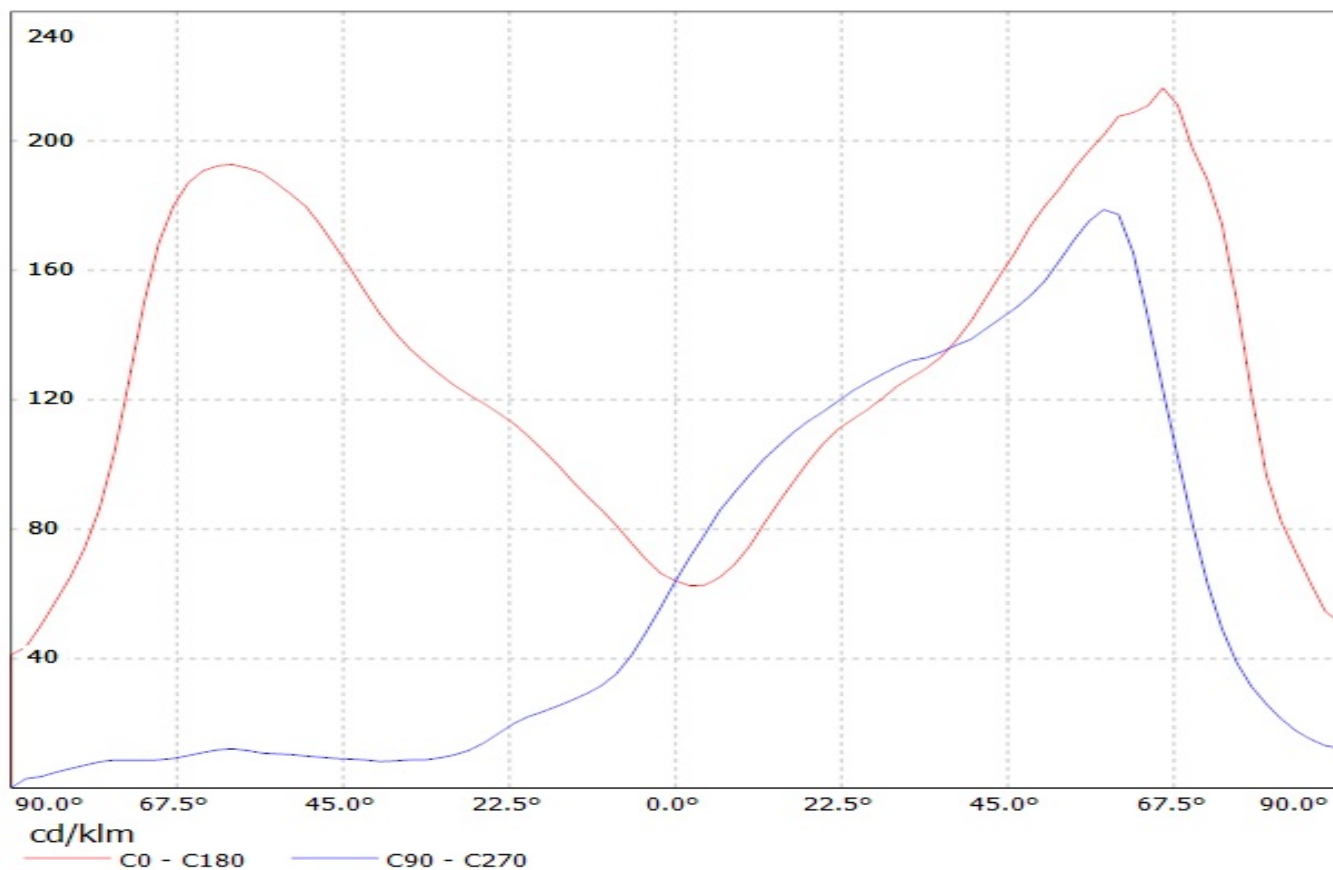
SIZE	PART NUMBER
A4	CA12087

SCALE	2:1	WEIGHT	-	SHEET	1/1
-------	-----	--------	---	-------	-----

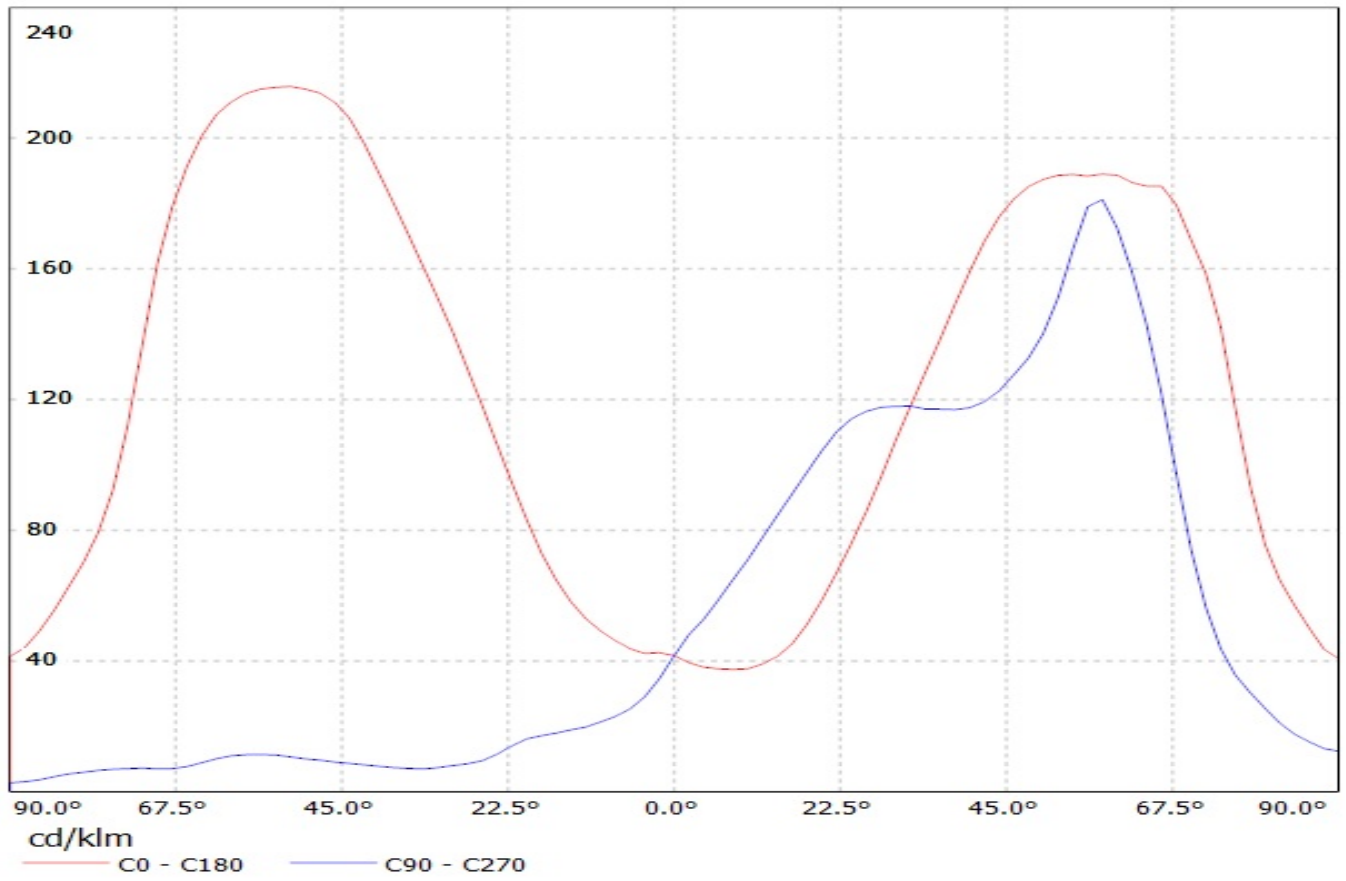
1

D A

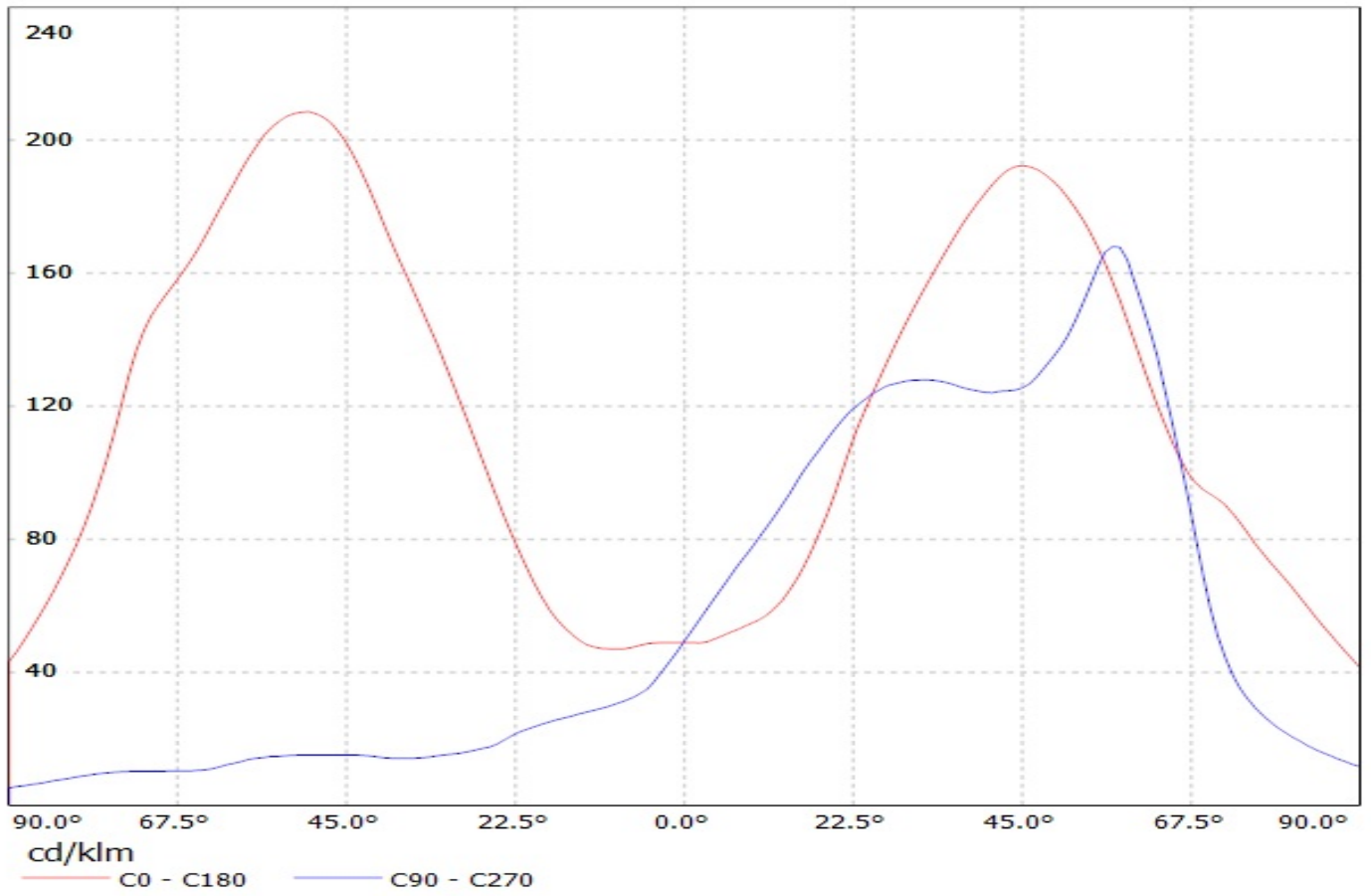
Luminaire: LEDil Oy CA12087\_STRADA-FW\_(XM-L2) Efficiency=94%  
Lamps: 1 x Cree XM-L2 (XMLBWT-0-7B4-T30-0L-0001) 91lm @ 250mA CCT=3200K P=0.7W I=250mA



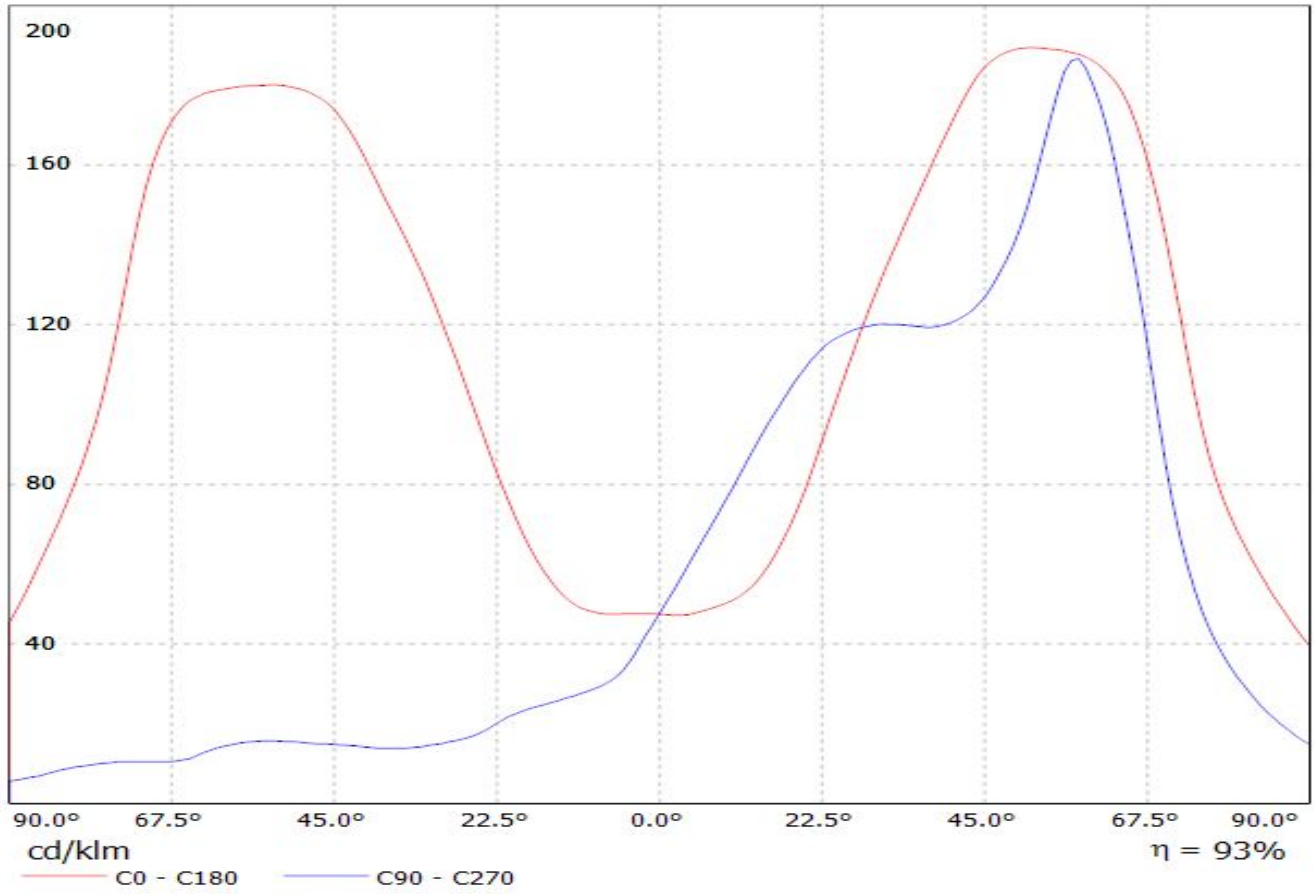
Luminaire: LEDil Oy CA12087\_STRADA-FW\_(Z5M1) Efficiency=94%  
Lamps: 1 x Seoul Z5M1 (SZ5M1-W0-C8/W1-A5-G) 108lm @ 250mA CCT=9100K P=0.8W I=250mA



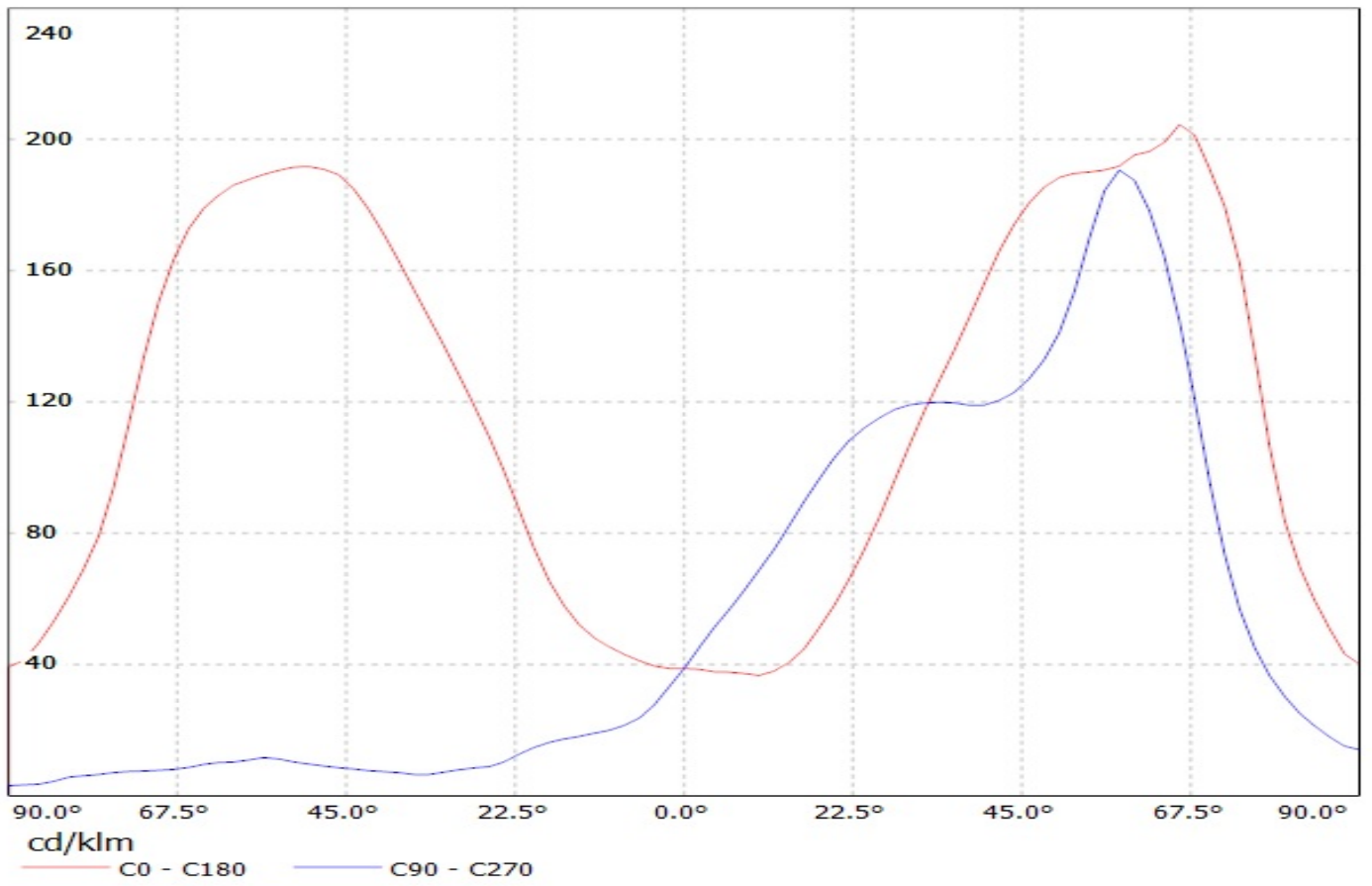
Luminaire: LEDiL Oy CA12087\_STRADA-FW\_(LH351Z) Eff.93.8%  
Lamps: 1 x SAMSUNG\_LH351Z\_90.0548lm@250mA\_P=0.747026W\_I=249.9mA



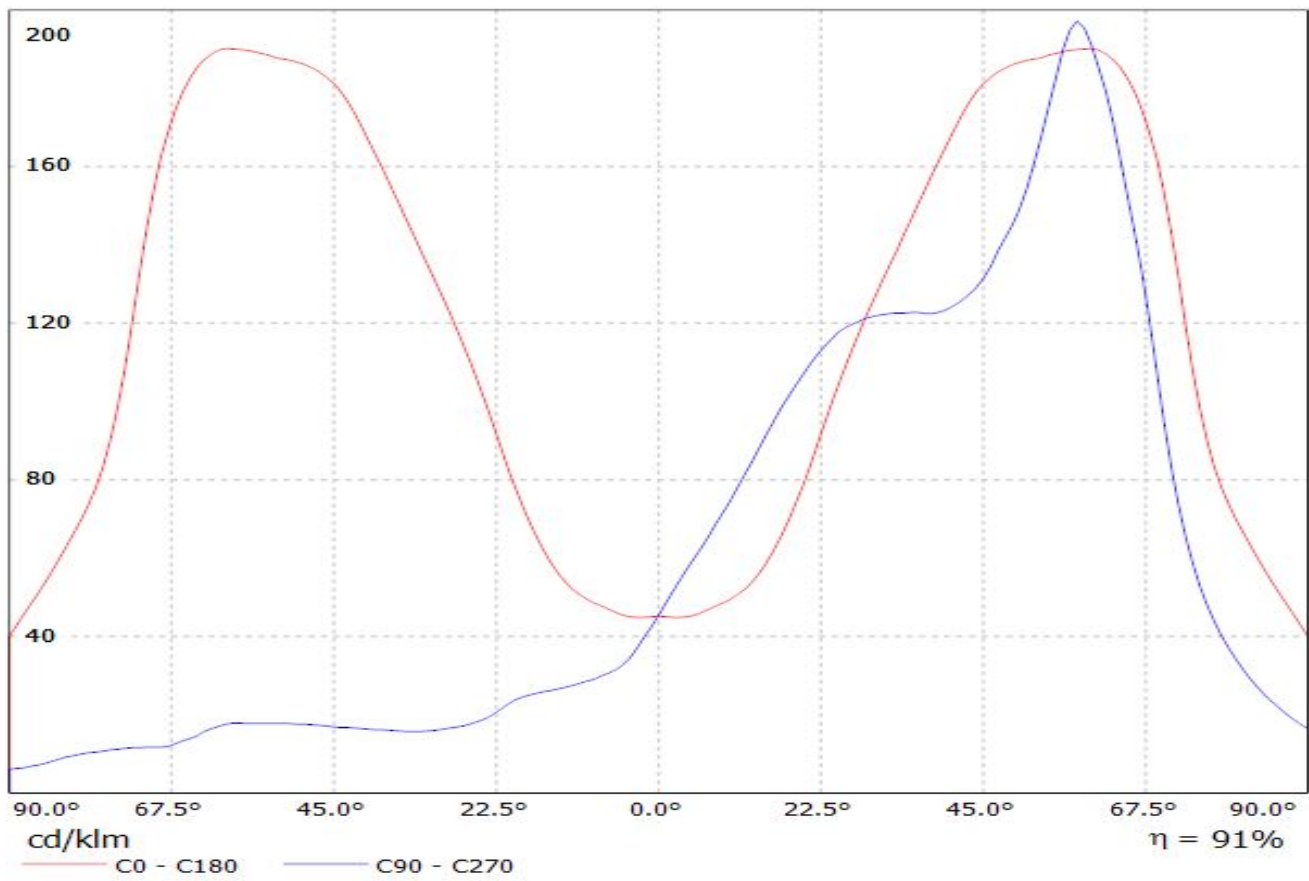
Luminaire: LEDiL Oy CA12087\_STRADA-FW\_(Luxeon\_TX) Eff.93.2%  
Lamps: 1 x Luxeon\_TX\_(L1T2-3585)\_80.2531lm@250mA\_CCT=3500K\_P=0.730933W\_I=249.9mA



Luminaire: LEDil Oy CA12087\_STRADA-FW\_(XP-G2) Efficiency=93%  
Lamps: 1 x Cree XP-G2 (XPGBWT-L1-0000-00FE4) 101lm @ 250mA CCT=6600K P=0.7W I=250mA

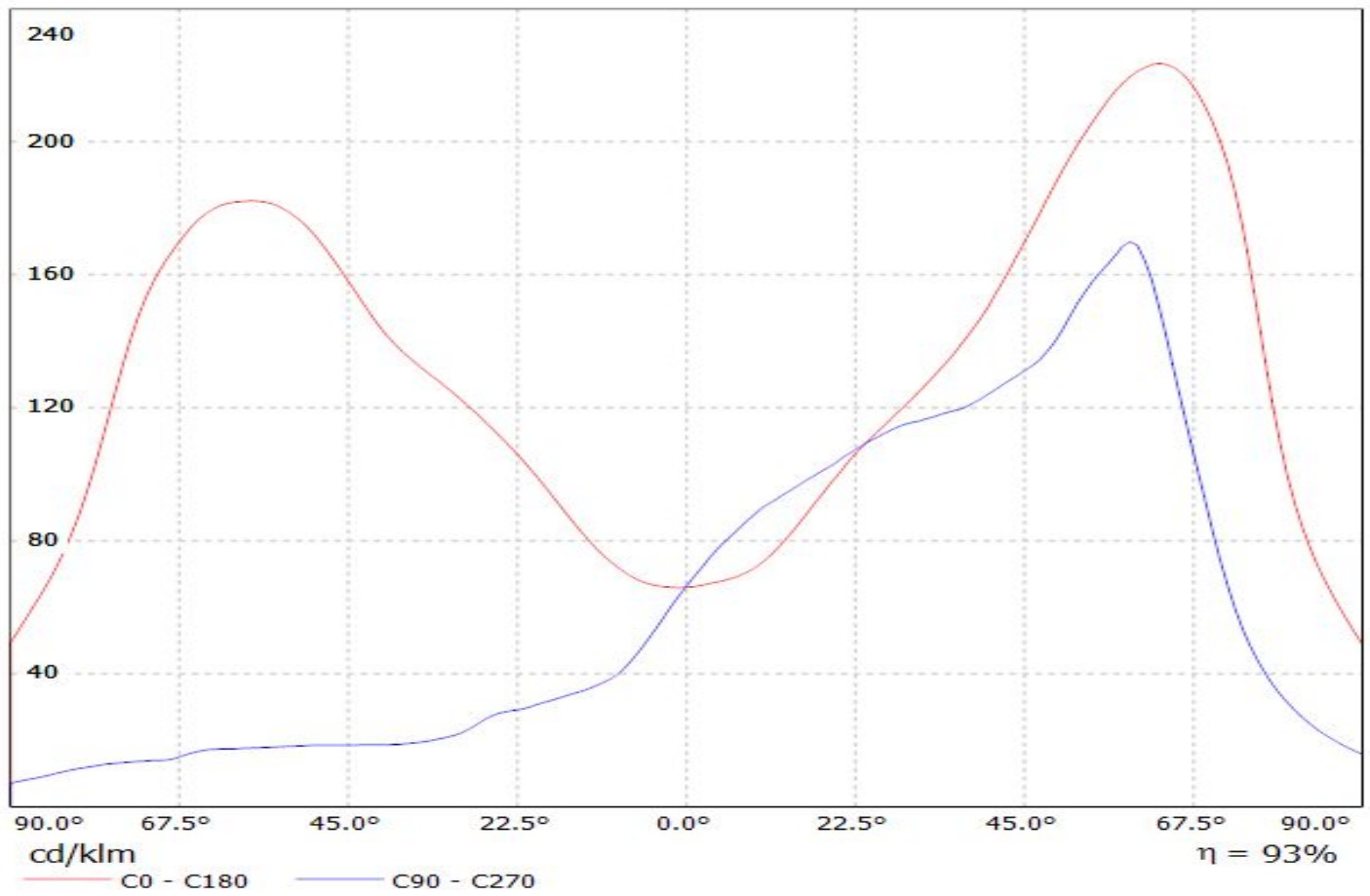


Luminaire: LEDiL Oy CA12087\_STRADA-FW\_(Luxeon\_T)  
Lamps: 1 x Luxeon\_T\_(LXH8-FW30-3)\_70lm@250mA P=0.8W I=249.9mA

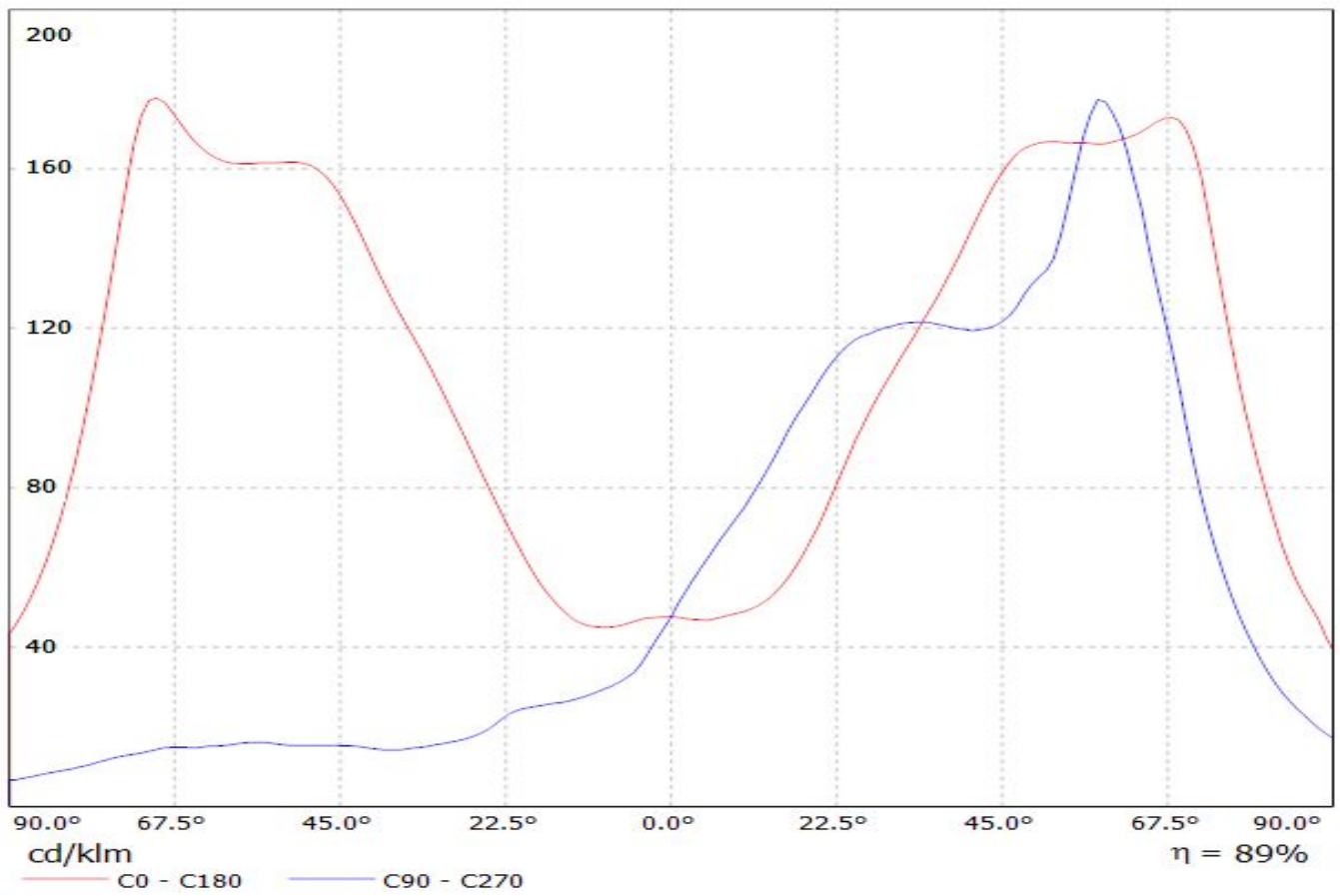




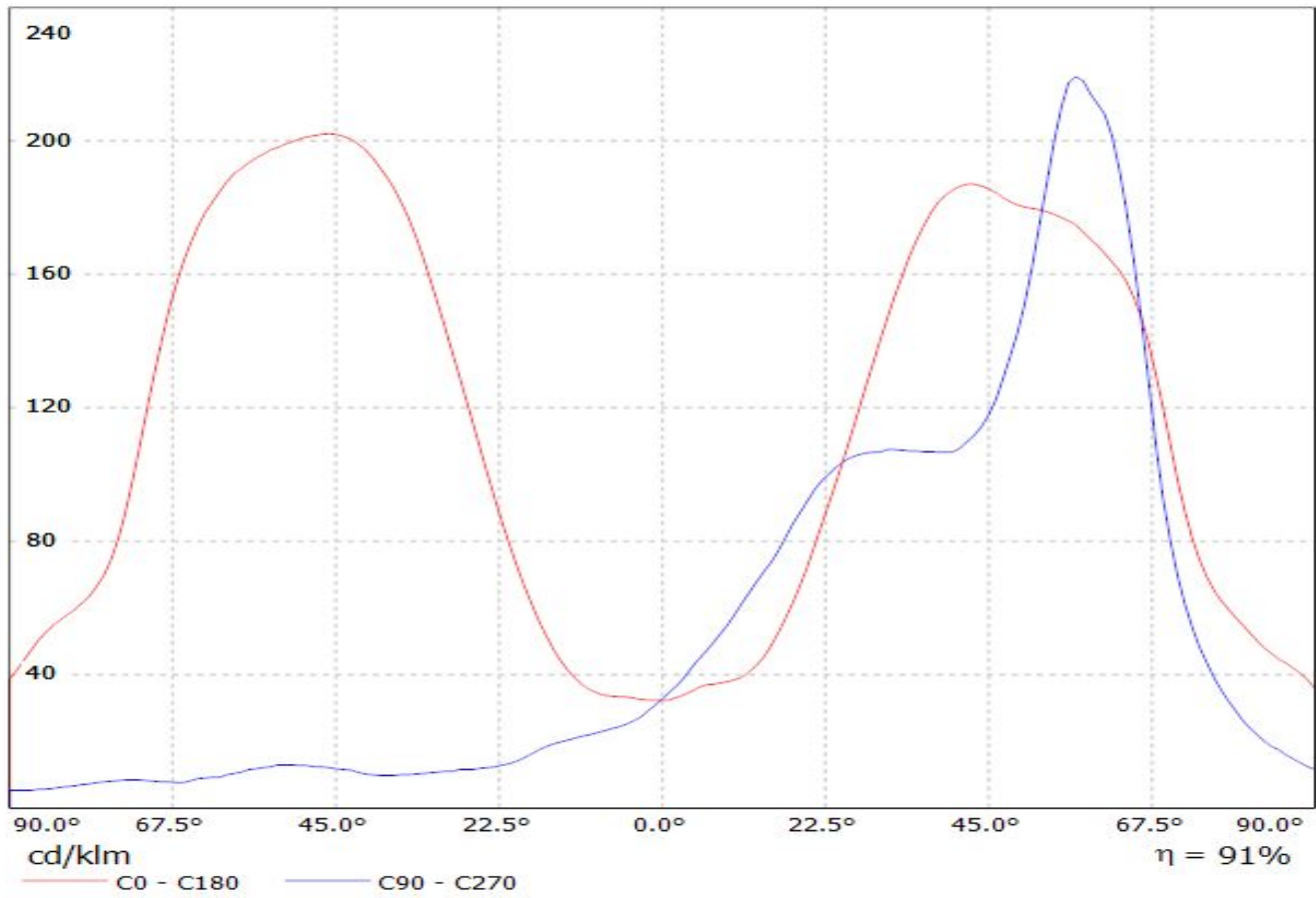
Luminaire: LEDiL Oy CA12087\_STRADA-FW\_(XP-L)  
Lamps: 1 x Cree\_XP-L\_125.481lm@250mA\_P=0.737584W\_I=249.9mA



Luminaire: LEDiL Oy CA12087\_STRADA-FW\_(LG3535) Eff. 88,2%  
Lamps: 1 x LG Ceramic 3535 PKG (95lm@250mA)

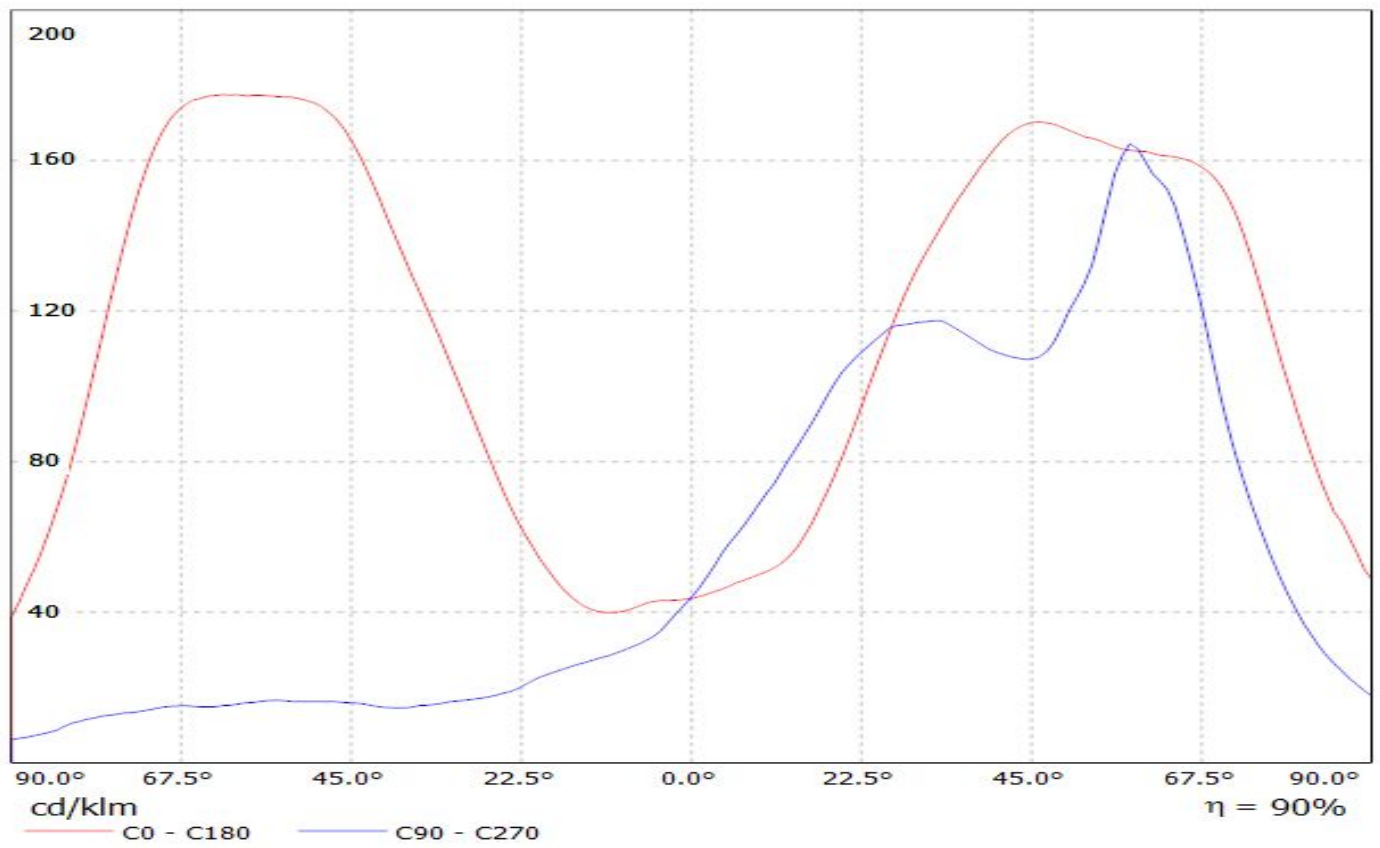


Luminaire: LEDiL Oy CA12087\_STRADA-FW\_(Luxeon\_Z\_ES) Eff.90.6%  
Lamps: 1 x Luxeon\_Z\_ES\_(LXZ2-3090)\_50.8881lm@250mA\_P=0.730433W\_I=249.9mA



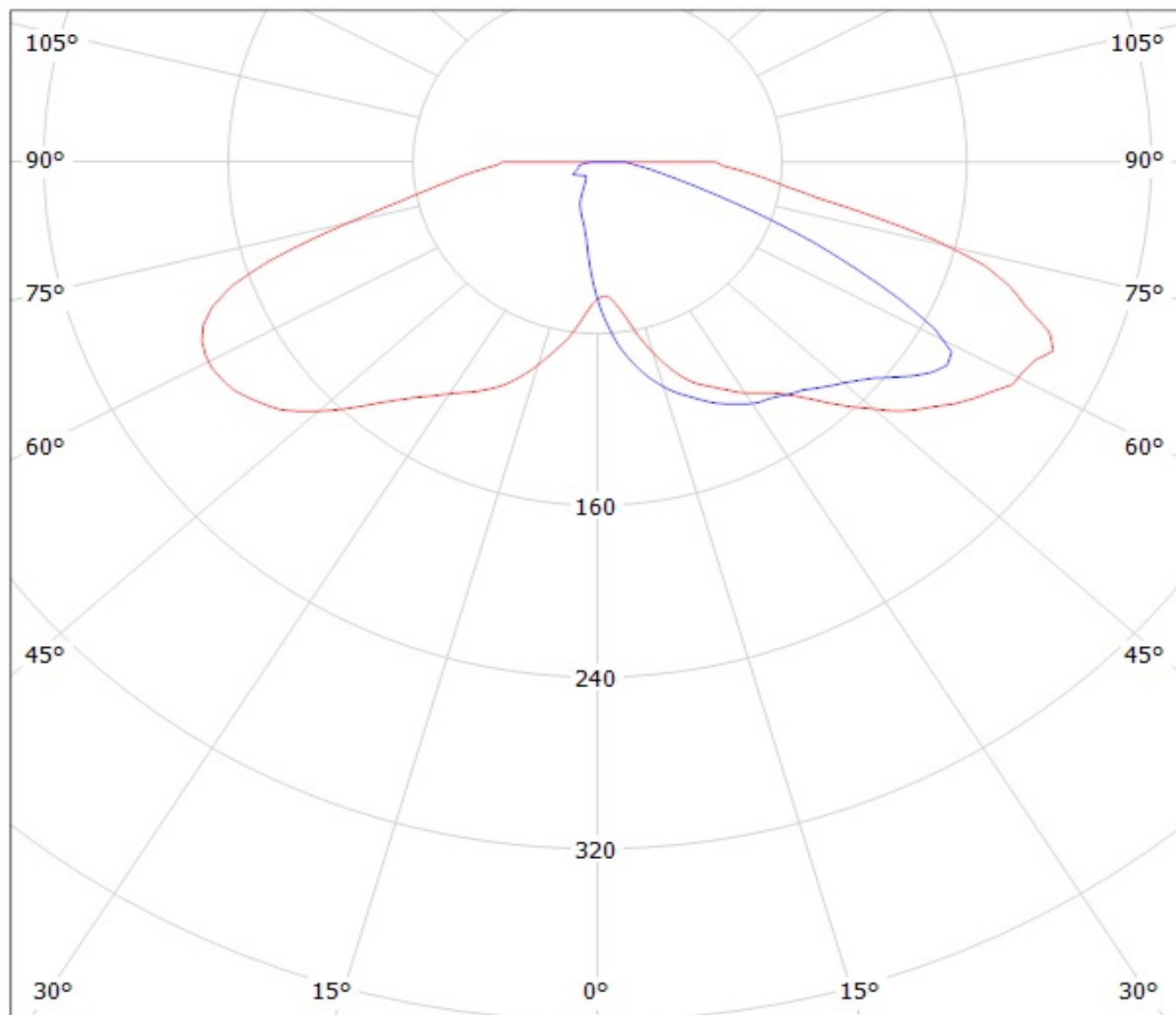
# LEDiL Oy CA12087\_STRADA-FW\_(LG3535\_2W) Eff.90.3% / LDC (Linear)

Luminaire: LEDiL Oy CA12087\_STRADA-FW\_(LG3535\_2W) Eff.90.3%  
Lamps: 1 x LG3535\_2W (97.3629lm@250mA)



Luminaire: LEDil Oy CA12087\_STRADA-FW\_(XM-L2) Efficiency=94%

Lamps: 1 x Cree XM-L2 (XMLBWT-0-7B4-T30-0L-0001) 91lm @ 250mA CCT=3200K P=0.7W I=250mA



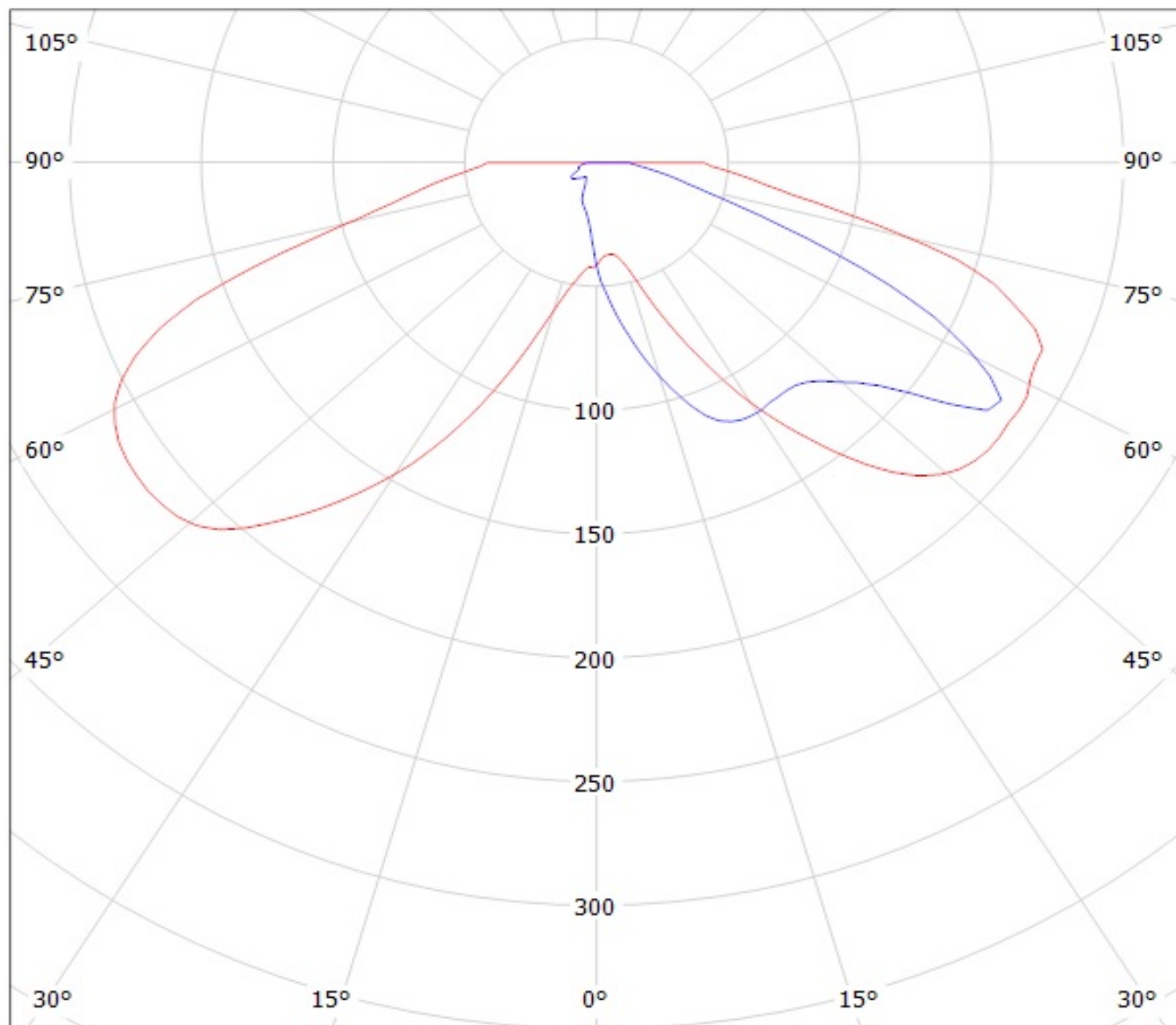
cd/klm

— C0 - C180

— C90 - C270

Luminaire: LEDil Oy CA12087\_STRADA-FW\_(Z5M1) Efficiency=94%

Lamps: 1 x Seoul Z5M1 (SZ5M1-W0-C8/W1-A5-G) 108lm @ 250mA CCT=9100K P=0.8W I=250mA

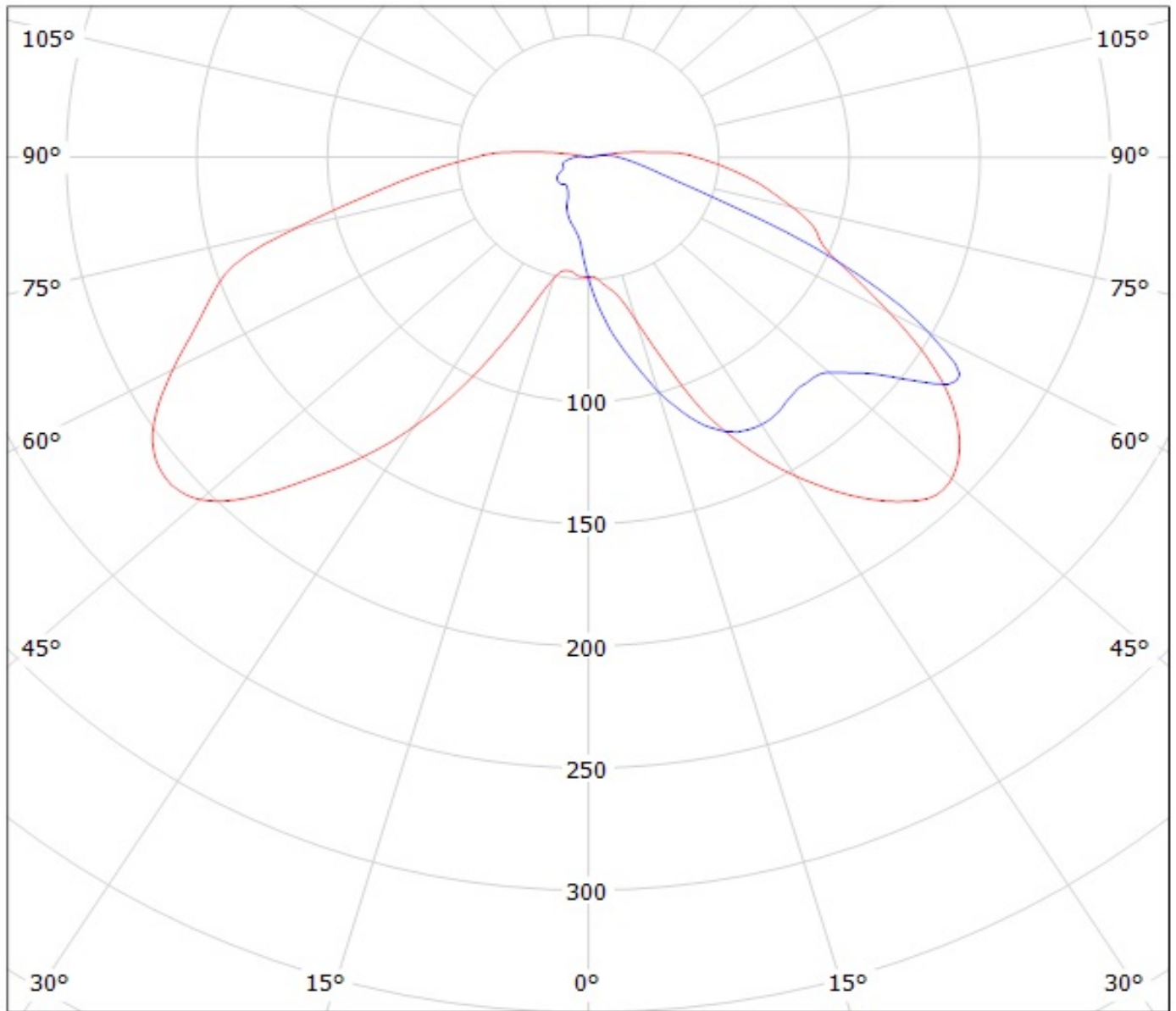


cd/klm

— C0 - C180

— C90 - C270

Luminaire: LEDiL Oy CA12087\_STRADA-FW\_(LH351Z) Eff.93.8%  
Lamps: 1 x SAMSUNG\_LH351Z\_90.0548lm@250mA\_P=0.747026W\_I=249.9mA



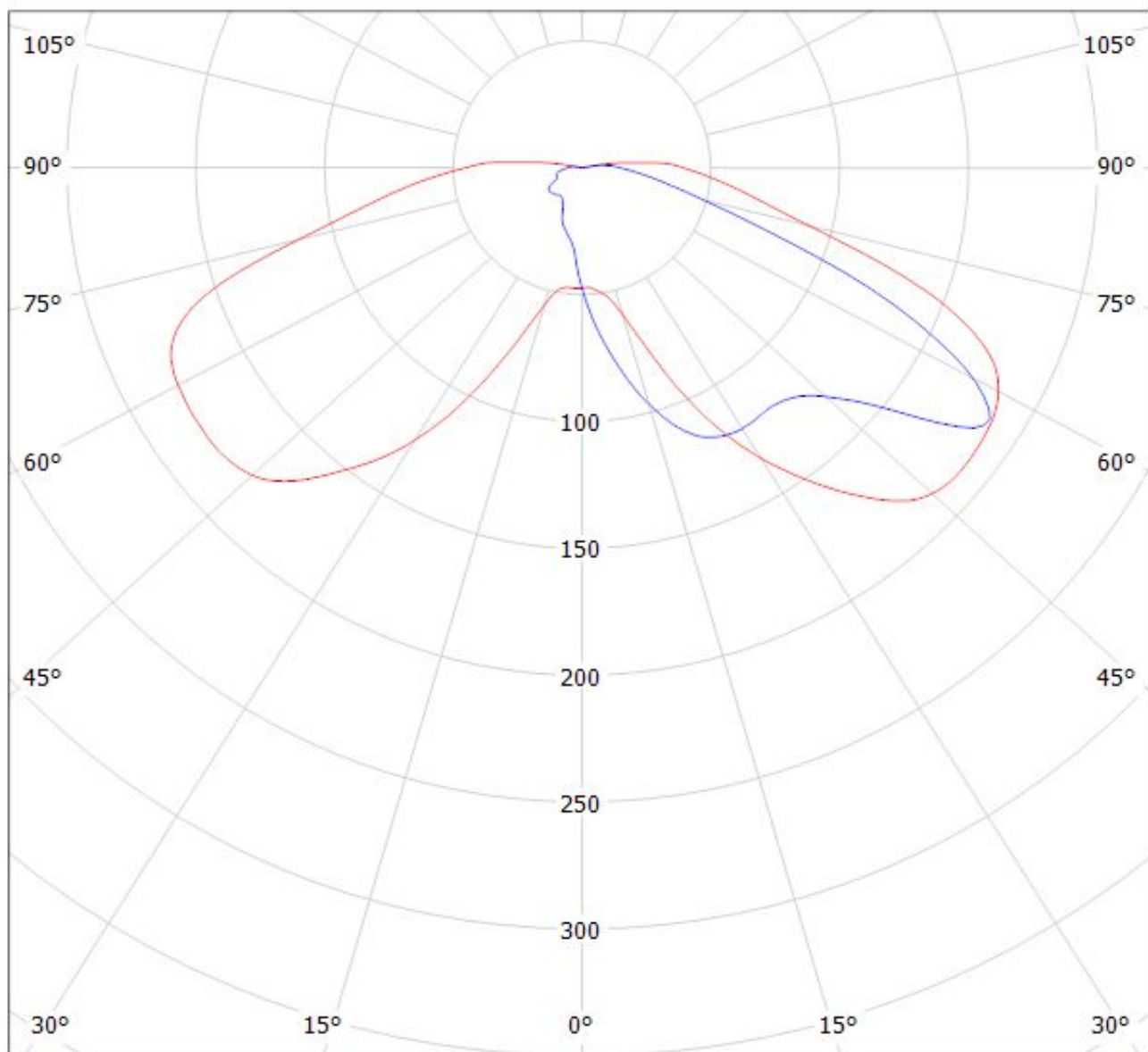
cd/klm

— C0 - C180    — C90 - C270



Luminaire: LEDiL Oy CA12087\_STRADA-FW\_(Luxeon\_TX) Eff.93.2%

Lamps: 1 x Luxeon\_TX\_(L1T2-3585)\_80.2531lm@250mA\_CCT=3500K\_P=0.730933W\_I=249.9mA



cd/klm

— C0 - C180

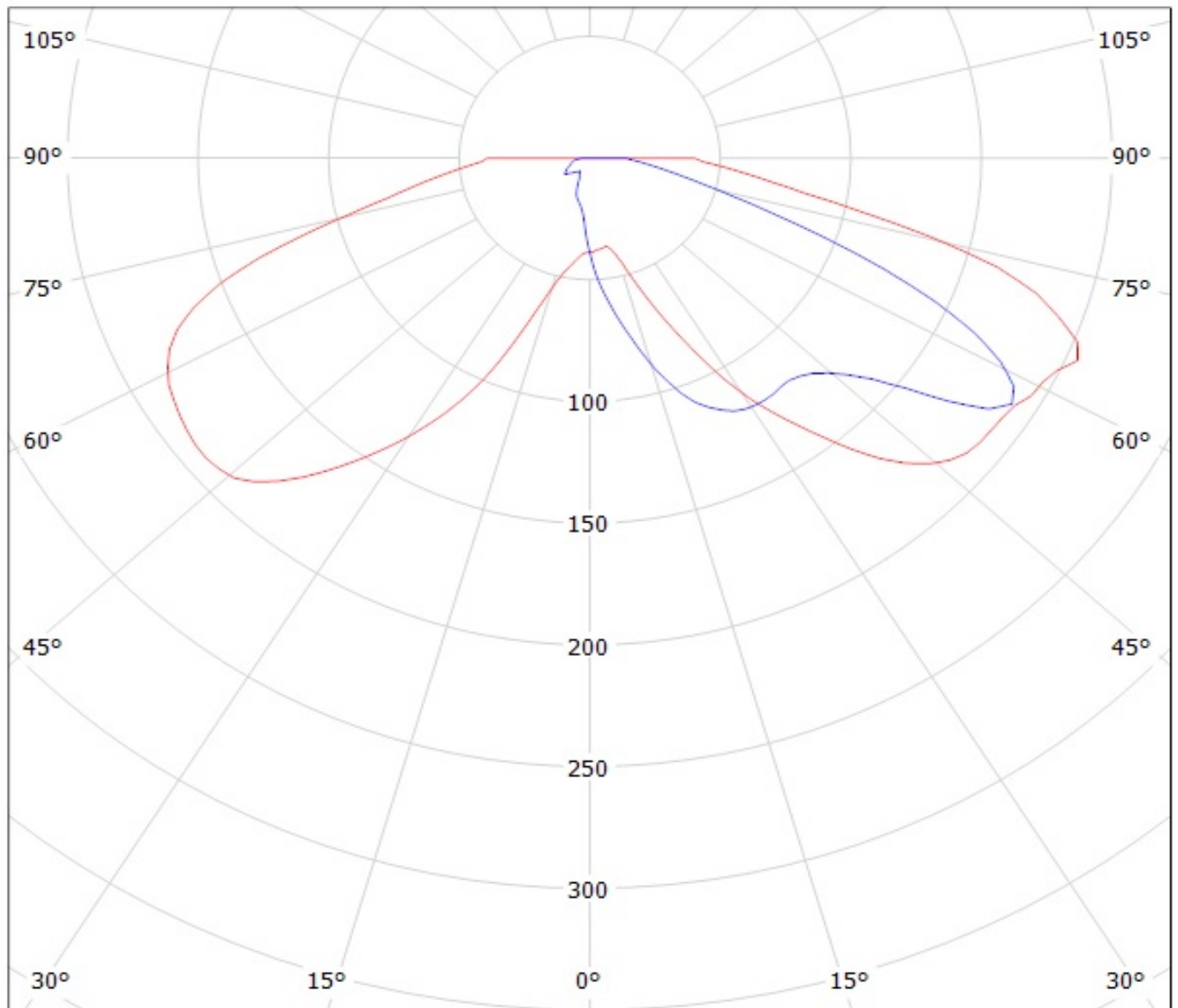
— C90 - C270

η = 93%



Luminaire: LEDil Oy CA12087\_STRADA-FW\_(XP-G2) Efficiency=93%

Lamps: 1 x Cree XP-G2 (XPGBWT-L1-0000-00FE4) 101lm @ 250mA CCT=6600K P=0.7W I=250mA

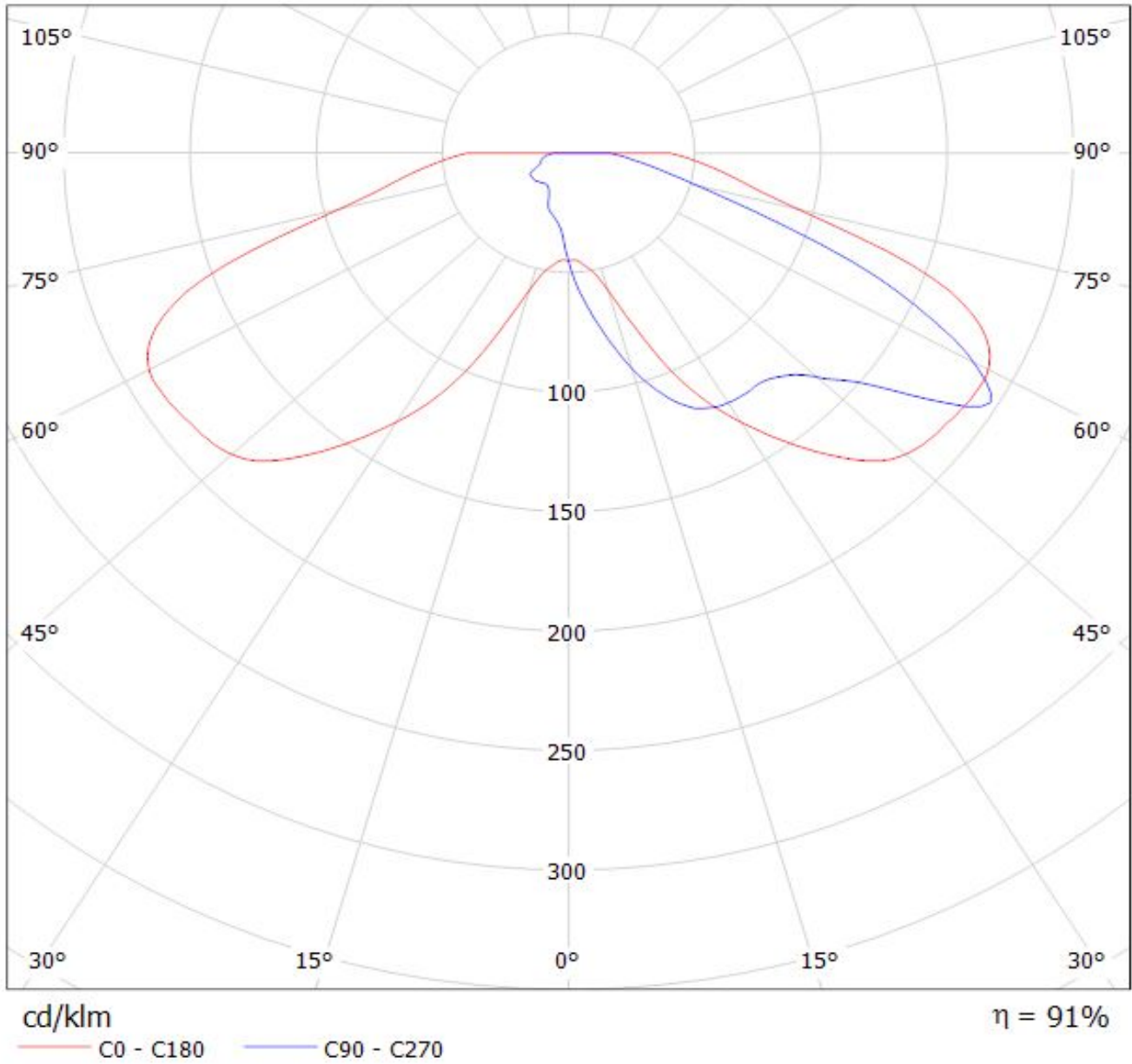


cd/klm

— C0 - C180

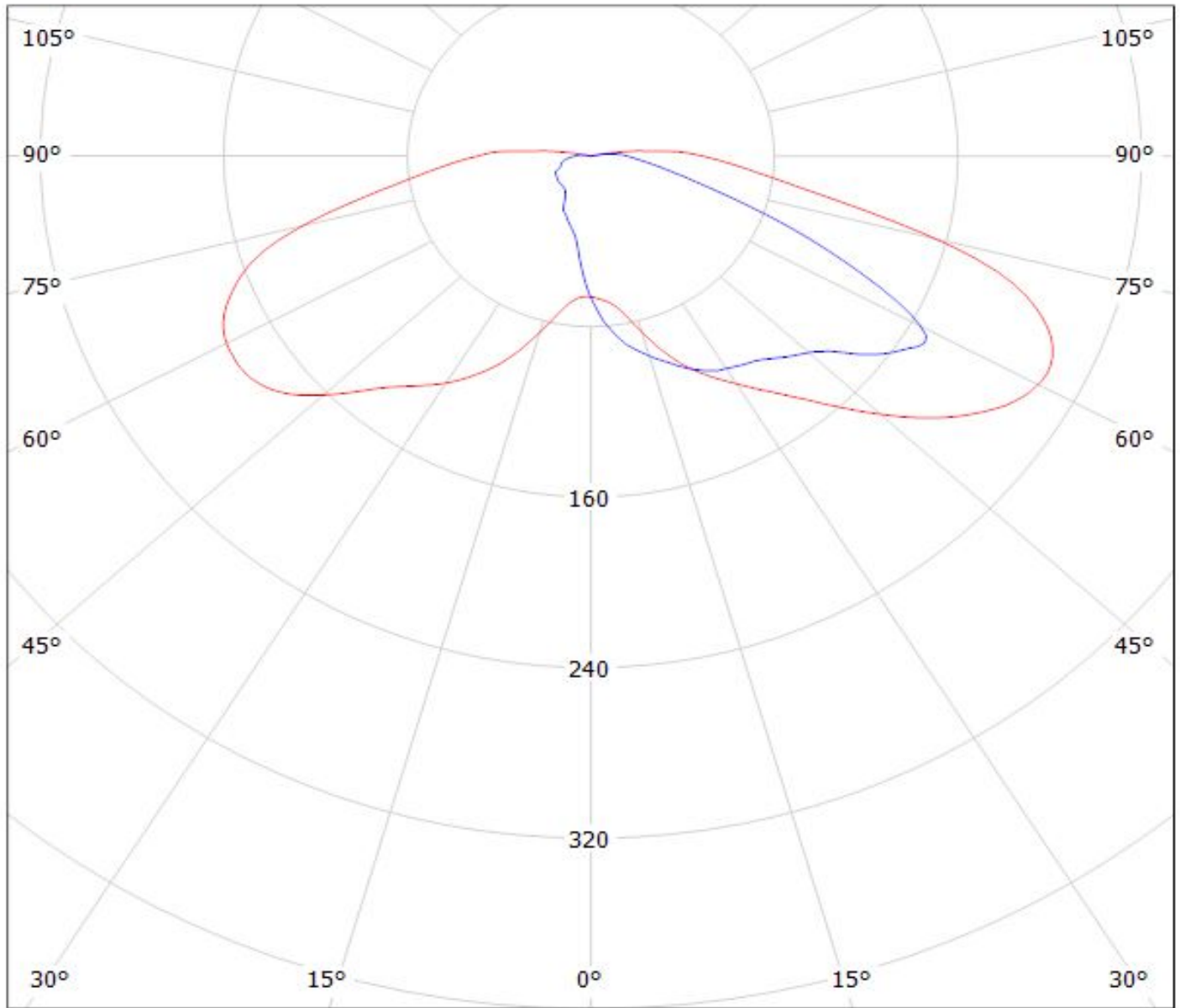
— C90 - C270

Luminaire: LEDiL Oy CA12087\_STRADA-FW\_(Luxeon\_T)  
Lamps: 1 x Luxeon\_T\_(LXH8-FW30-3)\_70lm@250mA P=0.8W I=249.9mA



Luminaire: LEDiL Oy CA12087\_STRADA-FW\_(XP-L)

Lamps: 1 x Cree\_XP-L\_125.48lm@250mA\_P=0.737584W\_I=249.9mA



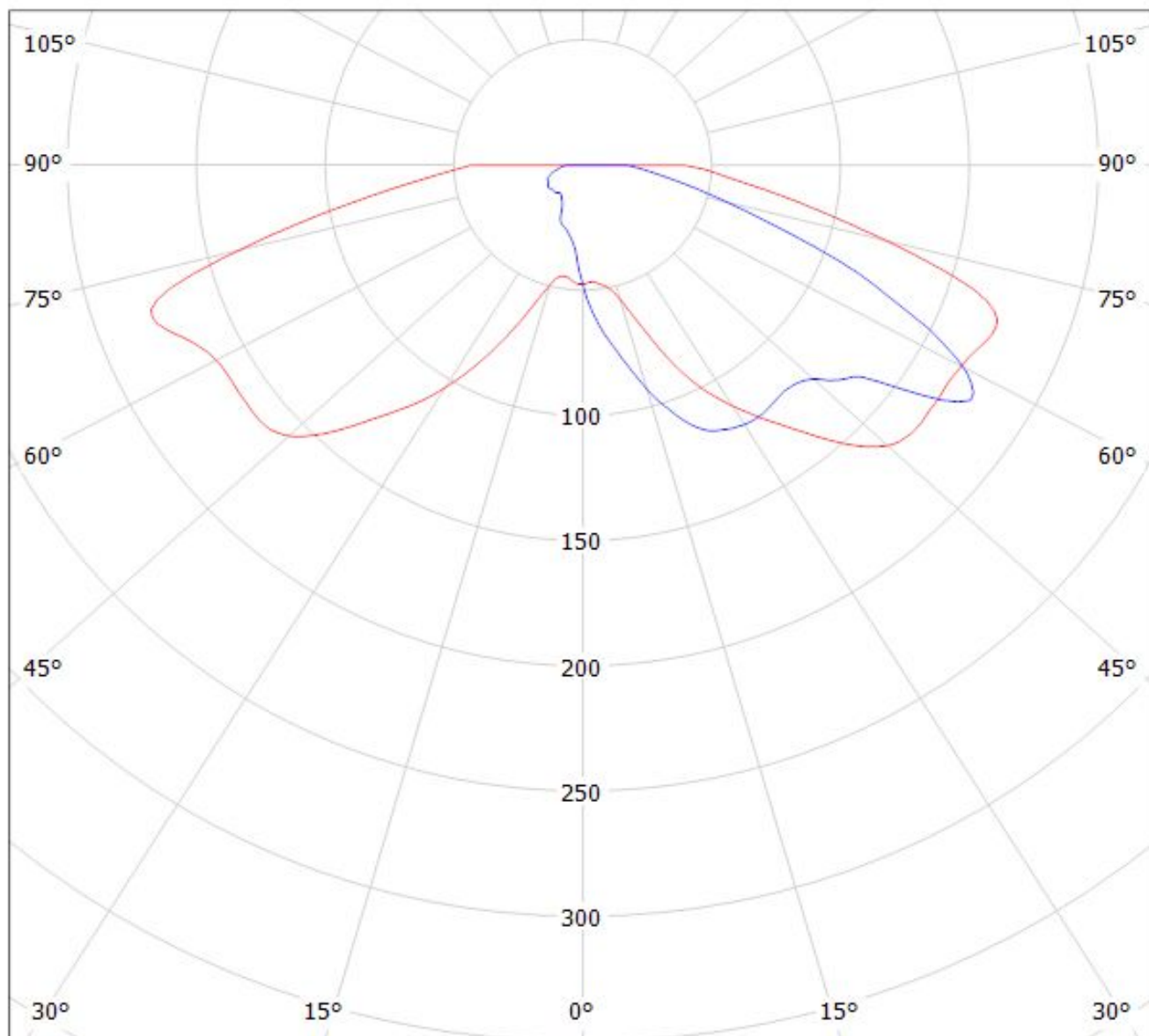
cd/klm

— C0 - C180

— C90 - C270

$\eta = 93\%$

Luminaire: LEDiL Oy CA12087\_STRADA-FW\_(LG3535) Eff. 88,2%  
Lamps: 1 x LG Ceramic 3535 PKG (95lm@250mA)



cd/klm

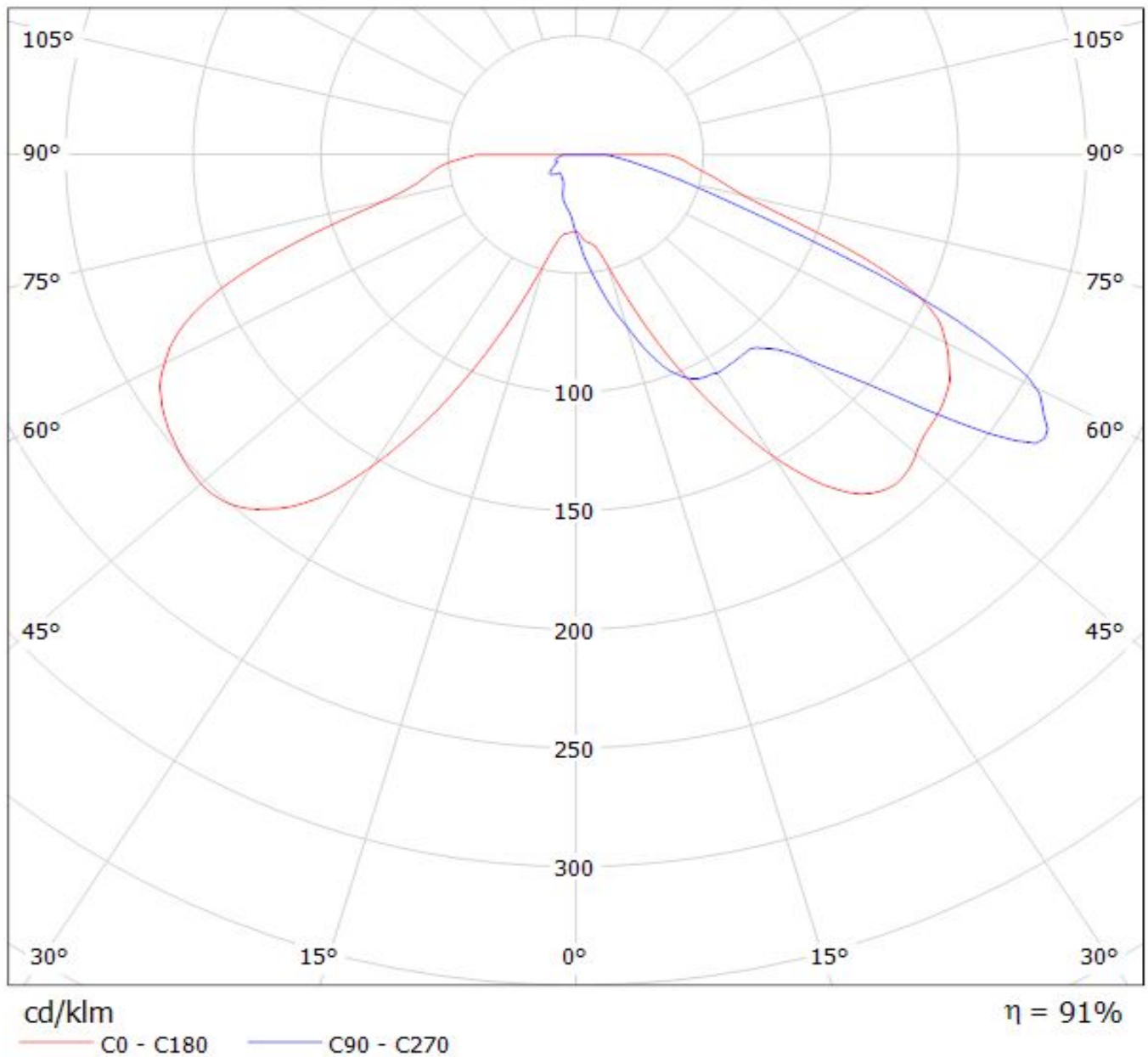
— C0 - C180

— C90 - C270

$\eta = 89\%$

Luminaire: LEDiL Oy CA12087\_STRADA-FW\_(Luxeon\_Z\_ES) Eff.90.6%

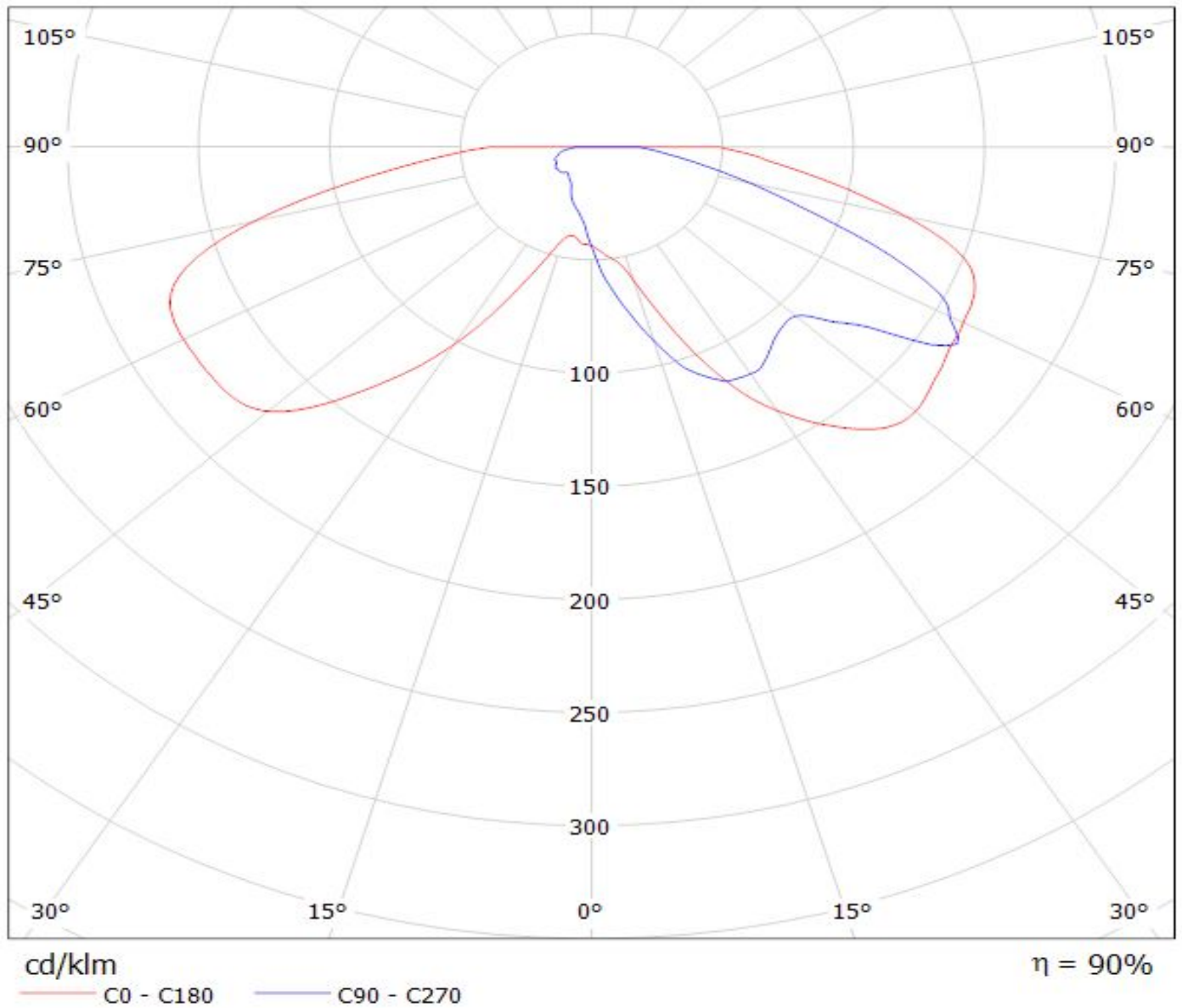
Lamps: 1 x Luxeon\_Z\_ES\_(LXZ2-3090)\_50.8881lm@250mA\_P=0.730433W\_I=249.9mA



# LEDiL Oy CA12087\_STRADA-FW\_(LG3535\_2W) Eff.90.3% / LDC (Polar)

Luminaire: LEDiL Oy CA12087\_STRADA-FW\_(LG3535\_2W) Eff.90.3%

Lamps: 1 x LG3535\_2W (97.3629lm@250mA)



**NOTE: The typical divergence will be changed by different color, chip size and chip position tolerance. The typical total divergence is the full angle measured where the luminous intensity is half of the peak value.**