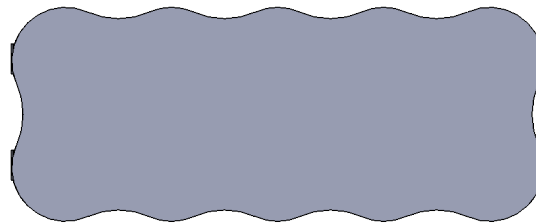
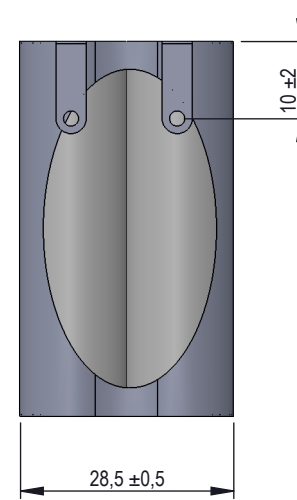
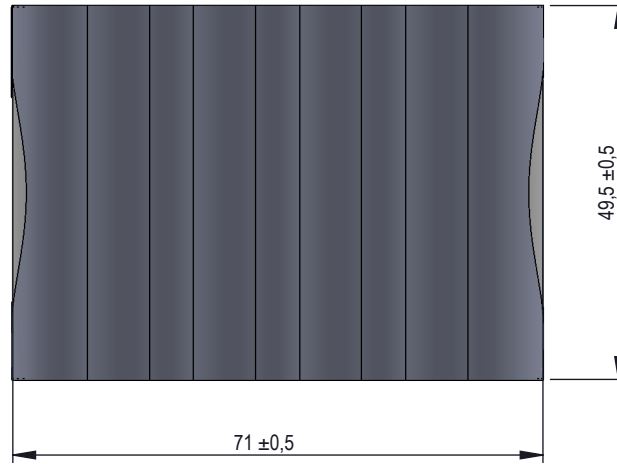
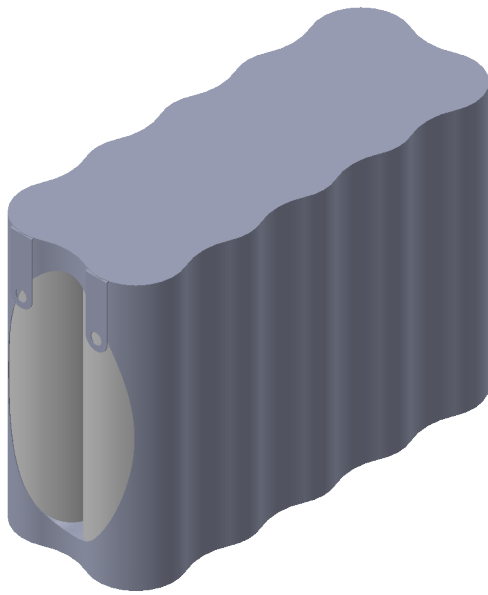
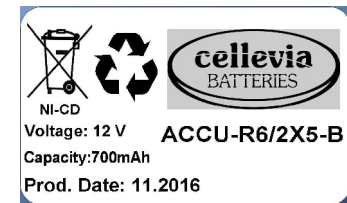



Specifications

| | | |
|--|-------------|--------------------------|
| Nominal Voltage [V] | | 12 |
| Typical capacity [mAh] | | 700 |
| Size [mm] | | According to the drawing |
| Typical charge [mA] | | 70 (16 hrs) |
| Rapid charge [mA] | | 700 (temp.20°C) |
| Standard continuous discharge current [mA] | | 2100 (temp. 20°C) |
| Charge temperature | Typical | 0°C do 50°C |
| Discharge temperature | Continous | -20°C do 60°C |
| Storage temperature | Recommended | 5°C do 25°C |



Label 50x30mm



| | | | | | |
|----------------------------|----------------------------|---|--|----------------------------|----------------------|
| Material/ Materiał: | Scale/ Skala: 1:1 | Format/ Format arkusza: A4 | Weight/ Masa: | Sheet/ Arkusz: / | Version/ Wersja: _ |
| Finishing/ Wykończenie : _ | Date/ Data: |  | | | Revision/ Rewizja: _ |
| Designed by/ Konstruował: | | | | | ERP system number: |
| Checked by/ Sprawdził: | | | | | 32934 |
| Approved by/ Zatwierdził: | | | | | |
| Update/ Aktualizował: | Update/ Data aktualizacji: | Date of implementation/ Data wykonania: | Product reference/ Nazwa: | Docum. number/ Nr rysunku: | |
| J. Dadacz | | 2016-11-28 | ACCU-R6/2X5-B VREAA700 12,00V 0,70Ah cyli | | |