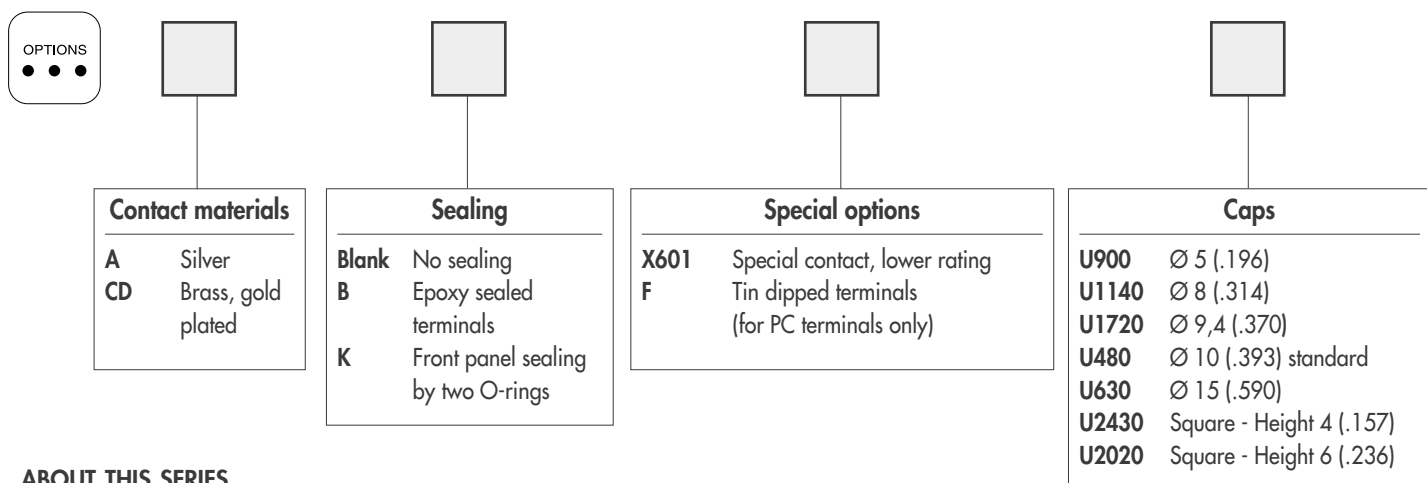
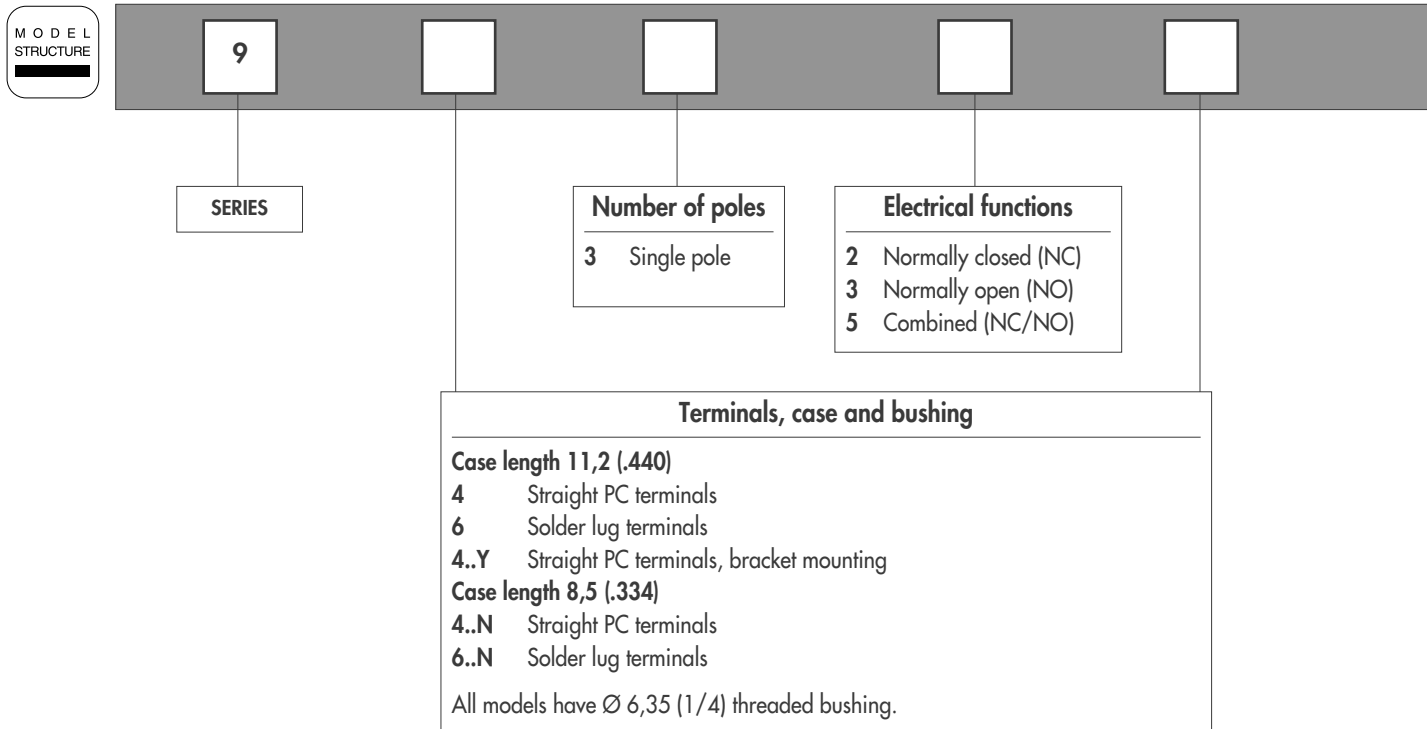


9000 SERIES

MOMENTARY PUSHBUTTON SWITCHES

Overview



ABOUT THIS SERIES

On the following pages, you will find successively :

- specifications
- model structure of switches
- their options in the same order as in above chart

Dimensions : first dimensions are in mm while inches are shown as bracketted numbers.



NOTICE : please note that not all combinations of above numbers are available. Refer to the following pages for further information.



Sealing boots are available to protect the switches against dust and water. They are presented in section N.



Mounting accessories : standard hardware supplied with all switches : 2 hex nuts 8 mm (.314) across flats and 1 lockwasher. Standard and special hardware available are presented in section N.



Packaging unit : 50 pieces, except for 9400Y (25 pieces)

9000 SERIES

MOMENTARY PUSHBUTTON SWITCHES

Specifications

ELECTRICAL SPECIFICATIONS

- Max. current/voltage rating with resistive load :
 - silver contact (A) : 0,3A 250VAC - 0,6A 125VAC - 1A 30VDC
 - gold plated contacts (CD) : 100mA 30VDC
- Initial contact resistance : 50 mΩ max.
- Insulation resistance : 1.000 MΩ min. at 500VDC
- Dielectric strength :
 - 1.000 Vrms 50 Hz min. between terminals
 - 1.500 Vrms 50 Hz min. between terminals and frame
- Electrical life : 250.000 cycles

MATERIALS

- Case : thermoplastique UL 94-V0
- Actuator : polyamide, glass filled
- Bushing : brass, nickel plated
- Contacts :
 - A** : silver
 - CD** : brass, gold plated
- Terminal seal : epoxy

GENERAL SPECIFICATIONS

- Total travel :

9600-9400-9400Y		9600N-9400N
Functions 3 and 5	Function 2	Function 3
1,3 mm	2 mm	0,9 mm

- Torque : 1,25 Nm (.922 Ft.lb) max. applied to nut
- Operating temperature : -30°C to +65°C

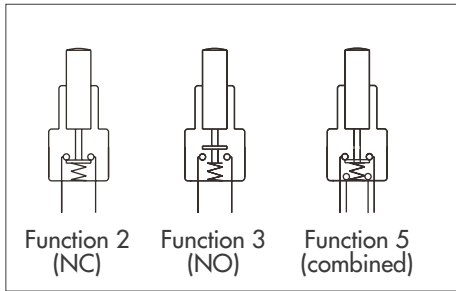
D

9000 SERIES

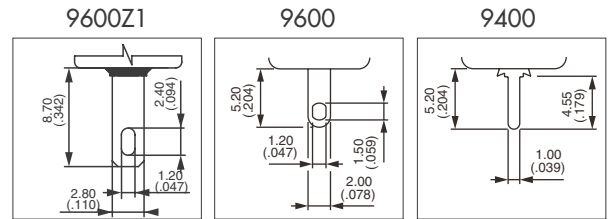
MOMENTARY PUSHBUTTON SWITCHES

Threaded bushing $\varnothing 6,35$ (1/4)

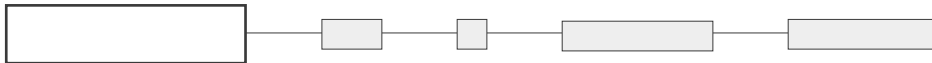
M O D E L
S T R U C T U R E



- Single pole
- Solder lug or straight PC terminals



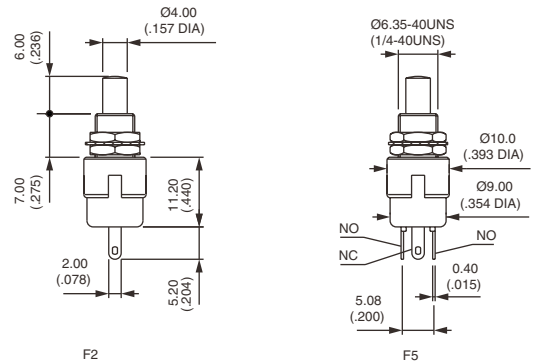
MODEL STRUCTURE



Solder lug terminals - case length 11,2 (.440) : 9600



9632		Normally Closed
9635		Combined function

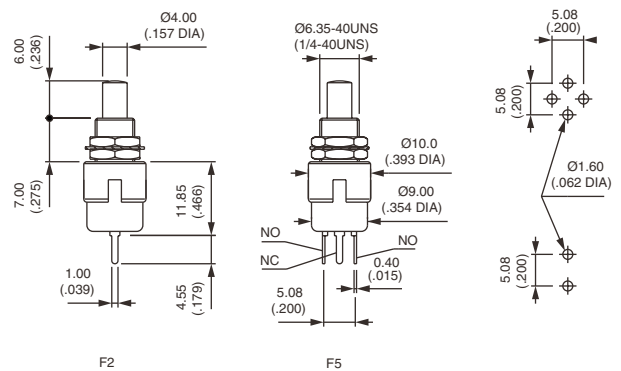


For Normally Open (function 3), see next page
Also available with quick-connect terminals : 9632Z1 or 9635Z1

Straight PC terminals - case length 11,2 (.440) : 9400



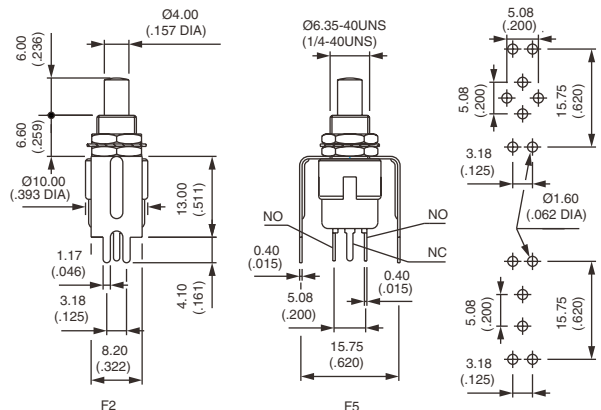
9432		Normally Closed
9433		Normally Open
9435		Combined function



Bracket mounting - case length 11,2 (.440) : 9400Y



9432Y		Normally Closed
9433Y		Normally Open
9435Y		Combined function



The bracket is not fastened to the switch.

9000 SERIES

MOMENTARY PUSHBUTTON SWITCHES

Threaded bushing $\text{\O} 6,35$ (1/4)

M O D E L
STRUCTURE

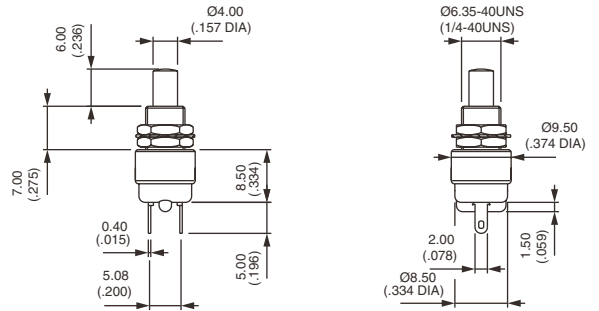
Solder lug terminals - case length 8,5 (.334) : 9600N



9633N



Normally Open



Also available with quick-connect terminals 2,8 x 0,5 mm : 9633NZ1

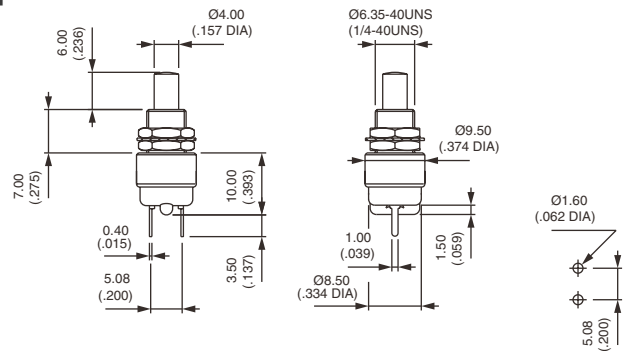
Straight PC terminals - case length 8,5 (.334) : 9400N



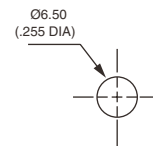
9433N



Normally Open



PANEL CUT-OUT



Bushing $\text{\O} 16$ (.630) - metal button : 9633•X1146



Silver contacts
9633AX1146

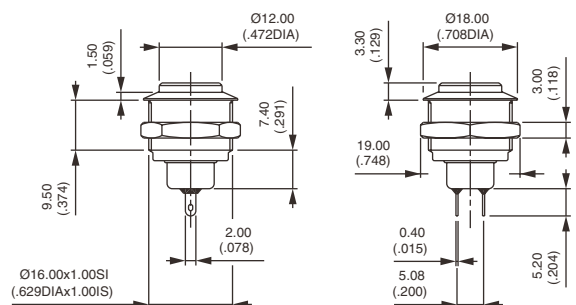


Normally open

Gold plated silver contacts
9633ADX1146



Normally open



Hex nut 19 (.748) across flats

Panel cut-out : $\text{\O} 16,2$ (.637)

Max. current/voltage rating. : 0,3A 250VAC - 1A 30VDC

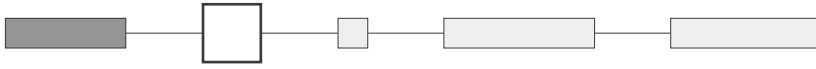
Epoxy sealed terminals. Options of the following pages not applicable.

9000 SERIES

MOMENTARY PUSHBUTTON SWITCHES



CONTACT MATERIALS



- A Silver
- CD Brass, gold plated

Special contact, lower rating : see X601 under "Special options".

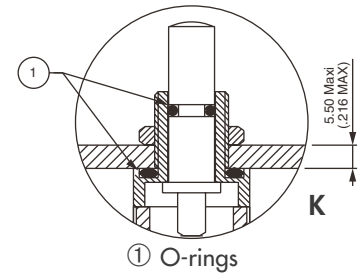
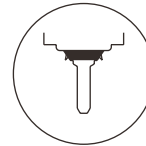
D

SEALING



- Blank No sealing
- B Epoxy sealed terminals
- K Front panel sealing by two O-rings. Protects the switch against water and dust. Panel seal withstands 0,1 bar pressure and remains tight even when switch is operated.
- KB Combined sealings

Sealing boots : see section N.



SPECIAL OPTIONS



- X601 **Silver plated brass contacts**
Current/voltage rating for an electrical life of 20.000 cycles :
0,2A 250VAC - 0,4A 125VAC - 0,5A 30VDC.
Minimum quantity : 5.000 pieces per model and shipment.

- F **Tin dipped terminals**
For PC terminal models with gold plated contacts only.
Order with option B (epoxy sealing).

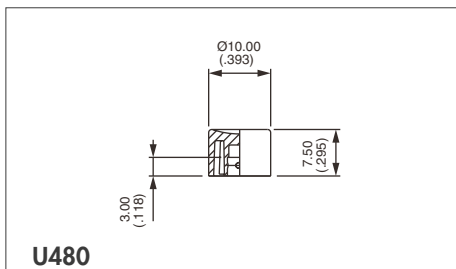
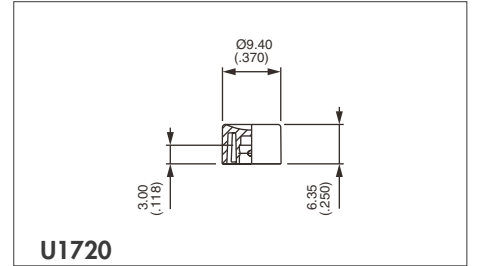
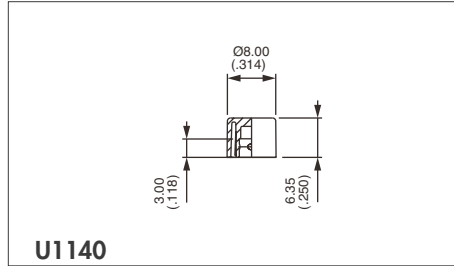
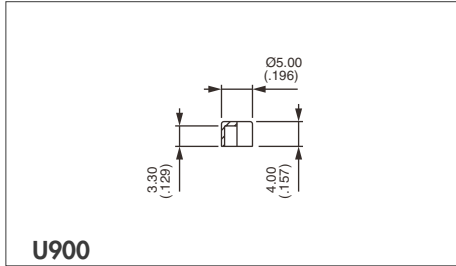
9000 SERIES

MOMENTARY PUSHBUTTON SWITCHES

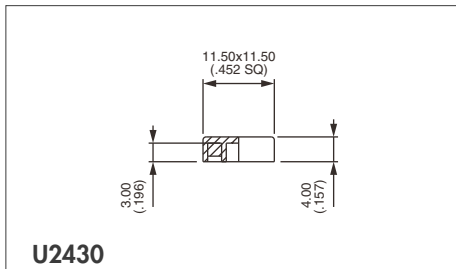
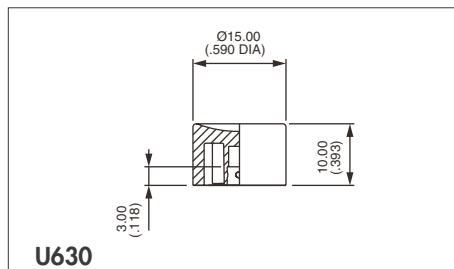
OPTIONS



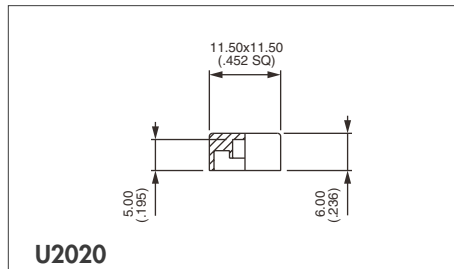
CAPS



Standard



Square

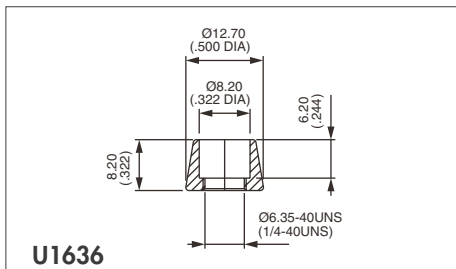


Square

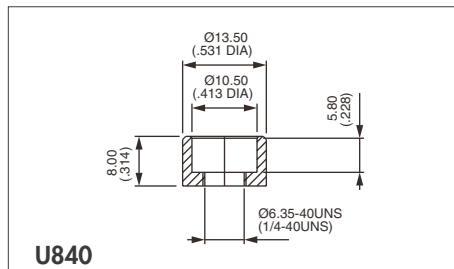
Cap colours	
Replace last "0" by number	
1	blue
2	black
3	green
4	grey
5	yellow
6	red
7	ivory
7/1	white
9	orange

DRESS NUTS

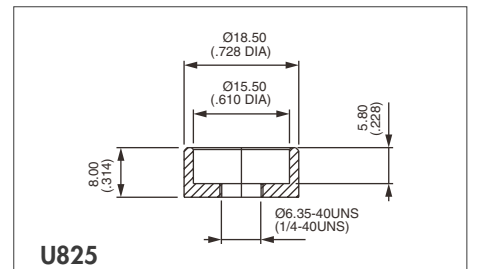
Chrome plated



For cap U1140



For cap U480



For cap U630

Dress nuts are to be ordered separately.

9000 SERIES

ALTERNATE ACTION OR MOMENTARY PUSHBUTTON SWITCHES

Specifications

ELECTRICAL SPECIFICATIONS

- Max. current/voltage rating with resistive load and electrical life :
 - silver contacts (A) : 0,5A 250VAC - 1A 28VDC - 250.000 cycles
 - 1,5A 250VAC - 3A 28VDC - 10.000 cycles
 - gold plated contacts (CD) : 0,4VA 20V max. AC or DC
- Initial contact resistance : 10 mΩ max. at 0,1A 3VDC
- Insulation resistance : 10.000 MΩ min.
- Dielectric strength :
 - 1.000 Vrms 50 Hz min.

MATERIALS

- Case : diallyphthalate
- Actuator : nylon
black for series 9630M
white for series 9631
- Bushing : brass, nickel plated
- Contacts :
 - A** : silver
 - CD** : brass, gold plated
- Terminal seal : epoxy

GENERAL SPECIFICATIONS

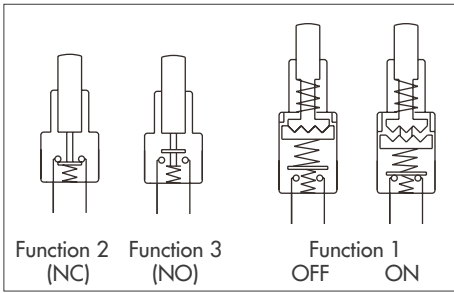
- Operating temperature : -30°C to +85°C
- Travels : see table below.

MODELS	9631	9633M	9632M
Total travel	3,48 (.137)	2,79 (.110)	1,40 (.055)
Pre-travel	0,66 (.026)	-	0,51 (.020)
Over travel	2,69 (.106)	0,51 (.020)	-

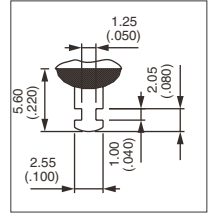
9000 SERIES

ALTERNATE ACTION OR MOMENTARY PUSHBUTTON SWITCHES

Threaded bushing



- Single pole
- Solder lug terminals
- Epoxy sealed terminals



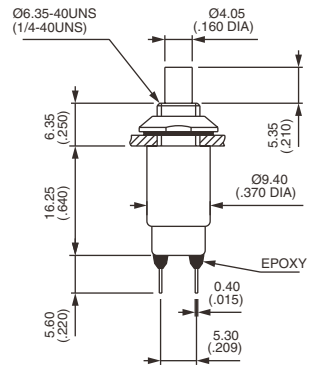
D

Alternate action - tactile feedback



Gold plated contacts
9631CDB ON - OFF

Silver contacts
9631AB ON - OFF



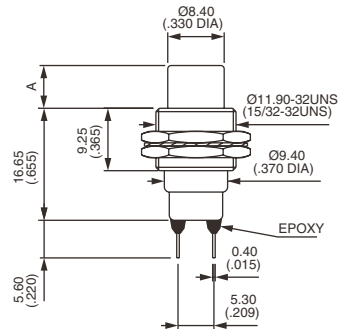
Standard hardware : 1 conic nut and 1 lockwasher

Bushing Ø 11,9 (15/32) - front or rear mounting - NO or NC



9633MCDB Normally open

9632MCDB Normally closed



MODEL	A
9633M	6.35 (.250)
9632M	5.70 (.225)

Standard hardware : 2 hex nuts 14 mm (.551) across flats and 1 lockwasher

Caps available on request.

Mouser Electronics

Authorized Distributor

Click to View Pricing, Inventory, Delivery & Lifecycle Information:

[Apem:](#)

[9633NCDB](#) [9633ADX1146](#) [9633AX1146](#) [9633NAB](#) [9635AB](#)