



88226011-6 s 12 mm



Relay output

- ✓ Mono-voltage
- ✓ 1 timed changeover and 1 instantaneous contact
- ✓ Elapsed time can be saved mechanically in the event of a break in supply
- ✓ Progress of cycle displayed
- ✓ Housing 48 x 48 mm
- ✓ Connection by screw-terminal base or 8-pin base

Precision limit error

Repetition accuracy	± 1.5% (± 4%/6 s)
Selection precision	See "timing ranges" table for scale graduation
Reset time	0.20 s

Timed two-pole

Instantaneous single pole	1
Thermal rating	6,3 A
Rating (cos φ = 0.41) 10 ⁴ operations	5 A - 230 V

Absorbed power-motor

Voltage variation at maximum temperature of 55 °C according to IEC 255 100	24 V +10% - 42 V -15% 48 V +10% - 110 V -20% 127 V 0% - 220 V -20% 240 V 0%
--	--

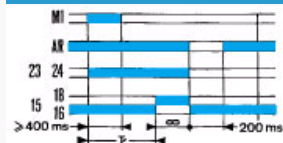
Operator factor	100%
Temperature limits use (°C)	-10→+55
Temperature limits stored (°C)	-20→70
Environmental protection Tropicalised to IEC 68-2-10	✓
Vibration withstand on 3 axes (Veritas standard)	4 G - 55 Hz
Dielectric test voltage according to IEC 255 5 or VDE 0435	1000 V - Un ≤ 60 V 2000 V - Un > 60 V
Insulation according to standard VDE 0110 group C	380 V AC - 440 V DC
Protection Housing	IP 40
Degree of terminal protection	IP 10
Conformity to standards NFC 45250 - VDE 0110 - 0435 - 0660 or ICE 529	✓
Connection: Screw/saddle	✓
Terminal capacity Single-wire 1 or 2 leads Multi-wire	0,75 - 2,5 mm ²
Terminal capacity Multi-wire 1 or 2 leads	0,5 - 1 mm ²
Mounting: Base mounting on 8-pin socket	✓
Weight (g)	185

Curves : Function 2



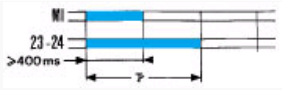
Function

Curves : Function 3



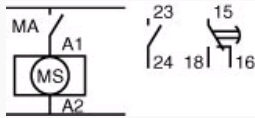
Function

Curves : Function 4

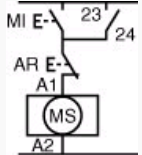


Function

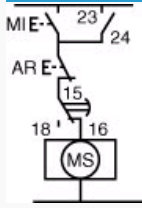
: Function 2



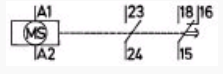
: Function 3



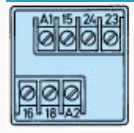
: Function 4



: Internal layout 88 226 0

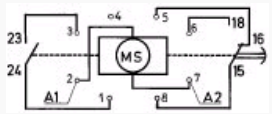


: Terminal identification 88 226 0

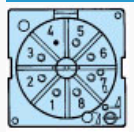


N°	Legend
A1-A2	Supply
15-16-18	Timed contact
23-24	Instantaneous contact

: Internal layout 88 226 5



: Terminal identification 88 226 5



N° 2-3	Legend
2-7	Supply
8-5-6	Timed contact
3-1	Instantaneous contact