



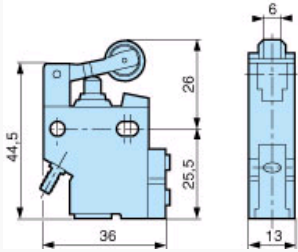
81921902-Lever with roller bearing



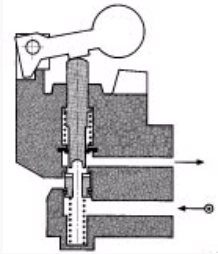
Symbol NO

Symbol NC	
Operating pressure (bar)	0,1—8
Orifice diameter mm	2,7
Flow at 6 bars NI/min	200
Actuation force at 6 bars N	18
Circuit function: NF	✓
Circuit function: NO	✓
Operating temperature (°C)	-5 +50
Mechanical life (operations)	≥10 ⁷
Weight (g)	100

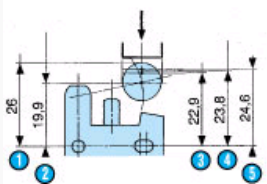
Dimension Diagram : 81 921 717 - 81 921 71981 921 901 - 81 921 90281 921 911 - 81 921 912



: NO

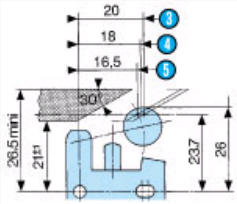


: With lever



N°	Legend
1	PR: Rest position
2	PFC: End of travel position
3	PA: Operating position (max output kV)
4	PO: Mid-position closed (no exhaust, no outlet)
5	PRT: Release position (max exhaust kV)

: With lever

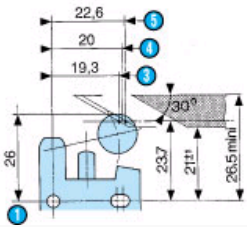


Horizontal actuating 30° cam (other angles of attack are also possible, 45° even 90°)

N° Legend

3	PA: Operating position (max output kV)
4	PO: Mid-position closed (no exhaust, no outlet)
5	PRT: Release position (max exhaust kV)

: With lever



Horizontal actuating 30° cam (other angles of attack are also possible, 45° even 90°)

N° Legend

1	PR: Rest position
3	PA: Operating position (max output kV)
4	PO: Mid-position closed (no exhaust, no outlet)
5	PRT: Release position (max exhaust kV)