



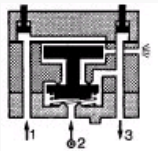
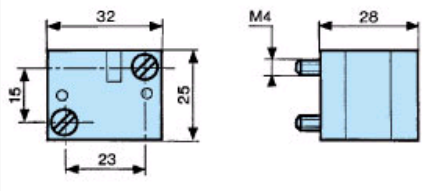
81504025-NO inhibition



Symbol

Push-in connection for semi-rigid tubing (NFE 49100) Male/Female/Female	-
Push-in connection for semi-rigid tubing (NFE 49100) Female/Female/Female	-
Connection - Sub-base	✓
Colour	Light grey
Operating pressure (bar)	2 →8
Orifice diameter mm	2,7
Flow at 6 bars NI/min	170
Pressure indicator	✓
Switching time (ms)	<4
Operating temperature (°C)	-5 +50
Mechanical life (operations)	>10 ⁷
Weight (g)	30

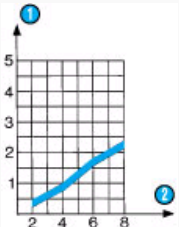
Dimension Diagram :



N°

Legend

Curves :



N°

Legend

1

